



SARACEN
HORSE FEEDS

CATALOGUE



YOUR COMPLETE VETERINARY SUPPLY AND SUPPORT SOLUTION

VETERINARY SUPPLIERS



YOUR COMPLETE VETERINARY SUPPLY & SUPPORT SOLUTION

Eurovets, established in 2001 has become the Middle East's foremost supplier of some of the world's best known veterinary products to veterinary clinics throughout the UAE.

We represent leading multi-national brands in nutrition, veterinary equipment, medicines and consumables for companion, -equine and production animals.

In addition to the traditional wholesaling, Eurovets provides warehousing, distribution, marketing and sales resources in order to support the product in the region. We also offer a host of value-added services such as maintenance and support for all equipment supplied; service-based offerings such as Spectrum allergy testing; even end-to-end IT solutions for clinics.

Eurovets supports Continued Professional Development, imparting knowledge of the latest developments in the field to veterinary professionals through high-powered seminars.

We pride ourselves on our professional approach and offer vet and equine specialized product advice where required. In conclusion our mission is to not only deliver excellent products but to be committed to deliver exceptional customer service to all veterinary clinics, stables and pet retailers in the region.

Eurovets YOUR headquarters for veterinary supply and support and a proud distributor of Saracen Horse Feed products.

SARACEN
HORSE FEEDS



Welcome to Saracen Horse Feeds, originally the specialist horse feed division of the Lillico Group, which is an independent, family owned business with more than 150 years of experience in manufacturing animal feeds. Our modern manufacturing capabilities and innovative, research-led formulations keep us at the forefront of modern feed manufacture.

We are dedicated to producing nutritionally sound, innovative rations and providing our customers with an accessible and personal service. We set ourselves the highest of standards in quality control, and annual quality audits determine our continued compliance to the UFAS (Universal Feed Assurance Scheme) BETA NOPS Code of Practice and FEMAS (Feed Materials Assurance Scheme).

We are the exclusive Kentucky Equine Research (KER) Team Member in the UK. KER is the most prolific independent equine research centre in the world, entirely committed to the advancement of breeding and athletic performance through nutrition.

From its headquarters in Central Kentucky, KER conducts extensive research, and each research trial is designed to improve the health and well-being of horses by targeting specific problems, and finding nutritional solutions. By working so closely with KER in this way, we share those aims and objectives, and because of our close links we can make these resources available in the UK in both the recommendations we make, and in the way our feed is formulated.



INDEX

| | |
|--------------------------------|-----|
| Enduro-100 | 4-5 |
| Re-Leve | 6 |
| Show Improver Mix | 7 |
| SCM Maintenance Mix | 8 |
| Super Fibre Mix | 9 |
| Stud Mix | 10 |
| Speed Mix | 11 |
| Special Customer Mix | 12 |
| Shape-up Mix | 13 |
| Super Shine Plus | 15 |
| Contact | 16 |



Enduro-100

HIGH OIL AND FIBRE MIX FOR CONTROLLED PERFORMANCE

SUITABLE FOR

- > Meeting the nutritional demands of the equine athlete
- > All competing animals that require optimal stamina
- > The performance horse that reacts to a high starch diet

DIET DESCRIPTION

A high-oil, energy efficient mix designed to meet the specific requirements of the modern equine athlete. Alternative energy sources (oil and fermentable fibres) help to reduce the reliance on cereals and provide sustainable slow release energy.





FEATURES & BENEFITS

- > Formulated to draw on “Super-fibre” & oil energy sources for long-lasting energy release & controlled performance
- > High fibre levels to promote gut health & aid gut mobility during competition
- > “Super-fibre” sources encourage water intake and create a water and electrolyte reserve in the gut, helping to combat the effects of dehydration
- > Outstanding coat condition from high oil levels
- > Added Yeast for increased calcium absorption and fibre digestion
- > Fully fortified with vitamins and minerals to optimise resistance to stress and aid efficient muscle function
- > Powerful antioxidant protection

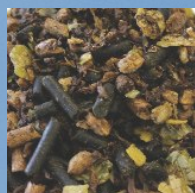
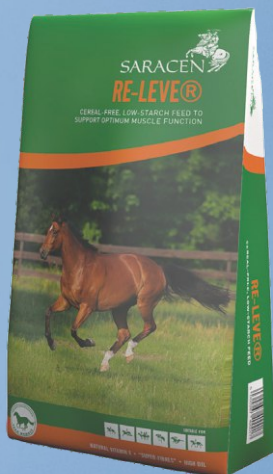
Enduro-100

Ingredients in descending order of inclusion

- > Dried Sugar Beet Pulp
- > Oats
- > Soya Hulls
- > Barley Flakes
- > Lucerne Pellets
- > Maize Flakes
- > Soya Flakes
- > Molasses
- > Soya Oil
- > Vitamins & Minerals
- > Yeast

| Nutrient | per Kg |
|-------------------|--------------|
| Oil | 9.5% |
| Protein | 11.0% |
| Fibre | 11.5% |
| Digestible Energy | 13.6 MJ/kg |
| Starch | 20.0% |
| Vitamin A | 16,800 IU/kg |
| Vitamin D | 3,000 IU/kg |
| Vitamin E | 440 IU/kg |
| Selenium | 0.54 mg/kg |

Re-Leve[®] CEREAL-FREE, LOW SUGAR, LOW STARCH PERFORMANCE RATION



SUITABLE FOR

- > Horses that require a low starch, low sugar feed
- > Horses of a nervous disposition, to maintain a more even and trainable temperament
- > Horses that are prone to tying up
- > Maintaining optimum muscle function

DIET DESCRIPTION

A cereal free ration designed for horses that have a nervous disposition or react adversely to high starch levels. "Super-fibres" and oils provide a safe energy source helping to maintain normal muscle function and a more trainable temperament

FEATURES & BENEFITS

- > Cereal free
- > Low starch, uses a variety of preferred energy sources
- > High levels of "Super-fibres" to support a healthy digestive system
- > Optimum levels of antioxidant levels to support normal muscle function
- > Fully fortified with vitamins and minerals to maintain health and support immune function
- > Quality protein to aid muscle and tissue repair and renewal

Re-Leve[®]

Ingredients in descending order of inclusion

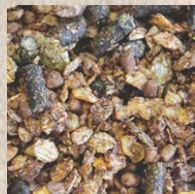
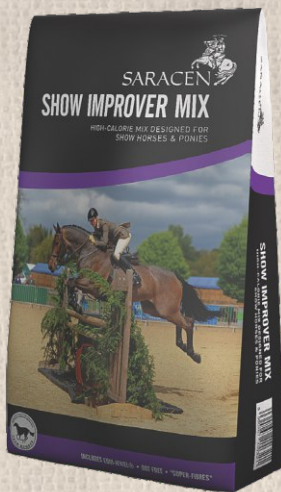
- > Soya Hulls
- > Lucerne Pellets
- > Dried Sugar Beet pulp
- > Pea Flakes
- > Soya Oil
- > Molasses
- > Soya Flakes
- > Dicalcium Phosphate
- > Vitamins & Minerals
- > Limestone
- > Sodium Chloride
- > Mixture of Flavouring Compounds

| Nutrient | per Kg |
|-----------------------------|-----------|
| Protein | 13.00% |
| Oil | 9.0% |
| Fibre | 19.0% |
| Estimated Digestible Energy | 12.9 MJ |
| Starch | 7.8% |
| Sugar | 5.6% |
| Calcium | 1.3% |
| Phosphorous | 0.4% |
| Selenium | 0.50 mg |
| Vitamin A | 11,000 iu |
| Vitamin D3 | 1,100 iu |
| Vitamin E (E-Max Ester) | 360 iu |



Show Improver Mix

CONDITIONING AND WEIGHT GAIN MIX



SUITABLE FOR

- > Optimising weight gain and conditioning thin horses
- > Preparing horses or ponies for the show or sales ring
- > Horses and ponies needing extra coat gloss

DIET DESCRIPTION

An oat free conditioning diet for easy and controlled weight gain that contains EQUI-JEWEL® and "Super-fibres" in the form of alfalfa and soya hulls. The blend of fatty acids from soya oil and EQUI-JEWEL® is effective for skin condition and coat gloss.

FEATURES & BENEFITS

- > The ultimate high calorie conditioning diet for easy & controlled weight gain
- > Stunning coat condition as a result of high-oil levels and from the inclusion of EQUI-JEWEL®
- > Oat free formulation
- > Controlled slow release energy delivered from highly digestible fibres
- > Alfalfa based with micronised soya beans & peas providing quality protein for muscle development

Show Improver Mix

Ingredients in descending order of inclusion

- > Lucerne Pellets
- > Barley Flakes
- > Soya Hulls
- > Barley
- > Maize Flakes
- > Molasses
- > Pea Flakes
- > Soya Flakes
- > Rice Bran with Calcium Carbonate (Equi-Jewel®)
- > Soya Oil
- > Vitamins & Mineral
- > Limestone
- > Mixture of flavouring compounds

| Nutrient | per Kg |
|-------------------|--------------|
| Oil | 7.0% |
| Protein | 12.7% |
| Fibre | 13.0% |
| Digestible Energy | 12.8 MJ/kg |
| Starch | 23.0% |
| Vitamin A | 16,800 IU/kg |
| Vitamin D | 3,000 IU/kg |
| Vitamin E | 240 IU/kg |
| Selenium | 0.55 mg/kg |



SCM Maintenance Mix

SCM Maintenance Mix provides the essential nutrients to maintain the optimum health and condition when horses are at rest during the closed competition season when work demands are low.

SCM Maintenance Mix is high in digestible fibre for gut health, with a low calorie

content and provides quality protein sources for maintaining normal cell tissue and muscle repair.

SCM Maintenance Mix is fortified with vitamins and minerals and is oat free to help reduce behavioural problems when horses are not in work.

SCM Maintenance Mix

Ingredients in descending order of inclusion

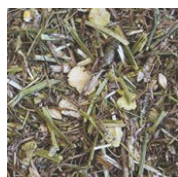
- > Oatfeed
- > Barley Flakes
- > Lucerne Pellets
- > Molasses
- > Maize Flakes
- > Pea Flakes
- > Vitamins & Minerals

| Nutrient | per Kg |
|-------------------|--------------|
| Oil | 2.6% |
| Protein | 8.0% |
| Fibre | 16.5% |
| Digestible Energy | 9.3 MJ/kg |
| Starch | 21.8% |
| Vitamin A | 10,000 IU/kg |
| Vitamin D | 1,000 IU/kg |
| Vitamin E | 50 IU/kg |
| Selenium | mg/kg0.27 |



Super Fibre Mix

CONVALESCENT DIET AND APPETIZER



SUITABLE FOR

- > Replacing bran, sugar beet and chaff
- > Use as an appetiser for shy feeders
- > Horses & ponies on box rest
- > A performance chaff for horses and ponies in medium to hard work

| Nutrient | per Kg |
|-------------------|--------------|
| Oil | 5% |
| Protein | 12% |
| Fibre | 17.5% |
| Digestible Energy | 10.6 MJ/kg |
| Starch | 14.5% |
| Vitamin A | 10,000 IU/kg |
| Vitamin D3 | 1,000 IU/kg |
| Vitamin E | 120 IU/kg |
| Selenium | 0.51 Mg/kg |
| Sugar | 2.9% |

DIET DESCRIPTION

Palatable low sugar/starch formulation, free from whole-oats. Energy is provided by 'Super-fibres', oil and micronized cereals in the ration. Nine different types of herb are included to support and maintain optimum palatability.

FEATURES & BENEFITS

- > Based on long chop, dust free, alfalfa
- > Oat free
- > Highly palatable for fussy feeders
- > Complete diet for horses in light work
- > Performance chaff for horses in hard work
- > Low sugar and starch content

Super Fibre Mix

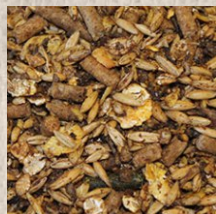
Ingredients in descending order of inclusion

- > Lucerne Chaff
- > Molassed Chaff
- > Oatfeed
- > Barley Flakes
- > Lucerne Pellets
- > Soya Flakes
- > Maize Flakes
- > Pea Flakes
- > Vitamins & Minerals
- > Soya Oil
- > Herbs



Stud Mix

MULTIPURPOSE MIX



DIET DESCRIPTION

Stud Mix is designed as high quality, multipurpose ration for general use on the stud farm. Stud Mix is a straightforward, traditional, balanced compound, and offer a simple and economical way of feeding large groups of breeding stock.

Stud Mix combines a palatable blend of traditional cereal grains on a base of alfalfa pellets, providing a rich and natural source of calcium and highly digestible fibre.

Micronised soya beans provide quality proteins for a good amino acid profile, and bioplex minerals boost micro nutrient absorption rates. Yea-sacc is added to maintain a stable environment in the hindgut to ensure a healthy microbial population for increased fibre digestion.

SUITABLE FOR

- > In-foal mares
- > Lactating mares
- > Working Stallions
- > Growing young stock
- > General use as a multipurpose ration on a stud farm
- > Uncomplicated and efficient feeding with minimal waste

Stud Mix

Ingredients in descending order of inclusion

- | | |
|-----------------------|---------------------|
| > Oats | > Soya Hulls |
| > Barley Flakes | > Lucerne Pellets |
| > Molasses | > Wheatfeed |
| > Pea Flakes | > Soya Flakes |
| > Vitamins & Minerals | > Soya Oil |
| > Dicalcium Phosphate | > Sunflower Extract |
| > Yeast | |

| Nutrient | per Kg |
|-------------------|--------------|
| Oil | 5.0% |
| Protein | 16% |
| Fibre | 11.5% |
| Digestible Energy | 12.9 MJ/kg |
| Starch | 22.0% |
| Calcium | 1.02% |
| Phosphorous | 0.60% |
| Selenium | 0.57 mg/kg |
| Vitamin A | 16,800 IU/kg |
| Vitamin D3 | 3,000 IU/kg |
| Vitamin E | 240 IU/kg |

Speed Mix

A HIGH ENERGY PERFORMANCE MIX



SUITABLE FOR

- > Meeting the demands of the performance horse
- > Horses with limited appetites or fussy feeders
- > All horses or ponies needing extra energy
- > Young competition horses in work

Speed Mix

Ingredients in descending order of inclusion

- > Oats
- > Barley Flakes
- > Molasses
- > Pea Flakes
- > Wheatfeed
- > Soya Oil
- > Sunflower Extract
- > Lucerne Pellets
- > Maize Flakes
- > Soya Flakes
- > Hipro Soya
- > Vitamins & Minerals
- > Soya Hulls

| Nutrient | per Kg |
|-------------------|--------------|
| Oil | 5.5% |
| Protein | 13.5% |
| Fibre | 9.5% |
| Digestible Energy | 12.9 MJ/kg |
| Starch | 27.9% |
| Vitamin A | 16,800 IU/kg |
| Vitamin D3 | 3,000 IU/kg |
| Vitamin E | 240 IU/kg |
| Selenium | 0.57 mg/kg |

DIET DESCRIPTION

Saracen Speed Mix is the number 1 formula of high-energy mixes. Whatever the discipline: racing, eventing, trotting or polo, Saracen Speed Mix will deliver the high-octane fuel needed by the go-faster athletic horse. This high-quality, palatable mix contains elevated levels of energy carefully blended from cereals, fibres and oils in a balance that delivers sensitive and reactive control and handling when you want it. The diet also contains the raised levels of quality protein, vitamins and minerals demanded by the performance horse to be successful in competition whilst remaining fit and healthy.

The well-balanced sources of energy, protein and micronutrients are utilised in such a way as to aid performance, stamina and muscle repair.

The primary factor to consider when feeding the performance horse is that as exercise increases there is a need to increase the amount of energy fed.

FEATURES & BENEFITS

- > High Energy Mix
- > Complex carbohydrates for replacement of glycogen during work
- > Additional energy sourced from Super Fibres for controlled energy release
- > Premium quality vegetable protein sources to encourage optimal muscle and tissue maintenance and repair
- > Chelated minerals included which will help optimise natural resistance to stress and aid efficient muscle function
- > Fully fortified with a totally unique mineral addition from Kentucky Equine Research
- > Fixed formulation providing constant nutritional quality and consistency

Special Custom Mix

BESPOKE MIX

DESCRIPTION

Saracen horse feeds are able to offer bespoke rations and feed management systems that compliment a stable's supplementation programme and training regime. This service is tailored more towards the larger stables where 100 plus horses are in training.

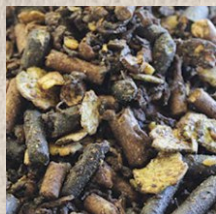
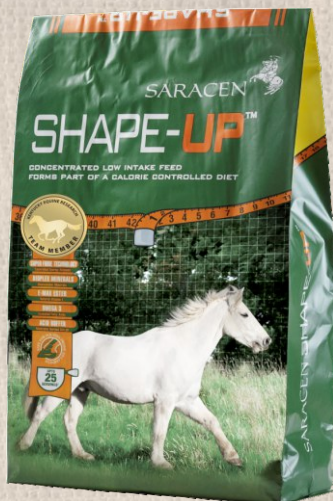
CONSIDERATIONS

- > Only available to bulk order clients.
- > Full containers or 300-400 bags must be ordered.
- > Subject to mill scheduling and manufacture time.
- > Tightly managed order patterns to ensure availability on time and correct quantities for individual clients.
- > Tailor made specification rations, with additional ingredients and additives which are not part of the standard Enduro 100 formulation.



Shape-up Mix

LOW CALORIE FEED BALANCER



SUITABLE FOR

- > Horses and ponies that are overweight or predisposed to laminitis
- > "Good-doers" and native breeds
- > Horses and ponies requiring a specialist feed to help maintain a healthy metabolism
- > Any horse or pony that requires a low calorie feed balancer
- > The high palatability of this ration also makes it suitable for fussy feeders or those that are sick, convalescing or on box rest

DIET DESCRIPTION

SHAPE-UP™ is a low starch, high fibre mix designed to provide a balanced diet at low intake levels, and to help maintain a normal, healthy metabolism. It can be used as a calorie controlled ration for those prone to laminitis, Equine Metabolic Syndrome or Cushing's in order to meet micro nutrient requirements without excess sugar, calories and starch intake.

The ration is based on Saracen Horse Feeds' "Super-fibre" technology, meaning that energy is derived from slow-release, fibre sources that produce a minimal glycemic response post feeding. The high fibre content of SHAPE-UP™ and the inclusion of an original neutralizing ingredient also help to maintain a healthy digestive system for those good-doers that may be on a restricted forage ration.

FEATURES & BENEFITS

- > Maintains a healthy digestive environment in horses and ponies on restricted rations
- > Contains a source of Omega-3 fatty acids
- > Includes a mycotoxin binder for "mopping up" free radicals and supporting optimum health and immune function
- > Supports hoof quality and growth
- > Includes a source of magnesium for normal cell sensitivity
- > Contains added cinnamon for palatability and antioxidant support

Shape-Up Mix

Ingredients in descending order of inclusion

- | | |
|-----------------------|-------------------------|
| > Oatfeed | > Dried Sugar Beet Pulp |
| > Soya Hulls | > Molasses |
| > Micronised Soya | > Micronised Peas |
| > Soya Oil | > Linseed |
| > Acid Neutralizer | > Dicalcium Phosphate |
| > Vitamins & Minerals | > Cinnamon |
| > Mycotoxin Binder | |

| Nutrient | per Kg |
|-------------------|--------------|
| Oil | 6.5% |
| Protein | 10.0% |
| Fibre | 16.0% |
| Digestible Energy | 11.5 MJ/kg |
| Starch | 8.3% |
| Vitamin A | 22,000 IU/kg |
| Vitamin D3 | 4,100 IU/kg |
| Vitamin E | 600 IU/kg |
| Selenium | 1.0 mg/kg |
| Sugar | 8.9% |



Super Shine Plus



SOYA OIL

SUITABLE FOR

- > Use as a non-heating energy source
- > To optimise feed palatability

DIET DESCRIPTION

Saracen Super Shine Plus is a rich source of linoleic acid which has been refined to the highest standard, making it seventeen times more concentrated than that found in fish oil and three times more concentrated than in linseed oil.

FEATURES & BENEFITS

- > Optimises healthy muscle, skin and coat condition
- > Aids the absorption of fat-soluble vitamins, such as A, D3, E and K
- > Acts as an efficient, non-heating energy source
- > Helps to maintain normal metabolic function and supports optimum recovery rates after hard work
- > Supports normal shedding of winter coat

Super Shine Plus

Ingredients in descending order of inclusion

- > 100% Refined soya oil plus mint flavouring

Nutrient

Per Kg

Oil

100.0%

Digestible Energy

33.0 MJ/kg

FOR FURTHER INFORMATION, PLEASE CONTACT:

Dr Jawad Al Afif

Mobile: +971 55 991 3522, Email: jawad@eurovetsworld.com

or

Basit Mehmood

Mobile: +971 55 911 1304, Email: basit@eurovetsworld.com

IN QATAR PLEASE CONTACT:

Dr Rawad Dakkak

Mobile: +974 6607 8958, Email: rawad@eurovetsworld.com

FEED THE DIFFERENCE

ALL THE BEST BRANDS

Eurovets is dedicated to providing your clinic with all your veterinary needs. We offer a comprehensive product range at highly competitive prices for small and large animal practices, stables and wholesale outlets. This include biological, diagnostics, nutritionals, medicines, equipment, consumables and more.

Contact us today

Eurovets Veterinary Suppliers (Dubai)

Tel: +971 4 434 2436

E-mail: orders@eurovetsworld.com

Address: Warehouse A6, Dubai Science Park, Dubailand,
Al Barsha South, Dubai, United Arab Emirates

Eurovets Animal Health

C-ring Road (opposite Qatar Navigation), Zone 42,
Street 230, Building No. 153, Office No. 9, Qatar
P.O. Box 24374, Qatar
Tel +974 6607 8958



www.eurovetsworld.com





SARACEN



SARACEN



SARACEN



SARACEN



SARACEN



SARACEN