



R420
Veterinary Electric Turbo Ventilator

RWD



Veterinary Ventilation Innovation

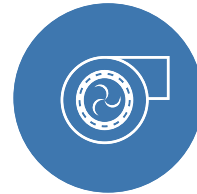
Simplify the complexity
and breathe freely



From Animal Needs, for Animal Use

R420

Veterinary Electric Turbo Ventilator



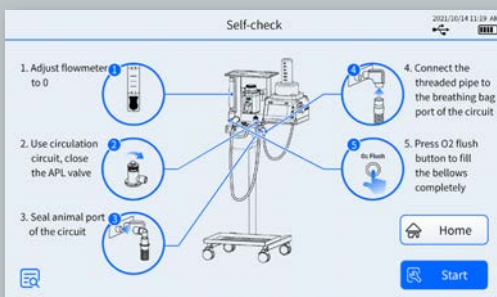
Turbo Drive

Electronically driven by a high-performance turbine, no more driven gas

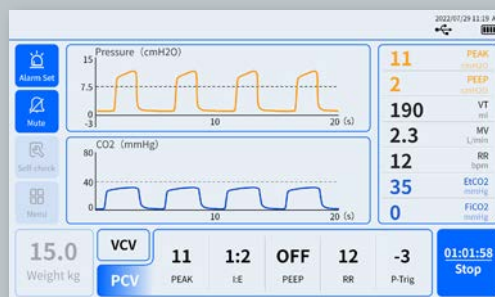


Multiple alarms

Multiple alarms and clear handling prompts ensure the safety of mechanical ventilation



Self-check interface



Smart preset



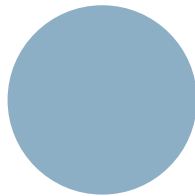
Two size bellows

With high-performance turbine drive, R420 ventilator no longer needs drive gas! As a mechanical ventilation device tailored for animals, this is a technological innovation. It is a good solution to the traditional ventilator driven gas consumption problem. In addition, its easy-to-use working modes and comprehensive monitoring of animal ventilation state ensure safe ventilation.



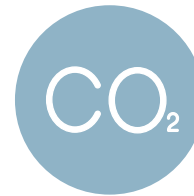
Precise ventilation

Minimum tidal volume down to 4 mL



Smart preset

Once inputting animal weight, smart respiratory parameters can be called up



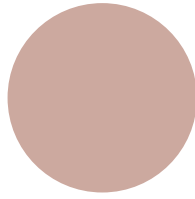
Guard "breathing" safety

Accurate and continuous monitoring of respiratory status, such as airway pressure - time chart, minute volume, EtCO₂, and etc.



PEEP function

Help veterinarians solve low SpO₂ problems during surgery



Auto system leak test

Graphical guidance for quick start



Remote control of inspiratory hold

During a CT scan of the chest or abdomen, help the animal to hold the inspiration and complete the CT scan



PEEP function



Remote control of inspiratory hold(optional)



Sidestream EtCO₂ monitoring(optional)

Specification

Item	Specification
Working principle	Turbo drive
Size	291mm×336mm×462mm
Net weight	8.4kg
Animal weight range	0.4 kg-150 kg
Respiratory rate	2~60bpm
I:E	1:1.0-1:4.0
Tidal volume	4-1500 ml
Peak inspiratory pressure	5-50 cmH ₂ O
PEEP	3~20 cmH ₂ O, OFF
Trig pressure	PEEP OFF: -10~ -1cmH ₂ O, OFF; PEEP ON: -10~ -4cmH ₂ O, OFF
Touch screen	7inch, 1024*600px
EtCO ₂ measuring range	Measuring range :0mmHg – 114 mmHg
EtCO ₂ sample flow rate	75ml/min



Configuration

Function \ Model	R420	R420-Plus	R420-Pro
Smart preset	●	●	●
VCV ventilation mode	●	●	●
PCV ventilation mode	●	●	●
PEEP	●	●	●
Sidestream EtCO ₂ monitoring	○	●	●
INSP. HOLD remote control	○	○	●

Included● Excluded○

RWD, proudly distributed by EUROVETS



Copyright © 2024
Eurovets Veterinary Medicines LLC
All rights reserved

CONTACT US:

Tel: +971 4 434 2436

Whatsapp: +971 58 170 1736

E-mail: info@eurovetsworld.com

Address: Warehouse A6, Dubai Science Park, Dubailand,
Al Barsha South, Dubai, United Arab Emirates

