

mindray

healthcare within reach

CATALOGUE



YOUR COMPLETE VETERINARY SUPPLY AND SUPPORT SOLUTION



VETERINARY SUPPLIERS

Z5Vet

Portable Color Doppler Diagnostic Ultrasound System

Your unique requirements of high image quality, versatility, mobility and affordability can now be met with the new portable Color Doppler system Z5Vet. With the most unique combination of high performance and low cost, the Z5Vet is the result of Mindray's continuous efforts towards making healthcare more accessible to humanity. Be it an abdominal scan indoors, or an emergency requirement outdoors, the Z5Vet can be used limitlessly for various applications. For first time ever, conventional cart-based Color Doppler capabilities have now been made available to you in a smart highly efficient portable design, making it possible for you to reach beyond boundaries.



E006647



Full-featured Imaging Technologies

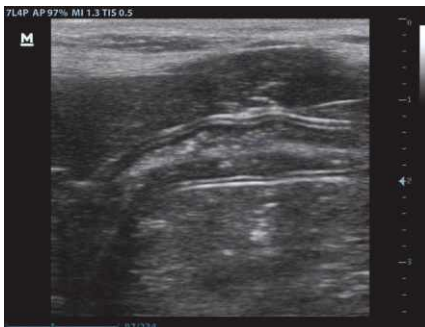
With full-featured imaging technologies which includes iBeam™, iClear™, Phase Shift THI, etc., Z5Vet will bring you more diagnostic confidence in improving patient care across a range of clinical applications.

Comprehensive Clinical Applications

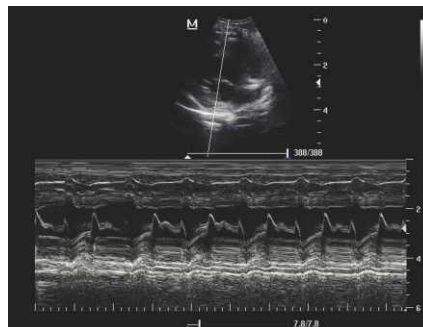
To improve your flexibility in different clinical applications, Z5Vet provides new designed probes which is lightweight and durable, ready to perform in any clinical situation.

Prominent Ergonomics

To carry forward the classical ergonomic design of Mindray's Ultrasound, Z5Vet features smart new shape, compact size and lightweight for enhanced mobility that allow Z5Vet to perform anywhere, any time.



Canine Intestine



Heart-Long Axis-Canine



PW in Liver-Canine



Z6Vet

Portable Color Doppler Diagnostic Ultrasound System

The Z6Vet portable Color Doppler ultrasound system is a well-balanced choice for those who require both the value of features from traditional color Doppler ultrasound system and the accessibility without any budget constraint. Inherited from our remarkable design and success in the field of developing ultrasound, the Z6Vet system will offer you amazing image quality and functionality with refreshing experience : we've done better to help you achieve more.



E006457



Full-featured Imaging Technologies

With full-featured imaging technologies which includes iBeam™, iClear™, Phase Shift THI, etc., Z6Vet will bring you more diagnostic confidence in improving patient care across a range of clinical applications

Comprehensive Clinical Applications

To improve your flexibility in different clinical applications, Z6Vet provides new designed probes which is lightweight and durable, ready to perform in any clinical situation.

Prominent Ergonomics

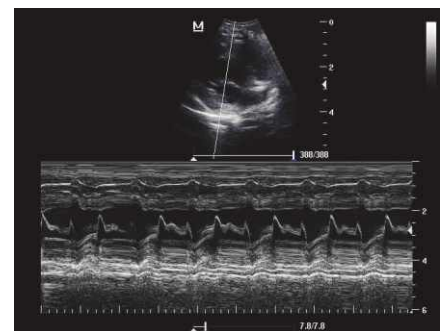
To carry forward the classical ergonomic design of Mindray's Ultrasound, Z6Vet features smart new shape, compact size and lightweight for enhanced mobility that allow Z6Vet to perform anywhere, any time.



Intestinal Tract-Canine



MSK-Tendon-Canine



Heart-Long Axis-Canine



M7Vet Hand-carried Color Doppler Diagnostic Ultrasound System

E007582

Gorgeous Design

- 15" medical-use LCD monitor
- 6.5Kg with two Lithium-ion batteries supporting long time continuous scanning
- 6 colors of trackball for user's preference
- Robust Magnesium alloy cover with anti-shock and anti-splash ability guarantees diagnostic exams both in hospitals and outdoor harsh environment



DP-20Vet

Digital Ultrasonic Diagnostic Imaging System

E007411



Ergonomic Mobile Design with Full Screen

- 12.1 inch high definition LED with Full Screen design
- 30 degree tilting angle adjustable for better viewing
- User friendly control panel with backlit for working in clinics
- Light and compact design offering extreme portability

Accelerated Workow

- iStorage for instant images and reports transfer to PC
- User-dened keys for programmable personalized operations
- 1.5h uninterrupted scanning with rechargeable battery
- 500GB hard disk for large patient data storage

Expand Your Clinical Versatility

- PW Doppler and Auto Trace reveal details of blood ow for more comprehensive diagnosis
- Tissue Harmonic Imaging (THI) for enhanced contrast resolution
- A wide range of broadband transducers with up to 6 frequencies, including linear endorectal and micro-convex transducers with anti-decay surface and longer cable dedicated for animals



Feline bladder



Feline spleen

DP-50Vet

Digital Ultrasonic Diagnostic Imaging System

Exceptional Ergonomic Design

- Sleek, streamlined, compact shape
- Enhanced mobility with rechargeable battery
- High resolution 15" LCD with tilt functionality for better viewing

Diagnostic Confidence with Advanced Imaging Technologies

- iBeam™: Spatial Compounding Imaging
- iClear™: Speckle Suppression
- Phase Shift Harmonic Imaging

Intelligent Workflow

- iTouch™: Auto Optimization
- iStation™: Patient Information Management System
- Clip board function
- Onboard reporting



E007623



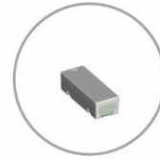
15" LCD monitor with tilting, allows easy viewing



Backlit keyboard



Abundant transducer family



Rechargeable battery



Dual Transducer Connectors



ALL THE BEST BRANDS

Eurovets is dedicated to providing your clinic with all your veterinary needs. We offer a comprehensive premium product range at highly competitive prices from small to large animal practices. It includes items such as diagnostics, nutritionals, medicines, feed, equipment, consumables and more.

Eurovets YOUR complete veterinary Supply and Support SOLUTION.



Copyright © 2019

Eurovets Veterinary Medicines LLC

All right reserved

Contact us today

Eurovets Veterinary Suppliers

Tel: +971 4 434 2436 OR Technical Support Team contact:
+971 56 880 9212

E-mail: orders@eurovetworld.com

Address: Warehouse A6, Dubai Science Park, Dubailand,
Al Barsha South, Dubai, United Arab Emirates

eurovetworld.com

