



mindray
animal care
CATALOGUE

YOUR COMPLETE VETERINARY SUPPLY AND SUPPORT SOLUTION





ABOUT EUROVETS

EUROVETS IS YOUR COMPLETE VETERINARY SUPPLY & SUPPORT SOLUTION

Eurovets, established in 2001 has become the Middle East's foremost supplier of some of the world's best known veterinary products to veterinary clinics throughout the UAE.

We represent leading multi-national brands in nutrition, veterinary equipment, medicines and consumables for companion, equine and production animals. In addition to the traditional wholesaling, Eurovets provides warehousing, distribution, marketing and sales resources in order to support the product in the region.

We also offer a host of value-added services such as maintenance and support for all equipment supplied; service-based offerings such as allergy testing; even end-to-end IT solutions for clinics.

Eurovets supports Continued Professional Development, imparting knowledge of the latest developments in the field to veterinary professionals through high-powered seminars.

We pride ourselves on our professional approach and offer vet specialized product advice where required.

In conclusion our mission is to not only deliver excellent products but to be committed to deliver exceptional customer service to all veterinary clinics and pet retailers in the region.

Eurovets YOUR headquarters for veterinary supply and support and a proud distributor of the IDEXX brand.



Powered by the leading R&D capabilities, Mindray rolls out the vet solution which satisfies all sorts of demands of veterinarians and takes care of all kinds of animals. The brand-new solution provides a broad portfolio of products in the diagnosis, treatment and monitoring of animals. Dedicated to bringing better animal care, Mindray helps to improve confidence and outcomes for animal care givers and for therapy innovators around the world.



INDEX

PAGE

ULTRASOUND SYSTEM

DP-10 VET	4 - 5
DP-30 VET	6 - 7
DP-50 VET	8 - 9
DC-N3 VET.....	10 - 13
M6 VET	14 - 16
M9 VET	17 - 19
Z60 VET	20 - 21
VETUS 5	22 - 25
VETUS 5 Exp	26 - 32
VETUS 7	33 - 39
VETUS 8	40 - 46
VETUS E7	47 - 52

ANESTHESIA SYSTEM

VETA 3/5	53 - 61
----------------	---------

VETERINARY MONITORING

uMEC12 VET	62 - 65
------------------	---------

VETERINARY DIGITAL RADIOGRAPHY SYSTEM

VETIX P8	66 - 69
----------------	---------

mindray

DP-10Vet

Digital Ultrasonic Diagnostic Imaging System



DP-10Vet

Digital Ultrasonic Diagnostic Imaging System

Ergonomic Design with Trendy Look

- 12.1 inch high definition LED with Full Screen design
- 30 degree tilting angle adjustable monitor for better viewing
- User friendly control panel with backlit for working in clinics
- Light and compact design offering extreme portability

Good Image Quality for Wide Veterinary Use

- PW Doppler and Auto Trace reveal details of blood flow for more comprehensive diagnosis
- Tissue Harmonic Imaging for enhanced contrast resolution
- iZoom for instant full screen image expansion
- Abroad range of transducers covering abdomen, thoracic, cardiac, tendinous, small parts, urology and reproductive system for animals such as dog, cat, equine, bovine and ovine, etc.

Saving the Scanning Time by Facilitating the Workflow

- iStorage for instant images and reports transfer to PC
- User-defined keys for programmable personalized operations
- 1.5h uninterrupted scanning with rechargeable battery
- 500GB hard disk for large patient data storage



Feline kidney



Canine bladder

mindray
healthcare within reach

DP-30Vet ^{Power}

Digital Ultrasonic Diagnostic Imaging System



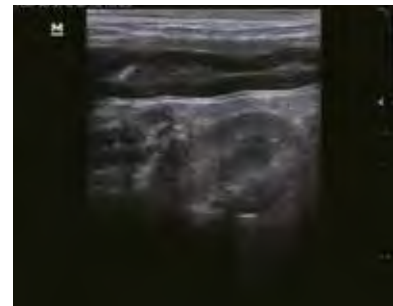
DP-30Vet ^{Power}

Digital Ultrasonic Diagnostic Imaging System

- 12.1 inch high definition LED with Full Screen design assuring easy cleaning
- 30 degree tilting angle adjustable monitor for better viewing
- User friendly control panel with backlit for working in clinics
- Advanced technologies including Power Doppler and PW Doppler help evaluate blood flow in different clinical conditions
- Veterinary exam modes including full measurement, comment and body mark packages
- Specifically designed veterinary transducers with anti-decay surface and longer cable



Feline kidney



Feline dodecadactylon



mindray
healthcare within reach

DP-50 Vet

Digital Ultrasonic Diagnostic Imaging System

The Premium System for Your Choice



DP-50 Vet

With comprehensive configurations and an integrated design, NEW DP-50 Vet is the outcome of Mindray's continuous and determined efforts towards making veterinary healthcare more efficient, effective and accessible for all. The DP-50 Vet, a premium Black & White ultrasound system, offers more than your expectation. With a smart new shape and full screen, enhanced mobility and more convenient operations, this reliable and affordable system will enhance general practices and is well-suited for multiple veterinary clinical needs.

Enhanced Veterinary Diagnostic Confidence

- **Power Doppler:** Identify blood flow under various veterinary clinical settings
- **PW Doppler and Auto Trace:** Reveal details of blood flow for more comprehensive diagnosis
- **Veterinary Applications:** Measurement, Comment, Report and Body mark designed for canines, felines, equines, bovines, ovines and more



Mobile Design for Veterinary Daily Use

- Sleek, streamlined, and compact shape
- 60 degree tilting angle adjustable monitor
- 2 universal transducer connectors
- 500GB hard disk for large patient data storage
- 1.5h scanning with rechargeable battery
- Slim trolley for easy mobility
- Convenient hand-carried bag for easy transportation

Dedicated Veterinary Workflow

- **iTouch™:** Quick image optimization in one touch
- **iZoom™:** Instant full screen image expansion with one button
- **iStorage™:** Directly transfer images and reports to PC via network cable
- **User-defined keys:** programmable personalized operations tailored for veterinarian



Canine Gallbladder



Canine Bladder



DC-N3Vet

Diagnostic Ultrasound System

Redefining the Base



 **mindray**
animal care

DC-N3Vet

Diagnostic Ultrasound System

DC-N3Vet is a fully featured color Doppler system which is designed for veterinarians with faster, more reliable and more accurate diagnostics. With the best in class performance, efficiency and design, you can be assured of an outstanding ultrasound experience. DC-N3Vet is truly a redefinition of the base, providing a perfect choice for your requirements of high image quality, versatility and affordability.

Comprehensive Applications

- B-mode
- Color Doppler Imaging
- Power Doppler Imaging & Directional Power Doppler Imaging
- PW (Pulsed Wave Doppler)
- CW (Continuous Wave Doppler)
- M-mode
- Free Xros M (Three Lines Anatomical M-mode)
- TDI (Tissue Doppler Imaging)
- ECG module

Professional Design for Veterinary Use

- Veterinary information management
- Veterinary body mark
- Veterinary comments
- Veterinary OB table
- Specialized measurement and analysis packages for various animals

Dedicated Workflow

- iPower: Intelligent power solution with built-in battery
- iTouch: One-button image optimization
- Auto IMT
- Auto Doppler trace and calculation
- Full network compatibility

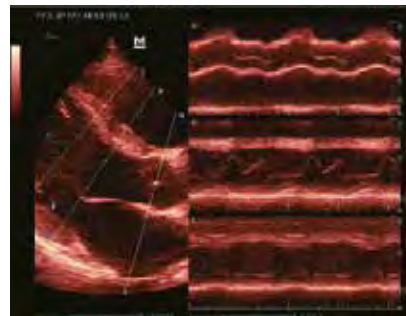




Canine spleen



Canine obstetrics



Canine cardiac FreeXros



Kidney blood flow



Canine kidney



Canine four chamber view

Full Range Transducers

6C2

Micro Convex Transducer

Application: Cardiac, Abdominal, Cephalic, Nerve, Vascular



3C5A

Convex Transducer

Application: Cardiac, Abdominal, Cephalic, Nerve, Vascular



P7-3

Phased Array Transducer

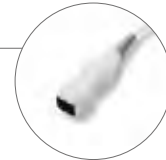
Application: Cardiac, Abdominal, Trans cranial



2P2

Phased Array Transducer

Application: Cardiac, Abdominal, Trans cranial



L12-4

Linear Transducer

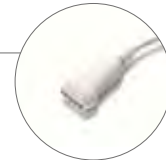
Application: Small parts, Vascular, Musculoskeletal, Abdominal, Cephalic



L14-6N

Linear Transducer

Application: Small parts, Vascular, Musculoskeletal, Abdominal, Cephalic



M6Vet

Hand-carried Ultrasound System

Your daily success for Veterinary



Your daily success for Veterinary

For modern pet clinics, what are the biggest challenges you need to face everyday? How do you expand clinical capabilities to offer new service? How do you maximize the utilization of your ultrasound scanner to increase the throughput? How do you satisfy the needs of patients and referrers to differentiate your clinics from others?

If the problems above are what you concern about, then Mindray's hand-carried ultrasound system M6Vet is the answer. With 3T Transducer Technology™, comprehensive vet share service and reproduction package, and one push button iTouch™ image optimization technology, M6Vet enables your daily success for veterinary routine exams.

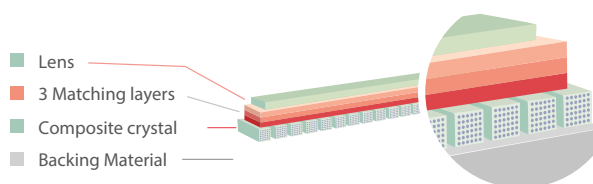
3T Transducer Technology™

Mindray's unique transducer technology to increase image bandwidth and transmission efficiency:

Triple-matching layer design

Total-cut design

Thermal-control design



3T Transducer Technology™



C11-3s, micro-convex array

Small animal's abdomen, cardiac



7L4s, linear array

Big animal's tendon, small animal's abdomen, small parts



P7-3s, phase array

Small animal's cardiac



6LE5Vs, linear intrarectal

Big animal intrarectal

Professional Design for Veterinary Use

- Veterinary information management tool for more than 6 types of animals
- Up to 22 veterinary body marks
- Abdomen, cardiac, OB, vascular, small parts and MSK exam modes and analysis packages for different animals
- Veterinary OB table
- User-defined formulas for more applications



EQUINE



BOVINE



OVINE



CANINE



FELINE



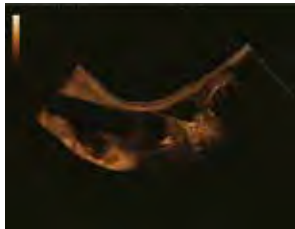
DOLPHIN

Intelligent Workflow

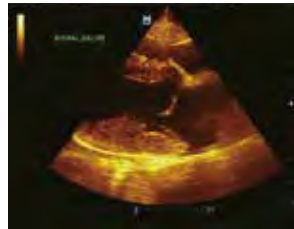
- iTouch™: Intelligent image optimization for B, color and PW mode
- Smart Tracking: Continuously track the color flow and optimize the best color box in real time scanning
- Smart Doppler: Automatic optimize the size and position of color box and doppler gate placement to ensure optimal signal color and spectral doppler sampling

Comprehensive Functionalities

- iScape™: real-time panoramic imaging with velocity indicator, a very useful tool to evaluate the racing horse tendon
- Free Xros™ Imaging: Anatomical M mode, it can support EF measure offline and significantly shorten the exam time
- Advanced cardiac function assessment packages including Free Xros™ CM Imaging: Anatomical Curved M mode and Tissue Doppler Imaging



Turtle-Bladder-iScape



Mitral Valve



Canine Spleen Mass



Turtle-Ovary & Spawn

High capacity battery and data storage

- 1TB hard drive
- Up to 90 min scanning time with battery
- 5.5 kg light weighted design with travelling case for outdoor diagnosis
- Raw data enables advanced post-processing when the exams completed

Versatile multi-functional trolley

- External LCD monitor providing more perspective
- Up to 3 transducer connectors
- Height adjustable platform
- External DVD R/W storage
- Compact design enables higher flexibility



M9Vet

Premium Hand-Carried Ultrasound System

Premium Capability, Easy Mobility



Premium and Professional for Veterinary

Mindray's premium hand-carried ultrasound system M9Vet is an ideal system for performing professional Veterinary examinations.

Equipped with Mindray's new generation ultrasound platform, mQuadro, and 3T transducer technology, unique Echo Boost and exclusive HDR Flow technology, M9Vet offers the best performance for all veterinary application, especially for echocardiography.

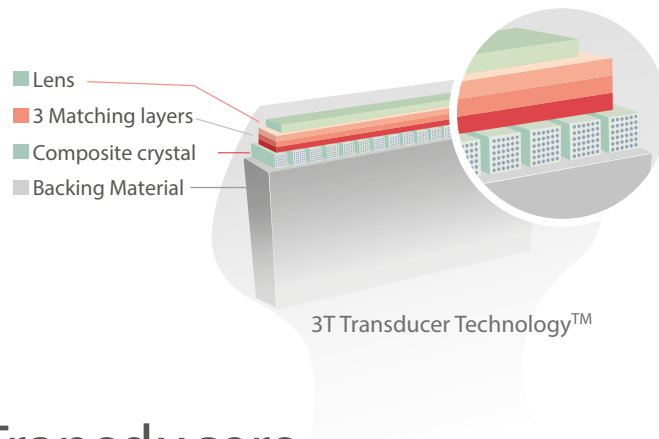
mQuadro platform

Mindray's new generation ultrasound platform, mQuadro, consists of industry leading hardware architecture, advanced transmission and reception, powerful parallel processing and intelligent algorithms allow for higher image resolution and color sensitivity, and greatly enhancing diagnostic experience.

3T Transducer Technology™

Mindray's unique transducer technology to increase acoustic bandwidth and transmission efficiency:

- Triple-matching layer design
- Total-cut design
- Thermal-control design



High Performance Transducers



P10-4s, phased array



P7-3s, phased array



SP5-1s, single crystal phased array



C11-3s, micro-convex array



L12-4s, Linear array

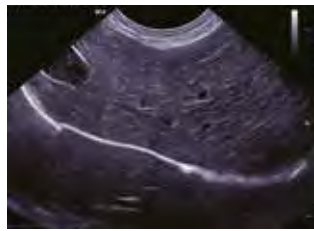


6LE5Vs, intrarectal linear array

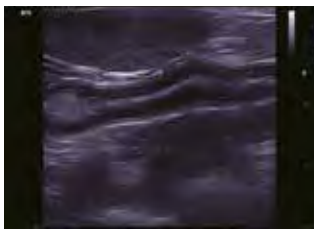
Professional Design for Veterinary Use



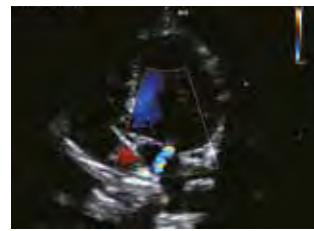
Cat Ascites



Puppy Hepatic & Gallbladder



Puppy Bowel



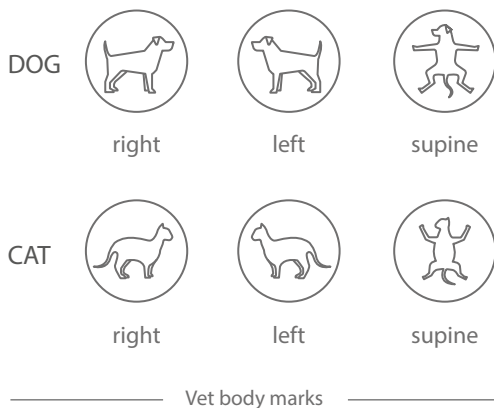
Puppy Cardiac CFM

Dedicated Vet Software

- Veterinary data information
- Veterinary exam modes
- Veterinary body marks
- Veterinary measurements and reports

Advanced Features

- High standard CW imaging
- TDI and Quantitative Analysis for confident vet cardiology analysis
- Tissue Tracking Quantitative Analysis for advanced myocardial study
- Auto Measurement including Auto PW trace, AutoEF etc.



Innovative Design

Robust Magnesium-alloy Body

- 15.6" LED HD monitor
- Built-in battery providing 90min scanning time
- High capacity SSD hard drive

High Mobility Multi-function Trolley

- Inbuilt quick & easy locking system
- Over 3.5 hours scanning with trolley-mounted battery
- Extended 3 transducer connectors

Z60 Vet

Diagnostic Ultrasound System

Wise Choice for Professionals



Z60 Vet

The Z60 Vet is a powerful and versatile Color Doppler system which provides you the best solution for veterinary ultrasound imaging with excellent performance. Due to the comprehensive configurations, dedicated veterinary workflow and integrated design, you can be assured of an outstanding ultrasound experience in both large and companion animals. Packed with professional innovative technology inside this smart portable system makes Z60 Vet a perfect veterinary ultrasound system with excellent image quality and various advanced features.

Comprehensive Veterinary Applications

- **Veterinary scanning modes:** B, Color, PW, CW, Power, M, Free Xros M
- **Veterinary transducer variety:** Micro-Convex, Linear, Convex, Phased array, Endocavity
- **Veterinary applications:** reproductive organs, abdomen, cardiac, tendinous, small parts and more
- **Veterinary exam packages:** Measurement, Comment, Report and Body mark designed for canines, felines, equines, bovines, ovines and more



Powerful Cardivascular Solutions

- **PW/CW Doppler:** Auto Doppler trace and calculation
- **Color M:** includes Color Flow M mode and Color Tissue M mode
- **Auto IMT:** Automatic measurement for veterinary Intima-Media Thickness
- **Tissue Doppler Imaging:** Full functional (TVI, TEI, TVM, TVD)
- **ECG module** for veterinary cardiology analysis



Dedicated Veterinary Workflow

- **iTouch™:** Quick image optimization in one touch
- **iZoom™:** Instant full screen image expansion with one button
- **User-defined keys:** programmable personalized operations tailored for veterinarian

Ergonomic Mobile Design

- 60 degree tilting angle adjustable monitor
- Integrated design with internal AC power adapter
- 1.5h uninterrupted scanning with rechargeable battery
- 15 inch High Definition monitor with full screen design
- Water-proof protection cover designed for veterinary keyboard
- Backlit control panel designed for veterinary diagnosis in clinics
- Can be packed in a convenient hand-carried bag for easy transportation



Canine Kidney



Canine Intestine



Vetus 5

Veterinary Diagnostic Ultrasound System

Expand your vision

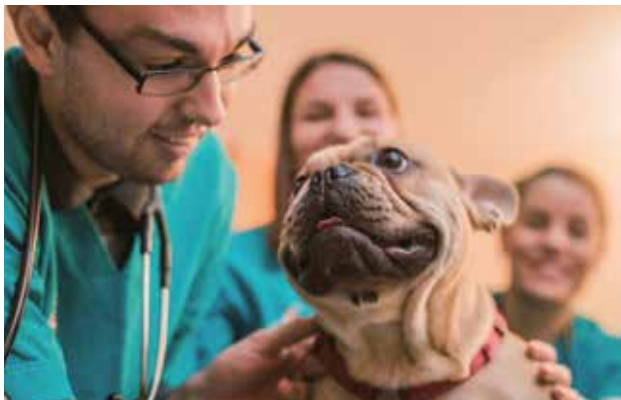


Vetus 5

Vetus 5 offers the cost-effective veterinary ultrasound imaging system with multiple intelligent functions. Configured with Mindray brand new VETUS platform,, making it easily meet the increasingly diversified veterinarian demands.

Dedicated Animal Presets

- Professional ultrasound image presets according to different animals' body characteristics
- Animal species are subdivided to different categories by weight and body size for precise diagnosis
- Veterinary recognized measurement formula presets, easily user-defined modification



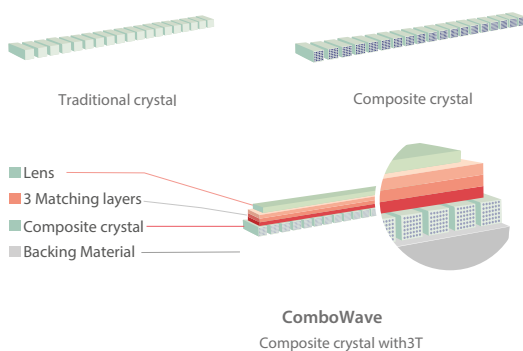
Simple Veterinary Workflow

- Transducers and the corresponding exam modes are displayed in the same interface, select or switch within 1 second
- Recent 4 modes are presented at hand, one-key to switch the frequently-used exam mode
- Super smart touch screen supports powerful multi-touch fast operation



Advanced Ultrasound Technology

ComboWave transducers integrated with Mindray's unique 3T technology, allowing you to experience outstanding performance with extreme image resolution and uniformity in animal abdomen, small parts, reproduction and more.



Powerful Intelligent Tools

iTouch

iTouch is a one-button auto image optimization solution, which is able to optimize the imaging quality automatically, including in B/PW mode.



iTouch

Professional Application Packages

Animal abdomen solutions:

- iScape real-time panoramic imaging
- iNeedle for biopsy needle enhancement
- Elastography Imaging
- UWN Contrast Imaging
- Smart Bladder for automatic volume calculation

Animal cardiac solutions :

- CW/PW automatic tracking & analysis
- Free Xros M for anatomical M mode
- Free Xros CM for curved anatomical M mode
- Tissue Doppler Imaging (supporting 4 modes)
- Tissue Doppler Imaging with Quantitative Analysis



13.3" anti-glare touch screen
30° rotation, easy cleaning

21.5" high resolution LED Monitor
178° viewing angle, ultra slim & easy cleaning



Sliding keypad with protective silicon film
Anti-liquid, anti-animal hairs

4 active transducer ports
Transducer ports protective covers

Unique design for cable management

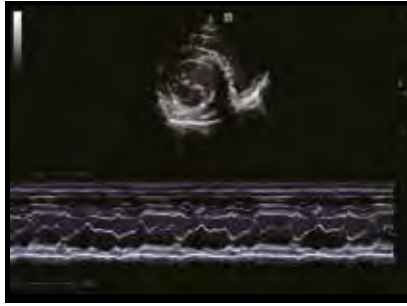
Stable wheels with small footprint
Anti hair-wrapped, 360° rotation

300 Mbps Wi-Fi with easy
connection everywhere





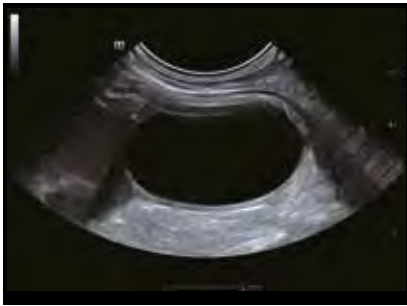
Long Axis View of Canine Heart



M Mode of Canine Heart



Feline Abdomen



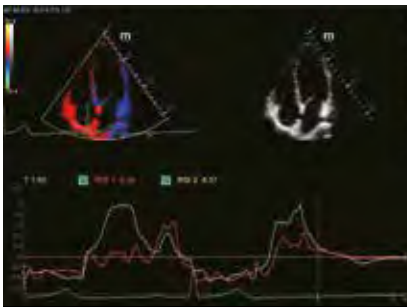
Canine Bladder



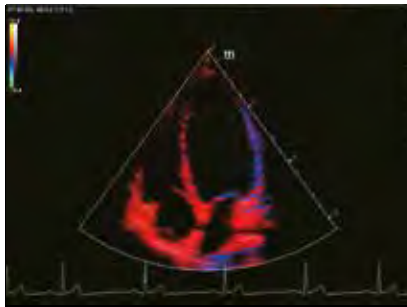
Canine Kidney



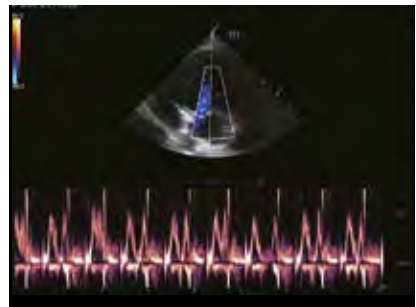
Color Mode of Canine Kidney



TDI QA of Canine Heart



TDI of Canine Heart



PW Mode of Canine Heart

Vetus 5Exp

Veterinary Diagnostic Ultrasound System

Expand your vision





Vetus 5Exp

Mindray Vetus series offer the professional veterinary solution to a wide variety of species ranging from small pets to large farm animals.

Vetus 5Exp is a cost-effective veterinary ultrasound imaging system with multiple intelligent functions. Configured with brand new VETUS platform, making it easily meet the increasingly diversified veterinarian demands.

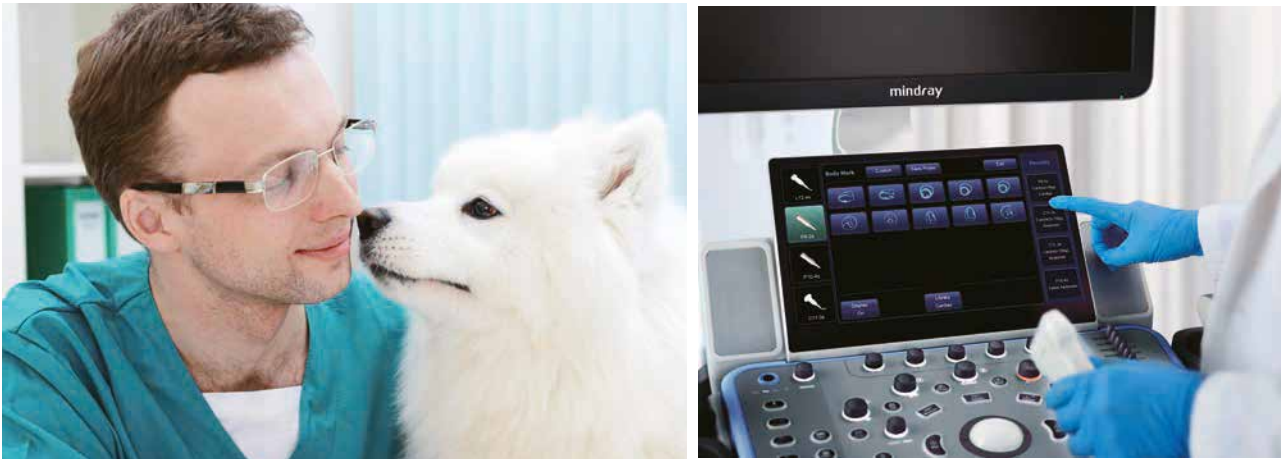
Incorporating the dedicated animals image presets, simple workflow, and veterinary protective design promise an ideal ultrasound system for your everyday practice.

Dedicated Animal Presets

- Professional ultrasound image presets according to different animals' body characteristics
- Animal species are subdivided to different categories by weight and body size for precise diagnosis
- Veterinary recognized measurement formula presets, easily user-defined modification

Simple Veterinary Workflow

- Transducers and the corresponding exam modes are displayed in the same interface, select or switch within 1 second
- Recent 4 modes are presented at hand, one-key to switch the frequently-used exam mode
- Super smart touch screen supports powerful multi-touch operation



Powerful Veterinary Tools

- Auto measurement: Auto PW, Auto CW maximize the productivity for easy-accurate-scanning
- Dedicated application packages: Abdomen/Cardiology/Reproduction/Small Parts
- Resourceful tools: vet formula/comment library/animal body mark/report template

iWorks

Automated workflow guide iWorks standardize and simplify the vet Abdomen/Cardiology workflow, allowing more focus on the animal diagnosis





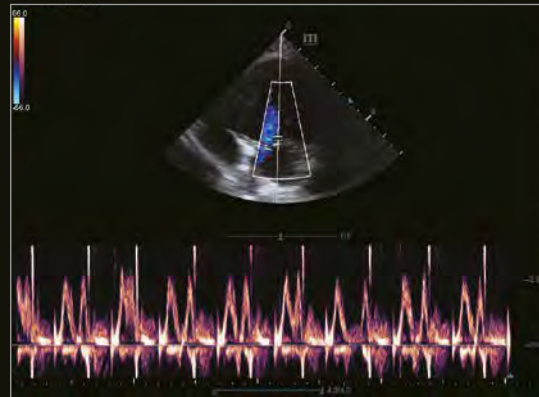
Feline Bladder



Color Mode of Canine Kidney



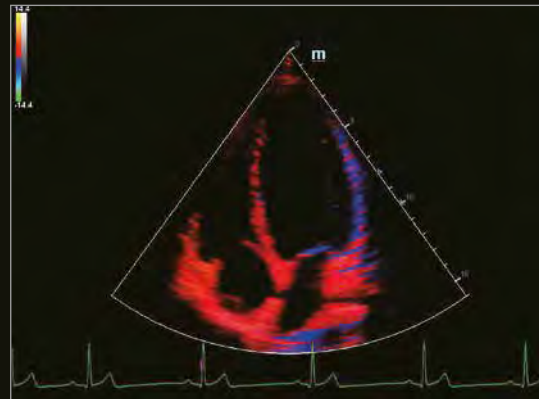
Canine Kidney



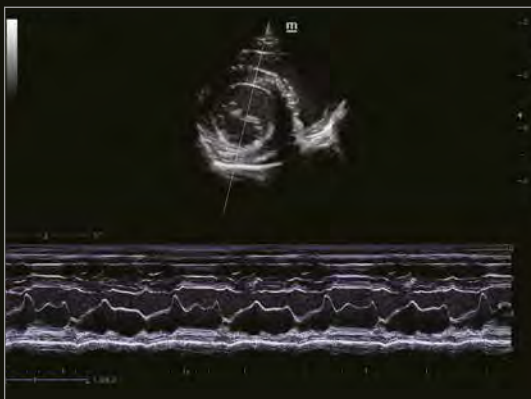
PW Mode of Canine Heart



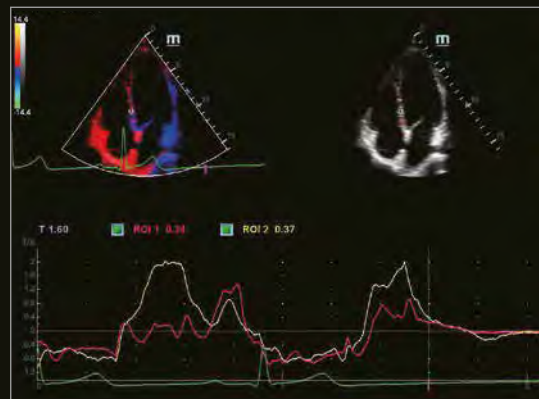
Long Axis View of Canine Heart



TDI of Canine Heart



M Mode of Canine Heart



TDI QA of Canine Heart

Ergonomics dedicated for veterinary practice



13.3" anti-glare touch screen
30° rotation, easy cleaning

21.5" high resolution LED Monitor
178° viewing angle, ultra slim & easy cleaning



Anti-dirty multi-functional control panel
Rotatable & height adjustable

Sliding keypad with
protective silicon film
Anti-liquid, anti-animal hairs

Unique design for cable management
Keep transducer cables off the ground

4 active transducer ports
Anti-hairs & dust protective covers

Large capacity battery for long scanning time
300 Mbps Wi-Fi with easy connection everywhere

Stable wheels with small footprint
Anti hair-wrapped, 360° rotation

Advanced Veterinary Transducer

Abdomen & Reproduction



C11-3

Micro convex array for small-sized animal



C6-2

Convex array for large-sized animal

- **One Probe Solution:** support abdominal, reproduction and basic heart ultrasound
- **Smart Bladder:** automatic calculation of the bladder volume
- **UWN Contrast Imaging:** non-invasive assessment of animal abdomen organs with easy workflow

Superficial & Musculoskeletal



L12-3E

High frequency linear array for multi-sized animal



L14-6

High frequency linear array for small-sized animal

- **iNeedle:** biopsy needle enhancement and guidance
- **iScape View:** real-time Panoramic Imaging to extend the field of view
- **Elastography Imaging:** displaying the tissue stiffness for precise evaluation

Cardiology



P8-2

Mid/high-frequency phased array for mid and small-sized species



P10-4E

High-frequency phased array for small-sized species



P4-2

Low-frequency phased array for large species

Free Xros M-Anatomical M mode: up to 3 sample lines to detect more details

TDI-Tissue Doppler Imaging with complete 4 modes (TVI/TVD/TVM/TEI): wall motion analysis for myocardial function

TDI QA-Tissue Doppler Imaging with Quantitative Analysis: analysis of myocardium motion with strain/strain rate

**More transducers can be supported, please contact your local sales representative for further details.*

Higher Reliable Dependence

Guarantee of safety and stability:



EMC (Electro Magnetic Compatibility)

the highest anti-interference level ensures the stability of imaging quality.



Class B (Power supply requirement)

the lower AC power requirement offers you more safety and compatibility in any complicated environment.



iPower (built-in battery)

Large battery supports scanning for more than 80 minutes enhances the continuity of your daily work even when the power supply is poor, and ensures the mobility.

Dedicated protective design for veterinary practice

For veterinary ultrasound diagnostic systems, it is of great importance to protect the machine from getting dirty by animal hairs, body liquid and dust, which ensure high capability, reliability and long service life.



Keypad protective silicon film, anti-liquid and anti-animal hairs



Integrated control panel, easy cleaning and anti-dust design



Transducer cable management, design for regular and protection



Transducer port cover, protecting the unit from dust and animal hairs

Vetus 7

Veterinary Diagnostic ultrasound System

For animals, for your trust





Vetus 7

Mindray Vetus Series offer professional veterinary solutions catering to a wide variety of species ranging from small pets to large farm animals.

Vetus 7, the premium veterinary ultrasound imaging system, adopts the most cutting-edge ultrasound technology to provide clear and precise image according to different animal species.

Moreover, packaged with the simple workflow, dedicated design and complete veterinary solution make it the ideal ultrasound system for your everyday practice.

Clear & Precise Images

- Professional veterinary image presets according to different animals' body characteristics
- Animal species are subdivided to different categories by weight and body size for precise diagnosis
- 21.5 inch High Definition monitor provides clear tissue details

Simple & Smart Workflow

- Transducers and the corresponding exam modes are displayed in the same interface, select or switch within 1 second
- Recent 4 modes are presented on screen, one-key to switch the frequently-used exam mode
- 13.3 inch touch screen supports powerful multi-touch gesture operation



Powerful Intelligent Tools

- Auto Volume Control System helps to avoid frightening the pet animals
- Auto measure tools: Auto PW, Auto EF maximize the productivity for easy-accurate-scanning
- Automated workflow guide iWorks standardize and simplify the Abdomen/Cardiology workflow, allowing more focus on the animal diagnosis

iTouch

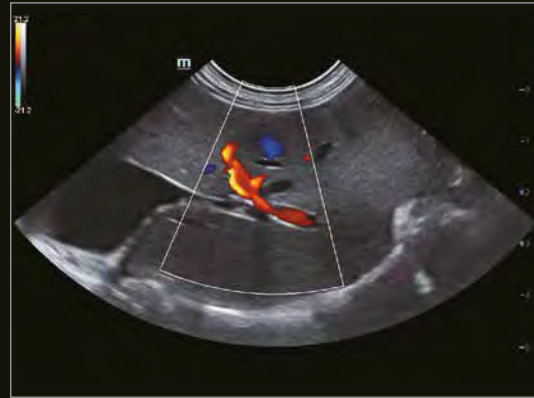
iTouch is a one-button auto image optimization solution, which is able to optimize the imaging quality automatically, including in B/PW mode.



iTouch



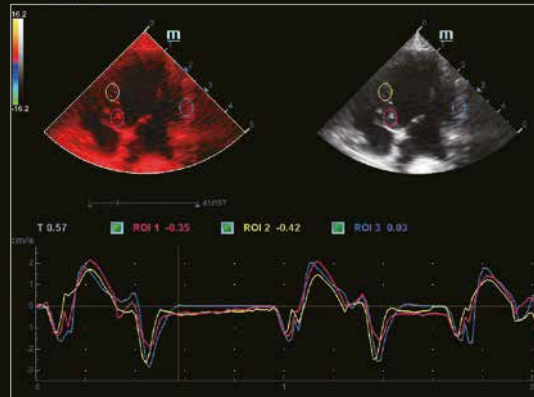
Feline Liver



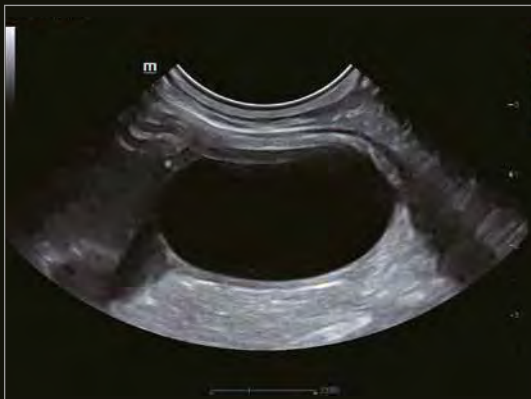
Feline Hepatic Flow



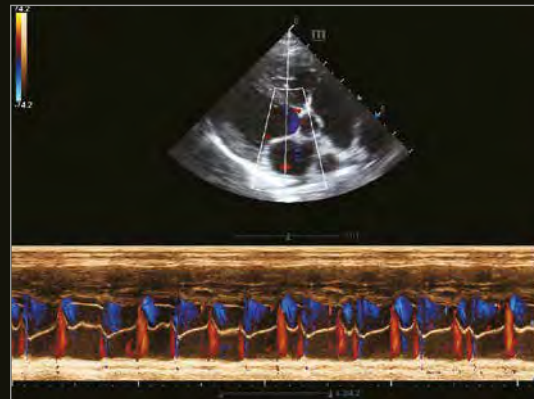
Long Axis View of Canine Heart



TDI QA of Canine Heart



Feline Bladder



Color M Mode of Canine Heart



Canine Abdomen



Canine Kidney

Ergonomics dedicated for veterinary practice

Articulating monitor arm
Move anywhere you want



Sliding keyboard with
designed silicon cover

Designed for cable management
Help keep cables off the ground

Stable wheels with small footprint
Anti hair-wrapped, 360° rotation

21.5" High Definition Monitor



13.3" anti-glare touch screen
30-degree rotation, multi gesture

Anti-dirty silvery panel
Rotatable & height adjustable

High capacity battery for standby mode
Keep the image data always safe

Battery is optional configuration

Small Animal Solution

Feline, small-sized canine and exotic small animals

Abdomen & Reproduction



C11-3s

Micro convex array transducer

- **Dedicated design:** Streamlined and smart size for small animal abdomen
- **One probe solution:** Support both abdominal and basic heart ultrasound
- **Excellent performance:** High penetration with wide field of view (Extended FOV: 140°)

Superficial & Musculoskeletal



L12-4s

High frequency linear array transducer

- **iNeedle:** Biopsy needle enhancement and guidance
- **iScape View:** Real-time Panoramic Imaging to extend the field of view
- **HR Flow:** High resolution flow to provide more details of animal tissue
- **Elastography imaging:** Displaying the tissue stiffness for precise evaluation

Cardiology



P8-2s

Mid/high-frequency phased array
for mid and small-sized species



P10-4s

High-frequency phased
array for small-sized species

- **Free Xros M-Anatomical M mode:** up to 3 sample lines
- **TDI-Tissue Doppler Imaging** with complete 4 modes (TVI/TVD/TVM/TEI): wall motion analysis for myocardial function
- **TDI QA-Tissue Doppler Imaging with Quantitative Analysis:** analysis of myocardium motion with strain/strain rate
- **Auto EF:** Automatic animal heart Ejection Fraction computation
- **Stress echo:** Evaluate segmental myocardium movement with increased workload
- **TTQA-Tissue Tracking with Quantitative Analysis:** track myocardial contraction by detection of the 2D speckle patterns, provide LV regional movement abnormalities diagnostic

Large Animal Solution

Big-sized canine, equine, bovine, ovine and exotic big animals

Reproduction



6LE5Vs

Intrarectal linear array transducer for equine and farm animal reproduction exam

- 3-meter cable tailed for large animal scanning scenario
- Anti-liquid, anti-dirty and easy-clean design
- High resolution with wide field of view designed for IVF

Abdomen



C6-2s

Convex array transducer for abdominal and reproduction scanning in big animals

- **iNeedle:** Needle enhancement and guidance for biopsy
- **iScape View:** Real-time Panoramic Imaging to extend the field of view

Cardiology



P4-2s

Low-frequency phased array transducer for medium-sized & large species

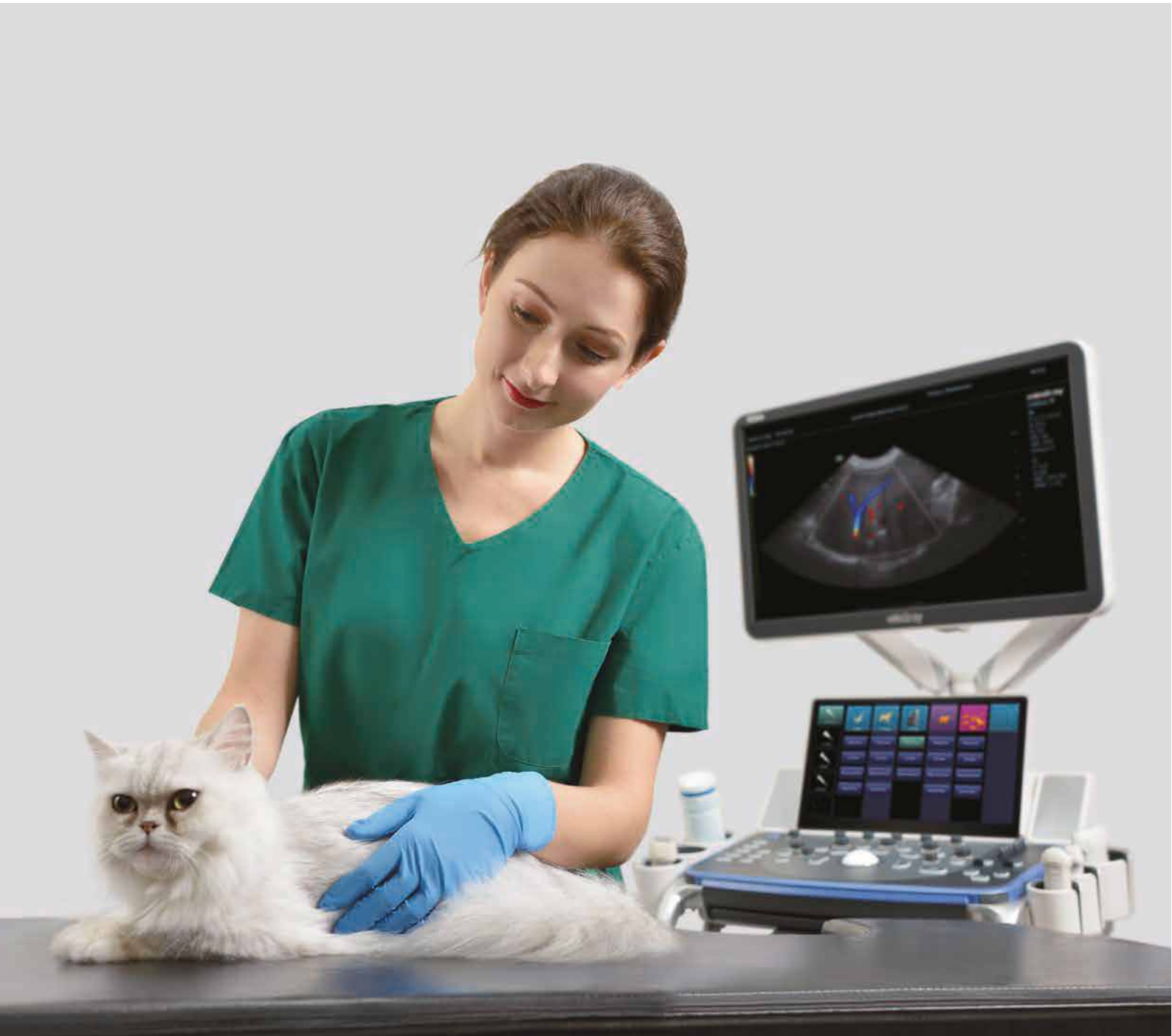
- **Free Xros M-Anatomical M mode:** up to 3 sample lines
- **Free Xros CM-Curved Anatomical M mode:** the sample line manually depicted anywhere on the image
- **TDI-Tissue Doppler Imaging** with complete 4 modes (TVI/TVD/TVM/TEI): wall motion analysis for myocardial function

**More transducers can be supported, please contact your local sales representative for further details.*

Vetus 8

Veterinary Diagnostic ultrasound System

Excellent performance for your trust





Vetus 8

Mindray Vetus Series offer professional veterinary solutions catering to a wide variety of species ranging from small pets to large farm animals.

Vetus 8, the premium veterinary ultrasound imaging system, adopts the most cutting-edge ultrasound technology to provide clear and precise image according to different animal species.

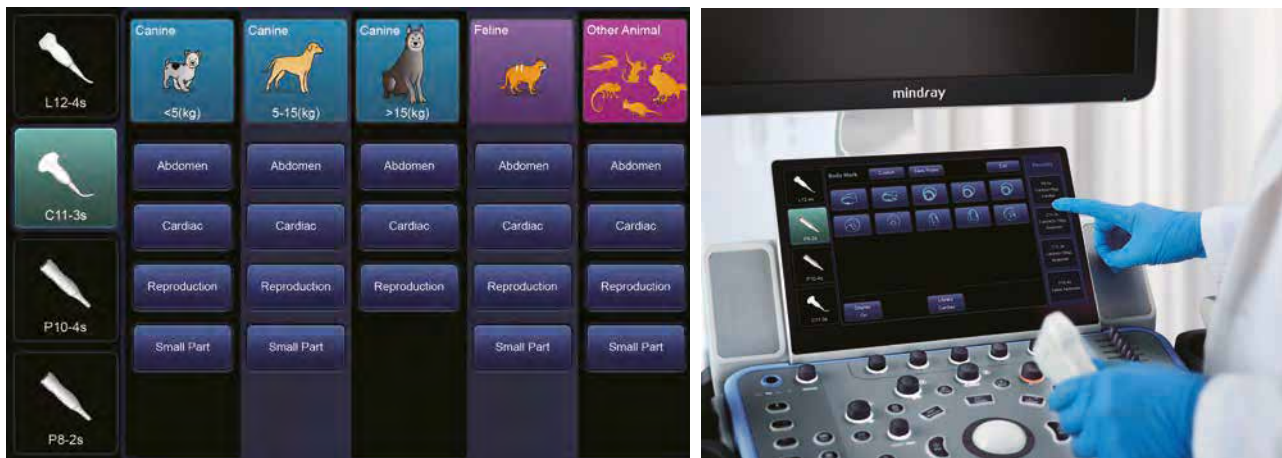
Moreover, packaged with the simple workflow, dedicated design and complete veterinary solution make it the ideal ultrasound system for your everyday practice.

Clear & Precise Images

- Professional veterinary image presets according to different animals' body characteristics
- Animal species are subdivided to different categories by weight and body size for precise diagnosis
- 23.8 inch High Definition monitor provides clear tissue details

Simple & Smart Workflow

- Transducers and the corresponding exam modes are displayed in the same interface, select or switch within 1 second
- Recent 4 modes are presented on screen, one-key to switch the frequently-used exam mode
- 13.3 inch touch screen supports powerful multi-touch gesture operation



Powerful Intelligent Tools

Auto Volume Control System helps to avoid frightening the pet animals

Auto measure tools: Auto PW, Auto EF maximize the productivity for easy-accurate-scanning

Automated workflow guide iWorks standardize and simplify the Abdomen/Cardiology workflow, allowing more focus on the animal diagnosis

iTouch

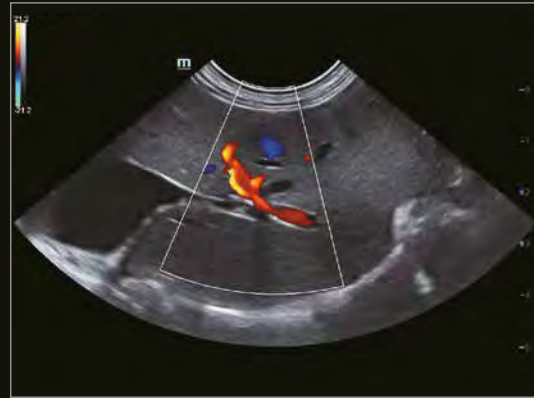
iTouch is a one-button auto image optimization solution, which is able to optimize the imaging quality automatically in B/PW mode.



iTouch



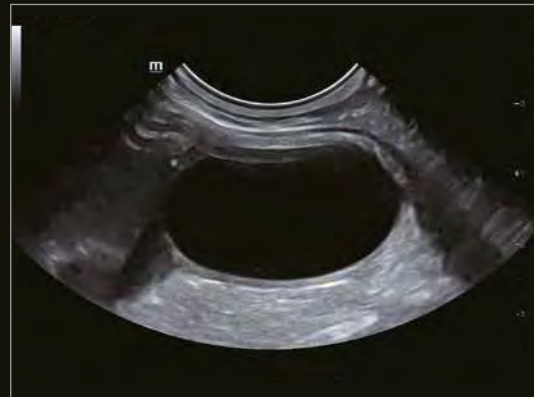
Feline Liver



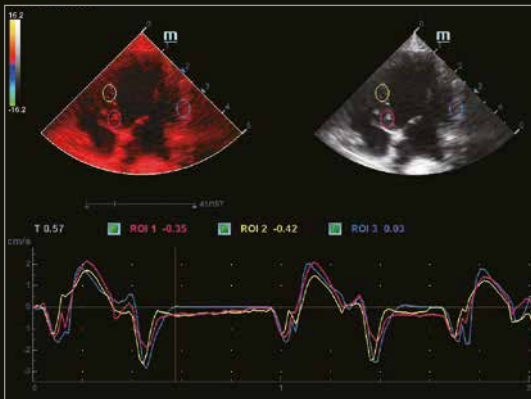
Feline Hepatic Flow



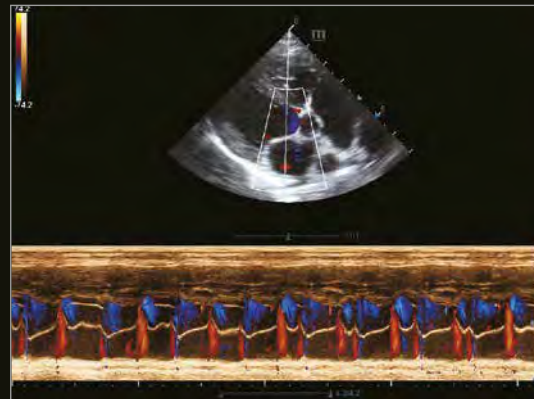
Long Axis View of Canine Heart



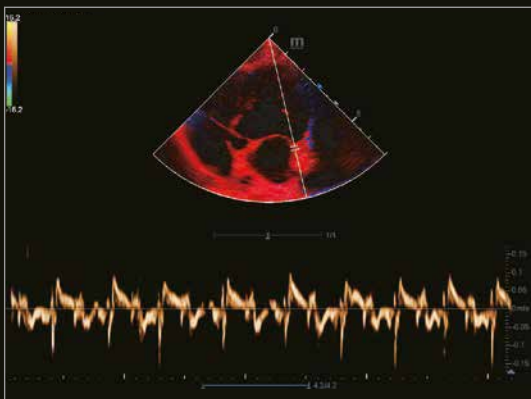
Feline Bladder



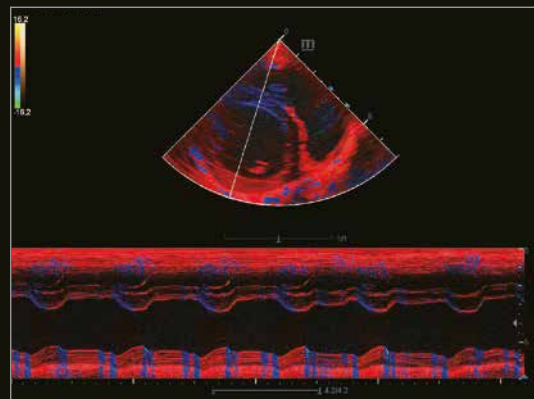
TDI QA of Canine Heart



Color M Mode of Canine Heart



TVD of Canine Heart



TVM of Canine Heart

Ergonomics dedicated for veterinary practice

23.8" High Definition Monitor
180-degree rotation



Dual-Wing Floating Arm
Move anywhere you want



13.3" anti-glare touch screen
30-degree rotation, multi gesture



Sliding keyboard with
designed silicon cover



Anti-dirty control panel
Rotatable & height adjustable



Designed for cable management
Help keep cables off the ground

5 active smart transducer sockets*

High capacity battery for standby mode
Keep the image data always safe

Stable wheels with small footprint
Anti hair-wrapped, 360° rotation

**4 sockets is standard configuration, 5 sockets is purchasable optional.*

Battery is optional configuration

Small Animal Solution

Feline, small-sized canine and exotic small animals

Abdomen & Reproduction



C11-3s

Micro convex array transducer

- **Dedicated design:** Streamlined and smart size for small animal abdomen
- **One probe solution:** Support both abdominal and basic heart ultrasound
- **Excellent performance:** High penetration with wide field of view (Extended FOV: 140°)

Superficial & Musculoskeletal



L12-4s

High frequency linear array transducer

- **iNeedle:** Biopsy needle enhancement and guidance
- **iScape View:** Real-time Panoramic Imaging to extend the field of view
- **HR Flow:** High resolution flow to provide more details of animal tissue
- **Elastography imaging:** Displaying the tissue stiffness for precise evaluation

Cardiology



P8-2s

Mid/high-frequency phased array
for mid and small-sized species



P10-4s

High-frequency phased
array for small-sized species

- **Free Xros M-Anatomical M mode:** up to 3 sample lines
- **TDI-Tissue Doppler Imaging** with complete 4 modes (TVI/TVD/TVM/TEI): wall motion analysis for myocardial function
- **TDI QA-Tissue Doppler Imaging with Quantitative Analysis:** analysis of myocardium motion with strain/strain rate
- **Auto EF:** Automatic animal heart Ejection Fraction computation
- **Stress echo:** Evaluate segmental myocardium movement with increased workload
- **TTQA-Tissue Tracking with Quantitative Analysis:** track myocardial contraction by detection of the 2D speckle patterns, provide LV regional movement abnormalities diagnostic

**More transducers can be supported, please contact your local sales representative for further details.*

Large Animal Solution

Big-sized canine, equine, bovine, ovine and exotic big animals

Reproduction



6LE5Vs

Intrarectal linear array transducer for equine and farm animal reproduction exam

- 3-meter cable tailed for large animal scanning scenario
- Anti-liquid, anti-dirty and easy-clean design
- High resolution with wide field of view designed for IVF

Abdomen



C6-2s

Convex array transducer for abdominal and reproduction scanning in big animals

- **iNeedle:** Needle enhancement and guidance for biopsy
- **iScape View:** Real-time Panoramic Imaging to extend the field of view

Cardiology



P4-2s

Low-frequency phased array transducer for medium-sized & large species

- **Free Xros M-Anatomical M mode:** up to 3 sample lines
- **Free Xros CM-Curved Anatomical M mode:** the sample line manually depicted anywhere on the image
- **TDI-Tissue Doppler Imaging** with complete 4 modes (TVI/TVD/TVM/TEI): wall motion analysis for myocardial function

**More transducers can be supported, please contact your local sales representative for further details.*

Vetus E7

Hand-Carried Ultrasound System

Intelligence, and more



mindray



Since its founding, Mindray has been dedicated to developing innovative and accessible ultrasound solutions for the point of care environment. It is this commitment to excellence that has brought you ZONE Sonography® Technology+ (ZST+), evolving industrial designs and comprehensive disinfection solutions.

The ME7 Ultrasound System has been thoughtfully designed to overcome the obstacles clinicians face in today's challenging healthcare environment. With a sealed user interface design and revolutionary, software-based beamformer technology, ZST+, the ME7 System combines best-in-class image quality with an intuitive user experience to help ensure reliable and efficient diagnosis during the most challenging exams.



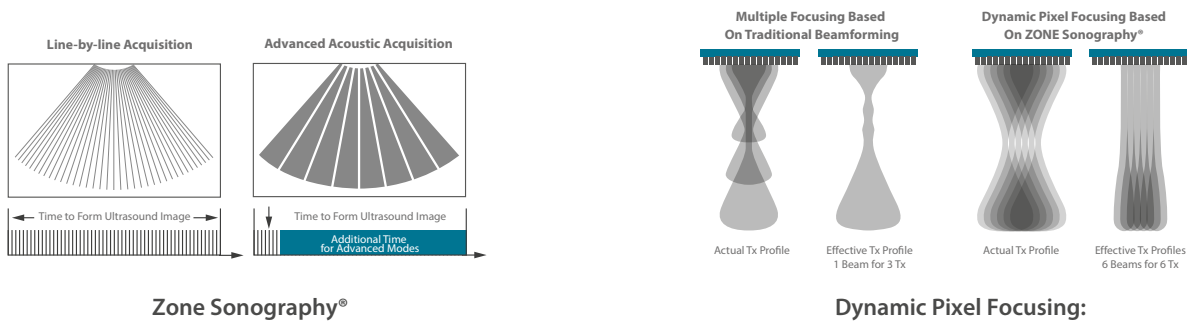
Thin, light, powerful

The VETUS E7 main unit, with a **3kg** weight and **44mm** thickness, is the lightest and thinnest laptop ultrasound system in the industry. Not only is the ME small and compact, but it also has a powerful inner core.



First laptop-based ultrasound powered by ZST⁺

The VETUS E7 is the first portable unit to be powered by our innovative ZONE Sonography[®] Technology (ZST⁺), enabling advanced imaging capabilities and expanded feature sets in a more compact design.



Zone Sonography[®]

Dynamic Pixel Focusing:

Protective design for Veterinary Practice



Innovative design

- Seamless design control panel
- Touch interface
- Sealed touchpad

Durable construction

- Prevents residue buildup from cleaning and disinfection
- Designed to resist corrosion from a variety of harsh cleaning agents
- Highest standards of material selection

Certified disinfectant resistance

- Certification from Dr. Brill and Dr. Steinmann
- Certification from Trophon and Antigermix

External battery status display •

- View battery status anytime, even when System is powered off

Medical-grade magnetic power socket •

- Simple to connect
- Prevents cable strain



U-Bank •

- All-day battery design that supports up to eight-hours of continuous scanning

Cable management •

- Vertical cable orientation prevents dragging
- Adaptable rear handle for cable routing

Specialized transducer holder •

- Simplifies application of sterile cover



Innovative storage design •

- Three storage baskets
- Interchangeable basket design

Expanded height adjustment •

- 320mm of height adjustment that accommodates various user needs



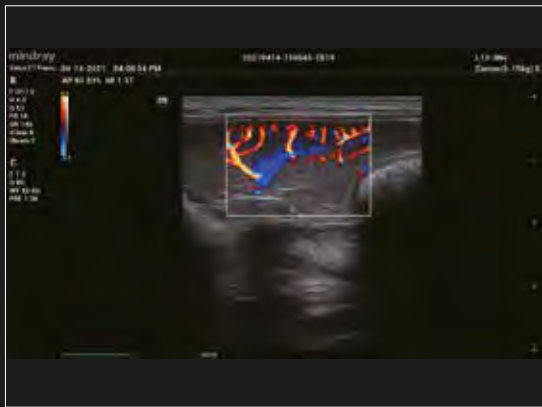
Cart is designed to resist corrosion from a variety of disinfectants.



Hepatobiliary Section



Renal Blood Flow



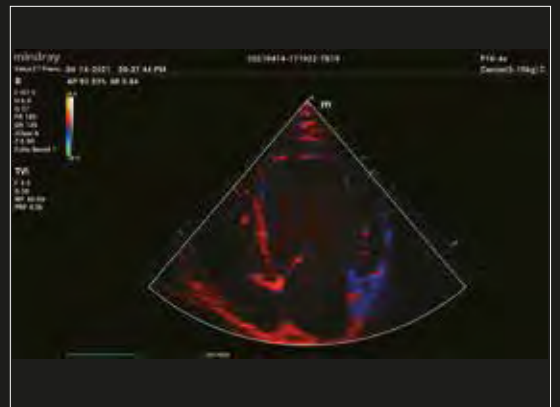
Spleen



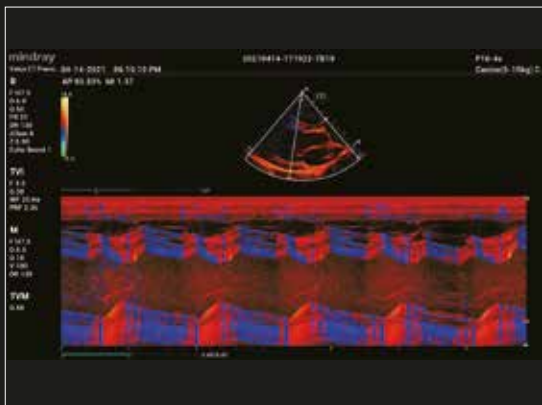
Papillary Muscle



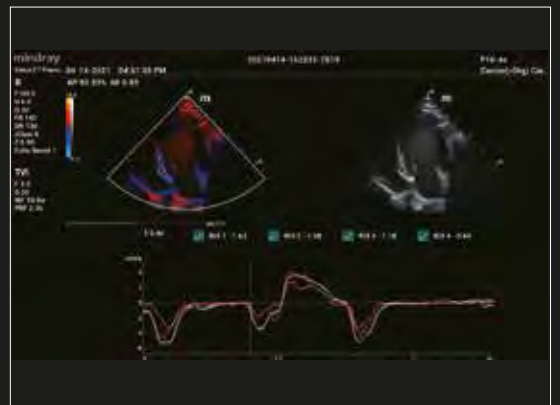
Color Doppler of LV



TVI



TVM



TDIQA

mindray

Veta 5/ Veta 3

Veterinary Anesthesia Machine

Redefining Animal Anesthesia Machine








Anesthesia safety is always a key concern for veterinarians and pet owners. But today this means facing higher requirements and new challenges.

The Veta series of anesthesia machines introduce cutting-edge technology, combined with advanced clinical practices. It transforms the experience of working with veterinary anesthesia by its intelligent ventilation mode and integrated design concept, ensuring the safety of both animals and veterinarians.

Form Refreshing

Integrated design, creating a simple and comfortable operating space

-  Integrated ventilator, no exposed tubes and lower leakage risk
-  8-inch capacitive touch screen, intuitive operation and efficient interaction
-  Electronically driven by high-performance turbine, no drive gas needed



Flexible workstation

Multiple mounting solutions for patient monitors, pumps and oxygen generators, improving utilization of space.



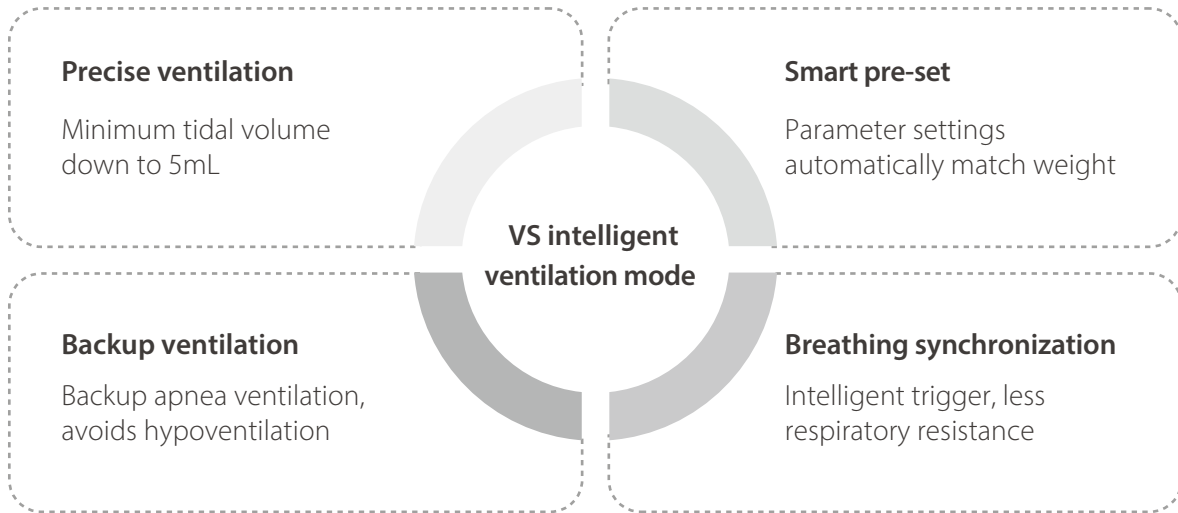
Modular Upgrade

Upgrades available from Veta 3 to Veta 5, adding ventilators and providing more options.



Safety Renovating

Intelligent ventilation mode tailored for animals



Complete display of patient status

- Comprehensive monitoring, complete display of patient status
- Optional sidestream CO₂ monitoring, ensuring safe anaesthesia



More security measures

Auto system leak test

- Graphic guidance
- One-key startup



Gas filter canister replacement reminder

- Accurate calculation of agent absorption, matching different canisters
- Automatic reminder to change canister

Multiple types of waste gas scavenging system



Gas filter canister



Passive AGSS



Active AGSS



Electronically driven and controlled, no drive gas needed

Optional sidestream CO₂ monitoring

Integrated breathing circuit

Gas filter canister replacement reminder

VS intelligent ventilation mode, TV down to 5mL

8-inch capacitive touch screen

High-precision vaporizer

Optional oxygen generator tray

Frequently Asked Questions:

1. Is the ventilator same as "Smart Ventilator" from RWD LIFE SCIENCE – is it automatically turned on when the patient goes into apnea?

Ans: Yes, In VS (volume support) mode, ventilator will automatically be turned on when the patient respiration rate is lower than the minimum respiration rate in the parameter. In this part, most manufacturers have the same operation.

The most important thing is that the "Trigger" in the Veta parameter has an Auto function. From the beginning of operation to waking up, vets do not need to adjust the "Trigger" parameter. Veta will not interfere with spontaneous breathing and avoid complications. In addition, the spontaneous breathing of very small patients (<5kg) can be detected by the Veta. These are the things that RWD devices cannot perform.

2. Does the ventilator need a compressor to operate?

Ans: No, Veta uses a turbine to drive the ventilator, it does not require driving gas. But Veta still needs an oxygen cylinder or oxygen generator to provide oxygen for anesthetics.

3. Does it have an alarm when patient goes into apnea?

Ans: Yes, At the same time, the ventilator starts to work according to the minimum breathing rate.

4. Does the unit come with an oxygen concentrator?

Ans: No

5. Is the Ventilator and Anesthesia units in the Veta5 are separate? Meaning if one breaks down, does it mean both units then will not work?

Ans: Our anesthesia machine and ventilator are integrated, this design helps to reduce the risk of leakage. Switch between mechanical ventilation and manual ventilation in one-step, no need to replace the pipeline.

If ventilator is broken, Veta still can work in manually, besides, thanks to the modular design, the ventilator can be disassembled and sent for repair.

6. Regarding the Veta 5 Anesthesia machine, we like to clarify what the brochure and introduction video (<https://www.youtube.com/watch?v=L1obKif3Vc>) regarding the monitor are displaying. It looks like that the monitor is an anesthetic monitor only, it seems to be only displaying information regarding the mechanical ventilator (i.e. VS, VCV) and not saturation, BP, and the other parameters? So will an additional monitor (uMec) be required?

Ans: It can display EtCO₂ waveform and pressure time waveform. EtCO₂ is optional. In addition, it will display the parameters of the ventilator, such as tidal volume, respiratory rate and minute ventilation, choice of breathing mode, and so on.

Monitor is required if you need BP, ECG, saturation and so on.

Ventilation Parameters

Setting parameters	Description
Vt	The gas volume that the animal inspires or expires each time during resting breathing.
Pinsp	The inspiratory pressure in the pressure control mode is an absolute value relative to the PEEP.
PEEP	Positive end expiratory pressure.
RR	The number of mechanically controlled breaths in one minute.
Tinsp	Inspiratory time in one breathing cycle.
I:E	Ratio of inspiratory time to expiratory time.
Trigger	Includes auto trigger, flow trigger (F-Trigger) and pressure trigger (P-Trigger). As for pressure trigger and flow trigger, when the trigger level is detected, the ventilator starts to enter the inspiratory phase.
MIN RR	The mechanically controlled breaths will be triggered when the inspiratory time surpasses the breathing cycle time of minimum respiratory rate.
ΔP_{supp}	A relative value of PEEP.

Monitoring parameters	Description
Vt	The expired tidal volume in one cycle.
Pplat	The maximum pressure in one breathing cycle or a fixed period of time.
PEEP	Positive end expiratory pressure.
RR	The respiratory rate monitored in one minute.
MV	The accumulated expired tidal volume in one minute.
EtCO ₂	The concentration of CO ₂ measured at the end of expiration.
FiCO ₂	The concentration of CO ₂ measured at the end of inspiration.

Optional Monitors: uMEC12 Vet Patient Monitor

Standard Parameters: 3/5-lead ECG, Resp, Mindray SpO2, NIBP, PR, 2-ch TEMP

Options Parameters: IBP, C.O., Sidestream CO2

	Basic (without CO2)			with CO2			CO2/IBP
	Standard configuration	Standard configuration, touch screen	Standard configuration, touch screen, recorder	Standard configuration, I/O port, SD card, CO2	Standard configuration, touch screen, I/O port, SD card, CO2	Standard configuration, touch screen, Recorder, I/O port, SD card, CO2	Standard configuration, touch screen, Recorder, I/O port, SD card, IBP, CO2
uMEC12 VET Patient Monitor	Basic 1	Basic 2	Basic 3	CO2-1	CO2-2	CO2-3	CO2/IBP
Main Unit	Main Unit	Main Unit	Main Unit	Main Unit	Main Unit	Main Unit	Main Unit
Screen	Norm Screen	Touch Screen	Touch Screen	Norm Screen	Touch Screen	Touch Screen	Touch Screen
ECG algorithm	Mindray 3/5-lead+ARR+ST	Mindray 3/5-lead+ARR+ST	Mindray 3/5-lead+ARR+ST	Mindray 3/5-lead+ARR+ST	Mindray 3/5-lead+ARR+ST	Mindray 3/5-lead+ARR+ST	Mindray 3/5-lead+ARR+ST
Battery	Li-ion Battery (2500mAh)	Li-ion Battery (2500mAh)	Li-ion Battery (2500mAh)	Li-ion Battery (2500mAh)	Li-ion Battery (2500mAh)	Li-ion Battery (2500mAh)	Li-ion Battery (2500mAh)
Storage Card	/	/	/	Storage Card	Storage Card	Storage Card	Storage Card
Recorder	/	/	Recorder	/	/	Recorder	Recorder
CO2 Module	/	/	/	Sidestream CO2(M02D)	Sidestream CO2(M02D)	Sidestream CO2(M02D)	Sidestream CO2(M02D)
CO2 Accessory Kit	/	/	/	/	/	/	/
IBP Module	/	/	/	/	/	/	2 Channel IBP Module
IBP Accessory Kit	/	/	/	/	/	/	/
Analog output/Defib Sync	/	/	/	Analog output	Analog output	Analog output	Analog output



uMEC12 Vet

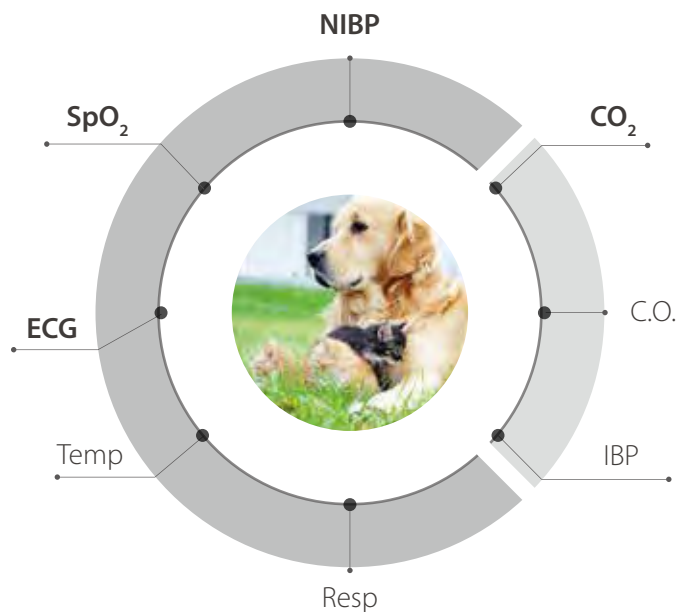
Safety & Efficiency for Veterinary Monitoring



Accurate Monitoring

With nearly 30 years of technical accumulation, uMEC Veterinary Monitor is the reliable choice for animal monitoring by providing comprehensive and accurate parameter measurements and animal-specific accessories.

Special animal algorithm



- **NIBP** Animal specific algorithm can detect weak signal and interference for animal ensuring measurement quickly and accurately
- **SpO₂** Advanced technologies for interferences and weak perfusion
- **ECG** The unique patented ECG algorithm and ECG Smart Lead ensure stable monitoring
- **Side-stream CO₂** Gold-standard Artema technology for accurate measurements

Professional accessories



ECG:
ECG crocodile clips will prevent falling and ensure signal stability



SpO₂:
Clips for animal tongue and ear



NIBP:
Multi-size cuffs for different animals



Efficiency and Easy to Use

uMEC Veterinary monitor is designed for ease of use and will make your work easier.

- 12.1 inches high resolution LED screen with optional touch screen
- Unique accessory cabinet makes accessories management effective
- Less than 4kg weight with battery make it portable



Reliable and Durable

To be effective in different environment, uMEC has low-power design and a series of rigorous tests to ensure long time use.

Low Power Design



No-fan Design



Low Power Consumption



Durable components

Multi-scenario Tests



Resistance 0.75m fall



Durable and robust casing

Technical Specifications

Display	12.1 inches, color LED, touch screen(optional)	
Resolution (pixels)	800 x 600	
Weight (kg)	<4.0kg	
Battery	Standard: Chargeable Lithium-Ion, 2.5Ah Optional: Chargeable Lithium-Ion, 5Ah	
Runtime	Standard: > 4 h Optional: > 8 h	
Basic Parameters	ECG, SpO ₂ , NIBP, PR, RR, Temp	
Extended Parameters	CO ₂ , IBP, C.O.	
Recorder	Thermal dot array, number of waveform channels: maximum 3	
Data Storage	Trends: 120 hours Mid-length trends: 4 hours Long-trends: 1200 hours Parameter alarms: 1800 Arrh. Events: 128 NIBP measurements: 1600 sets Full-disclosure waveforms: 48 hours at maximum.	
ECG		
Lead type	3/5 lead	
HR range(bpm)	15 ~350	
SpO₂		
SpO ₂ range(%)	0 ~ 100	
PI Range (%)	0.05 ~ 20	
NIBP		
Operation mode	Manual, STAT, Sequence	
Range (mmHg)	Systolic:25 ~ 290 (>23kg)	25 ~ 240 (<23kg)
	Mean:15 ~ 260 (>23kg)	15 ~ 215 (<23kg)
	Diastolic:10 ~ 250 (>23kg)	10 ~ 200 (<23kg)
CO₂		
	Infrared absorption	
Sample flowrate	120 ml/min, 90ml/min	
Range (%)	0 ~ 20	

VetiX P8

Veterinary Digital Radiography System
Smarter, Safer and Better



VetiX P8

VetiX, the brand new professional veterinary Digital Radiography solution of Mindray Animal Medical, offers quality and safe diagnosis images for animals. Vetix P8 with the advanced X-Ray technology, provides powerful and stable output for user conveniences. Moreover, packaged with the simple workflow, dedicated smart design and complete software applications make it the ideal DR system for your animal practice.

Quality ensures Safety

- **All-in-one Generator:** long service life X-Ray tube with auto focus spots, 8" touch screen with all operation in your fingers
- **High performance Digital Detector:** large size with new Cesium Iodide materials, IPX4 waterproof, higher stability and resolution ratio
- **Ultra-low radiation leakage:** connection parts with double lead-sealing technology, less X-ray leakage ensures the operation safety



Professional Vet Workstation

New designed veterinary workflow with intuitive operations, which enables the X-Raying of any kind of animal in just THREE steps.

- Intuitive dog & cat anatomic graphic user interface makes it easy to choose the exam mode by one touch.
- Auto matching the exposure parameters and auto optimizing the image quality.
- Dedicated tools: VET measure formulas, comments, reports templates.



Larger Display

8" LED touch screen
Full finger gesture control



Larger Display

8 kw output
Cover all companion animals



Longer Lifetime

80,000 exposure tube
Longer lifetime, less pollution

Vet measurement software packages

- VHS, the ratio of vertebrae to heart measurement;
- TTA, the tibial trochanter forward measurement;
- HD, the hip dysplasia measurement;
- TPLO, the tibial plateau correction osteotomy measurement.

All-in-one X-Ray generator

- Innovation combination main unit design
- 8" touch screen with all operation in your fingers
- Dual laser pointer collimator, intelligent display

Robust & versatile design

- Integrated mechanical structure for easy cleaning
- Smart components with ultra-easy installment
- Versatile usage covering all companion animals



High sensitivity digital detector

- High sensitivity based on TFT technology
- Durable design with solid body
- 14" *17", Cesium Iodide materials



IPX4 waterproof

Space saving at every practice

- Table free movement, diagnosis anywhere
- Anti-hair wheels with fasten brake system
- Small footprint for space saving

System	Item	Technical Specifications
All-in-one DR main unit	Power Input	AC 200~240V, 50/60 Hz, single-phase (wall plug)
	Power Output	8.0 kW (100 mA, 80 kV, 0.1 s)
	User Interface	8" multitouch monitor, animal graphic user interface
	Dimensions	310 × 267 × 465 mm (L*W*H)
	Total Weight	21 Kg
	X-Ray Tube	kV Range: 40~125 kV
		mA Range: 3.2~160 mA
		ms Range: 1~10000 ms
		mAs Range: 0.1~250 mAs
		Focal spot: 0.6/2.8 mm, focal length: 1050 mm
	Built-in Collimator	Manually operated collimator with full field light localiser
LED lamp 10 W, laser pointer, automatic timer: 30 sec.		
Field max. 45 cm x 45 cm @1050mm SID		
Digital Detector	Flat Panel Detector	Scintillator CsI (Cesium Iodide)
		Image active field: 36 cm x 43 cm (14" x 17")
		Pixel size: 140 μm, dynamic range: 16 bits
Diagnosis Table	Free-moving Table	Dimensions: 1200 x 650 x 730mm (L*W*H)
		Maximum loading weight: 60 kg
		Stainless steel construction, four lockable castors
Main Unit Stand	Stand Column	Total height: 1925mm
		Robust body with anti-corrosion coating material, easy cleaning
Workstation	Workstation Software	Mindray Veterinary Workstation DROC
		PACS /DICOM 3.0, graphic user interface with dedicated workflow
	Workstation PC	DELL OptiPlex (5080MT/4G RAM/1TB HDD/Win10/64bit)
		DELL HD Monitor (23.8"/LED/IPS)

WHY EUROVETS?



IMPORTER

Source and import the highest quality products to meet the needs of veterinary, equine and camel markets across the GCC region.



FACILITIES

Fully certified,
Temperature-controlled warehouses.



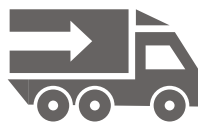
SEMINARS AND CPD EVENTS

Continuing professional development (CPD) seminars and events deliver relevant, practical knowledge for veterinarians and healthcare professionals.



BRAND MANAGEMENT & MARKETING

Digital & traditional marketing support for the brands and products we represent.



LOGISTICS, FLEET AND DISTRIBUTION

Temperature-controlled vehicle fleet and state-of-the-art inventory management system.



AFTERMARKET SOFTWARE AND SUPPORT

In-house technical field support team provides onsite installation, staff training, equipment maintenance and software updates.

Eurovets YOUR complete veterinary Supply and Support SOLUTION.



Copyright © 2021

Eurovets Veterinary Medicines LLC

All rights reserved

CONTACT US:

Tel: +971 4 434 2436

Whatsapp: +971 58 170 1736

E-mail: orders@euroveteworld.com

Address: Warehouse A6, Dubai Science Park, Dubailand,
Al Barsha South, Dubai, United Arab Emirates

For online orders visit:
eurovets.ae

