

Foschi

CATALOGUE



YOUR COMPLETE VETERINARY SUPPLY AND SUPPORT SOLUTION





ABOUT EUROVETS

EUROVETS IS YOUR COMPLETE VETERINARY SUPPLY & SUPPORT SOLUTION

Eurovets, established in 2001 has become the Middle East's foremost supplier of some of the world's best known veterinary products to veterinary clinics throughout the UAE.

We represent leading multi-national brands in nutrition, veterinary equipment, medicines and consumables for companion, -equine and production animals. In addition to the traditional wholesaling, Eurovets provides warehousing, distribution, marketing and sales resources in order to support the product in the region. We also offer a host of value-added services such as maintenance and support for all equipment supplied; service-based offerings such as Spectrum allergy testing; even end-to-end IT solutions for clinics.

Eurovets supports Continued Professional Development, imparting knowledge of the latest developments in the field to veterinary professionals through high-powered seminars. We pride ourselves on our professional approach and offer vet specialized product advice where required.

In conclusion our mission is to not only deliver excellent products but to be committed to deliver exceptional customer service to all veterinary clinics and pet retailers in the region. Eurovets YOUR headquarters for veterinary supply and support, and a proud distributor of the Foschi brand.



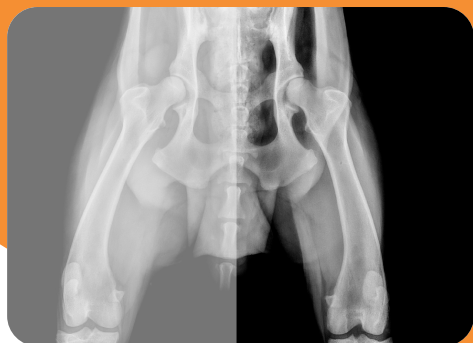
ABOUT FOSCHI

Foschi is part of the Demas Group, which is an Italian Company founded in 1968 from the Foglietti Family.

They are committed to:

- Leadership and excellence in delivering quality healthcare veterinary products, services and knowledge;
- Educating and training veterinarians and other veterinary healthcare professionals;
- Striving to improve the health status of animals.

Foschi's division ARIA (Advanced Resources for Imaging and Application) is dedicated to the radiology market for equine and small animals. They supply direct and computed radiography solutions, software, accessories for DR panels and digital radiology units.



INDEX

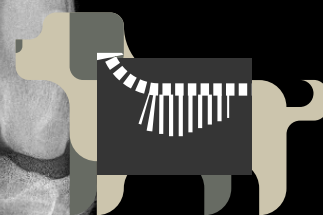
	Page
Radiology - ARIA	4
Advantages of ARIA	5
Foschi X1 Plus system	5
4 Way Float X-ray table	6
Aria X-ray generator	6
DR - Direct Radiography solutions	7
Accessories for DR panels	7
Intra-oral sensor	7
Vita Flex CR system+	8
CR Vita Flex Cassettes	8
X-ray Accessories	9
Rocket Health Technologies	10-11
Ophthalmology	
Vantage Plus Keeler	12
Practitioner Ophthalmoscope 3.6V Keeler	12
PSL Classic Portable Slit lamp Keeler	13
Mini Loupes Keeler	13
Equipment.	15
Foschi Laser D5-810	15
Foschi F160HF Radio-scalpel	16
Foschi F200 electro-scalpel	17
Foschi F120 electro-scalpel.	18
Diamx Vet	19
Pulse Oximetry M800 VET-S1 with SP0 ₂	20
Pulse Oximetry M800 VET-S1 with 3-lead ECG	20
O ₂ Concentrator 0-8 LT/MIN	21
Mayo serving trolley - Foschi	21
Bridge serving trolley - Foschi.	21
Electrocardiograph: 1 channel	22
Electrocardiograph: 3 channels	22
Electrocardiograph: 6 channels	22



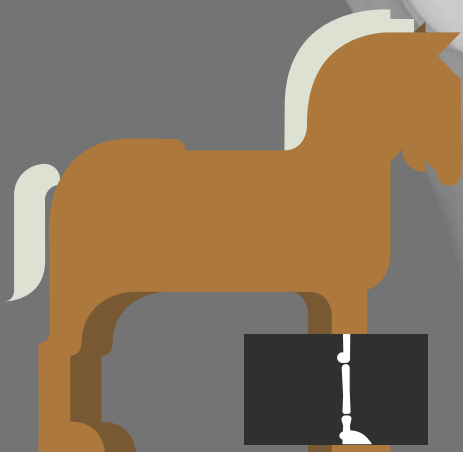
WITHOUT ARIA



Advanced Resources
for Imaging and Applications



POWERED BY ARIA





ADVANTAGES OF ARIA: SPECIFIC, CONCRETE, IMMEDIATE

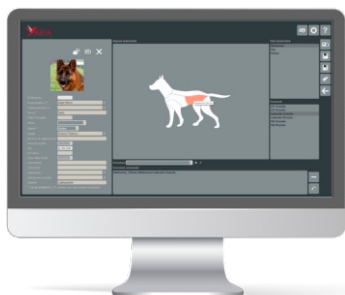
Designed and developed in Italy by Foschi 

ARIA Software is an intelligent and versatile software to help veterinarians capture high quality images, generating clear results in just a few seconds in order to make more precise and prompt diagnosis. Is not just a software tool but a robust platform to manage the whole workflow of the clinic, from reports to medical records and from archive to administrative data.

YOUR IMAGES JUST IN **THREE CLICKS**.



1. CREATE A WORKLIST



2. SELECT THE ANATOMICAL PART



3. DIAGNOSE

FOSCHI X1 PLUS SYSTEM + ARIA®

Made in Italy 

Advanced Resources for Imaging and Applications

The radiology unit X1 Plus represents the maximum innovation in the field of high frequency equipment for veterinary radiology. With a power of 30 kW, the rotating anode of the X1 Plus enables very rapid exposure times, thus ensuring the quality of radiography at any time. The convenient front touch screen enables the selection of the exposure parameters, already available and divided into animal breed, size and projections.



code	description
00712316 - E005775	X-ray generator - 30 kW - 400 mA/100 kV integrated with ARIA software
00721350 - E005776	X-ray generator - 30 kW - 400 mA/100 kV with variable focal distance and rotating head, integrated with ARIA software



4 WAY FLOAT X-RAY TABLE

Made in Italy 

Floating table, suitable for our full range of portable x-ray generators, with a solid, compact structure and a noiseless mechanical brake. It is able to easily get perfect positioning every time thanks to table movements in every horizontal direction.

X-ray grid (optional): focused 100 cm, ratio 8:1, 103 lines per inches. The grid is mounted on removable support that permit an easy preparation for exams without the grid.



code **00000282**

code	description
00000282 - E005777	4 way float x-ray table
22700282 - E005778	4 way float x-ray table + portable generator 9020



code **22700282**

ARIA X-RAY GENERATOR

The lightest and most powerful 20 mA generator of the market. ARIA 8020 generator has a maximum output of 1,6 kW in 6,8 kg only.



CHARACTERISTICS

Output:	20mA@50-80kV (0.02 - 0.10 sec.) 15mA@50-80kV (0.11 - 2.0 sec.)
Timer:	0.02-2.00 sec
AC input:	230V (50/60Hz)
Size:	W 182mm x H 157mm x L 299mm
Focal Spot:	0.8mm
Total filtration:	3.0mm Al equivalent
Memory storage:	5 presets
Laser pointer:	Dual laser
Size:	W182mmxH157mmxL299mm
Weight:	6.85 kgs



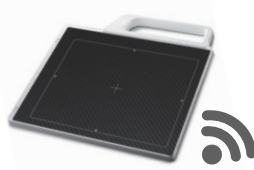
code **00003855 - E006215**



DR - DIRECT RADIOGRAPHY SOLUTIONS






DR7-C + ASCV



**DR8-C + ARIA
SOFTWARE CAPTURER
AND VIEWER**



DR9-C + ASOP

CODE	02012341 - E005783	02012342 - E005781	02012346 - E005782
ACTIVE AREA	43x43 cm	25x30 cm	35x43 cm
SCINTILLATOR	CsI	CsI	CsI
CONNECTION	Wired	Wireless	Wireless
DIMENSION (WxLxH)	460 x 460 x 15,9 mm	395 x 337 x 18 mm	384 x 460 x 15.4 mm
ACTIVE PIXEL	3328 x 3328 px	2080 x 2560 px	2756 x 3268 pixels
PIXEL PINCH	127 µm	127 µm	127 µm
DATA ACQ. TIME	< 2 sec.	< 2 sec.	< 2 sec.
WEIGHT	5,3 Kg	2,85 Kg	3,1 kg
SPECIES			

ACCESSORIES FOR DR PANELS

BACKPACK



code **00500925**
E005785

HARD CASE TROLLEY



code **00721898**
E005784

ARIA SOFT CASE



code **00712654**
E005786

INTRA-ORAL SENSOR

DR15 is the industry leading intra-oral sensor, offering superior diagnostic images that are essential to successful implant surgery and endodontic treatment. Featuring unparalleled durability and image quality, DR15 delivers speed and efficiency while maintaining patient comfort.



code **00712331**
E005787





VITA FLEX CR SYSTEM +

code **02069509 - E005826**

CARESTREAM Vita Flex CR Systems are designed for small-to-midsize hospitals, clinics and practices that need compact digital solutions at an affordable price. With two options for throughput speed, Vita computed radiography systems offer in-house, high-quality digital imaging to fit your workflow. The flexible orientation makes it perfect for small spaces in offices or in mobile settings.

- Smaller size and weight
- Multiple throughputs (30/45 PPH)
- Ability to be positioned for horizontal or vertical feeds
- Supports a number of cassette sizes
- Uses Image Suite Software – easy-to-use platform specially designed for the end user



3 Replaceable Parts

- Superb reliability keeps you up and running
- But if service is needed – it's fast and simple
- Fix it yourself with 3 easy-to-install field replaceable units
- No tools or technical skill needed
- Or choose full-service repair from a certified technician

CR VITA FLEX CASSETTES

code	description
00721143 - E005825	Cr cassette + flexible phosphor screen gp-2 35x43 cm
00721141 - E005827	Cr cassette + flexible phosphor screen gp-2 24x30 cm
00721795 - E005828	Cr vita - flexible phosphor screen gp-2 35x43 cm
00721142 - E005829	Cr vita - flexible phosphor screen gp-2 24x30 cm

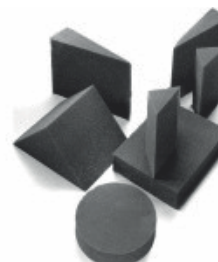


code	description
01060979 - E005830	Holder for Intra Oral Vet Package
01060987 - E005831	CR Cassette 25x30 cm for VITA CR I/O Vet Package
01060995 - E005832	VITA dental vet plate size 4 - 2 pieces
01061001 - E005833	VITA dental vet plate size 2 - 4 pieces
01061019 - E005834	VITA dental vet hygienic envelops size 4 - 200 pieces
01061027 - E005835	VITA dental vet hygienic envelops size 2 - 200 pieces
02721476 - E005844	Dental solution - Package -



X-RAY ACCESSORIES

code	description
00002658 - E006115	Xray positioning circular block – big 25 x 20 x 11 cm
00002659 - E006120	Xray positioning circular block – small 11,5 x 20 x 6 cm
00002655 - E006121	Xray positioning rectangular block - 25 x 20 x 7 cm
00002657 - E006122	Xray cylinder bolster - 11 x 25 cm
00002656 - E006123	Round xray positioning block - 20 x 5 cm
00002660 - E006124	Round xray positioning block with hole - 20 x 7,5 x 7 cm



code	description
00500986 - E005779	Portable generator holder
00707515 - E005780	Hip dysplasia holder



code	description
00673215 - E005789	Apron - 0.50 mm lead equivalence - 110 cm
00721338 - E005790	Apron - 0.50 mm lead equivalence - 120 cm

code	description
00673223 - E005791	Thyroid Shield - 0.5 mm lead equivalence



code	description
00407018 - E005792	Gloves - 0.5 mm lead equivalence

code	description
00842017 - E005793	Eyewear - front and side protection

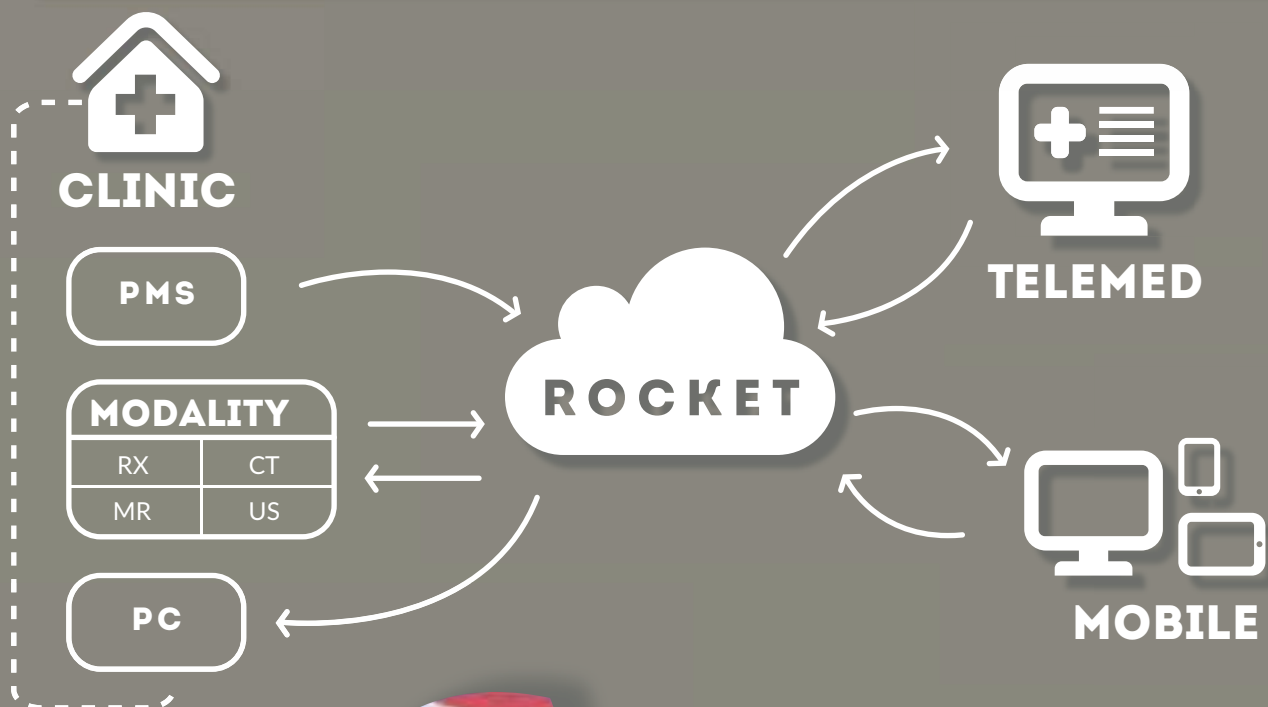




ROCKET
HEALTH TECHNOLOGIES

IMAGING AND TELEMEDICINE

Rocket Platform Solution



Designed by Vets for Vets

- PACS
- Last generation viewer for DICOM Image
- Exam and Breed adaptive naming/definition
- Easy Study Search
- Temporary modality
- Encrypted Data Transmission
- Lossless data compression
- Security Back Up
- Ready for PMS integration
- Vendor Neutral Archive
- Telemedicine Platform*
- Advanced Orthopedic measurement tool*
- Reporting*

*Starting 2018 in the UAE

ROCKET MAIN FEATURES



LOST FILES IN YOUR CLINIC? NEVER AGAIN

Rocket PACS platform enables structured files storage, with perfect management of digital files, such as DICOM, images, audio, video, photos and pdf.

STRUCTURED FILES STORAGE

Rocket has an open-PACS (Vendor Neutral Archive) that allows you to store all digital files, not just DICOM

YOUR DATA AT REACH IN A CLICK

Rocket, in a simple and intuitive way, allows you to identify, retrieve and quickly display single images, video, pdf files and diagnostic studies.

HIGHEST EFFICIENCY: SINGLE DATA ENTRY

Rocket is integrated with the main PMS software for veterinary market. Patient and customer data are entered once and shared with the diagnostic images, for better efficiency and productivity.



MANAGE AND SHARE DATA & IMAGES

The Rocket platform uses the most advanced technologies in Cloud, allowing access to data and images "anytime, anywhere".

IMAGES ALWAYS ON

Your images can be read on any device (PC, tablet, smartphone) through main popular viewers (OsiriX, Horos, etc.). Rocket is a web application that can be used without limits on most devices, for your unlimited access

ABSOLUTELY SAFE

Encrypted protocols and certificates, daily backup and "Lossless data compression systems" limit critical data loss and optimize storage in your Cloud space.

SIMPLE AND INTUITIVE, VET MARKET NATIVE

The Rocket Platform has been developed taking into consideration veterinarians' request, in order to guarantee maximum efficiency. Everything is simple, intuitive and does not require expensive hardware and software infrastructure.



TELEMEDICINE - Starting 2018 in the UAE

Thanks to Rocket Telemedicine's platform, the Vets can request for a second opinion to a qualified specialists network

QUALIFIED VET EXPERTS NETWORK

Rocket puts you in touch with an international team of veterinarians, with specialized skills, to provide precise diagnoses to increasingly demanding customers.

SHARING IN A CLICK

Rocket Telemedicine Platform makes simple and intuitive the second opinion request, both from your own PACS or through the web, without additional hardware or software tools.

TELEMEDICINE SERVICES

- Diagnostic imaging
- cardiology
- ophthalmology
- oncology
- dental
- orthopedics
- dermatology



ADDED VALUE SERVICES

Rocket platform is designed with care to include progressive new services and technologies



Vantage Plus Keeler (Not available in and)

The LED cooler color temperature provides brighter illumination, longer battery life, and freedom from purchasing bulbs. The LED life expectancy is up to 10,000 hours.

Clinically, the superior optics combined with the LED illumination could provide greater detail, allowing you to find retinal pathology that was not visible with the xenon bulb BIO's.

Large Pupil
When looking through a large fully dilated pupil the optics are separate and the light source remains in the upper position, achieving maximum stereopsis.



Intermediate Pupil
The viewing optics and light sources are in a 'mid position' for maximum stereopsis.



Small Pupil
When looking through a small pupil the viewing optics and light source are converged to allow you to view the retina through the smallest pupils stereoscopically.



Longest life, brightest, better detail



New Slimline Lithium Polymer battery weighs less than 53 grams



30% brighter than standard bulbs



Combined LED and Lithium Polymer battery can provide up to 6 hours of use on a single charge

Practitioner Ophthalmoscope 3.6V Keeler

Filters:



codice 00003466 - E006116

Mini lithium charger for 3.6V handle



codice 00003468 - E006117



CHARACTERISTICS

- Head and handle
- Lens range up +40D to -25D
- Filters: Red free - Blue - Slit
- Rapid chargement in 2 hours

Finhoff transilluminator 3.6V (head only)



codice 00003467 - E006118



PSL Classic Portable Slit Lamp Keeler

code 00002227 - E006109

Precision machined aluminium chassis.

Advanced optics, 10x & 16x magnifications Top quality multi layered glass is crafted into our Keeler multi-element and multi-layer coated optical system to give maximum performance.

Big Slit Lamp features, Portable usability Unique features such as the fixation targets, and the 1mm square light patch for assessing a/c flare set the new standard for Portable Slit Lamps.



Filter wheel
Red free, Blue, Neutral
density (0.8) and Clear



ALSO AVAILABLE

- Psl spare battery
codice 00002478 - E006110
- Psl led bulb
codice 00002481 - E006111



Slit wheel



Mini Loupes Keeler

Mini Loupes are designed to be ultra light and comfortable with minimal compromise in field of view. Absolute comfort is our achievement; excellent peripheral vision is the added benefit of our slim design.



CHARACTERISTICS

- **Work distance from 42 to 46 cm**
- **Magnification from 2.0x to 5.5x**
- **34000 LUX LED power**



ALSO AVAILABLE

- Mounting system regular fit/
standard temple black
codice 00002382 - E006112
- Headband Keeler for Loupes
codice 00002230 - E006113
- New k-led with 1 battery and
charger tray
codice 00002231 - E006114
- Xl advantage loupe 3.5X/42cm
codice 00002972 - E006115



SUITABLE FOR:

- Ophthalmology
- Orthopaedics
- ENT
- Urology
- Obstetrics & Gynaecology
- General Dentistry



FIGHT FOR ANIMAL RIGHTS

*"Animals can communicate quite well. And they do.
And generally speaking, they are ignored."*

Alice Walker



FoschiLaser D5-810

Made in Italy 

Its diode technology is used optimally in Pain Therapy and Biostimulation and in soft tissue Surgery.



TECHNICAL SPECIFICATIONS

- Wave length: 810 nm
- Frequency: up to 25 kHz
- Maximum power: 5 W
(from 0.10 W to 5 W at intervals of 100 mW)
- Mode: continuous emission (CW) or pulsed emission
- Fibre: 300 μ m (200 μ m/600 μ m optional)
- Dimensions/weight: 20 x 15 x 12 cm



THE PACKAGE CONTAINS

- 1 surgical handpiece
- 1 therapeutic handpiece
- 1 300 μ m optical fibre
- 2 eye protections
- 20 single-use tips
- 10 autoclavable tips
- 1 foot pedal



code **02711646 - E005794**



VETERINARY SOFTWARE

- Direct operational selection via colour touch screen
- Clinical protocols already set for major diseases
- Possibility to set customised parameters
- Updates via USB port

WHY CHOOSE FOSCHILASER

1. For simple and intuitive software, dedicated to Veterinary Medicine, with customizable parameters
2. To have surgery, pain therapy and biostimulation in one machine
3. For quick returns of the investment thanks to the many applications allowed
4. For the complete safety of the operator
5. Because the technology was developed in Italy ensuring high quality



Foschi F160HF Radio-scalpel

for Monopolar and Bipolar Surgery

Made in Italy

Foschi F160HF is an **RF electrosurgical unit (radio-scalpel)** capable of supplying current suitable for cuts, coagulating cuts, coagulation in monopolar mode and coagulation in bipolar mode.

- Pure cut
- Coagulating cut
- Deep coagulation in absence of coagulation
- Superficial coagulation
- Bipolar coagulation
- Cut with reduced production of necrosis
- Operating times programmable in thousandths



code **00500807 - E005795**



CHARACTERISTICS

- Bipolar coagulation with automatic activation/deactivation
- Automatic impedance control (bipolar coagulation - autostart/autostop)
- Pulse interval repetition
- Timed emission (10 msec - 30 sec)
- Power control via monopole-encoder
- Adjustable sound emission
- Self-diagnosis of failures
- Control of radiated power
- Control of neutral electrode contact - patient
- Possibility to connect bipartite electrodes



With the following accessories included

- Sterilisable handpiece with buttons
- Handpiece for microsurgery
- Kit of assorted electrodes (10 pcs)
- Needles for microsurgery/hair removal (10 pcs)
- Blade electrode (3 pcs)
- Needle electrode (3 pcs)
- Ball electrode (3 pcs)
- Neutral electrode connection cable
- Steel neutral electrode
- Bipartite neutral single-use electrode (2 pcs)
- Neutral single-use electrode (2 pcs)
- Single airtight pedal
- 5 m power cable



AVAILABLE ON REQUEST: THE KIT FOR BIPOLAR OPERATION which includes:

kit code **02700009 - E005796**

- Bipolar Cable (3 m)
- Straight Bipolar Forceps (tips 2 mm)



Bipolar Cable
(3 m)



Straight Bipolar Forceps
(tips 2 mm)



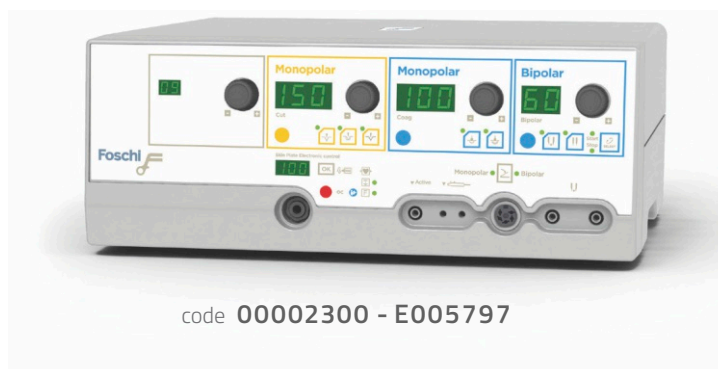
Foschi F200 electro-scalpel

for Monopolar and Bipolar Surgery

Made in Italy 

Allows to execute surgical minimally invasive procedure of resection, evaporation and coagulation. Foschi F200 is a high frequency electrosurgical equipment which is suitable to light and medium surgery.

- Pure cut
- Coagulating cut
- Deep coagulation in absence of coagulation
- Superficial coagulation
- Bipolar coagulation
- Microcontroller of the operating functions
- Supply from handpiece or pedal



EQUIPMENT



CHARACTERISTICS

Maximum output power CUT	200 W - 250 Ω
Maximum output power ENHANCED Ω	120W - 250 Ω
Maximum output power BLEND	120W - 200 Ω
Maximum output power FORCED COAG	150 W - 150 Ω
Maximum output power SOFT COAG	90 W - 100 Ω
Maximum output power BIPOLAR COAG	80 W - 100 Ω

Working frequency	600 kHz
Patient circuit	F
Mains voltage	115 – 230 Vac
Mains frequency	50-60 Hz
Electrical input power	350 VA
Weight Kgs	6
Size WxHxD mm	370x144x319



With the following accessories included

- Reusable handle with switches
- Assorted electrodes (10 pcs)
- Blade electrode 7 cm (3 pcs)
- Needle electrode 7 cm (3 pcs)
- Ball electrode 6 cm (3 pcs)
- Cable for neutral electrode
- Steel neutral electrode
- Disposable split neutral electrode (2 pcs)
- Waterproof foot switch
- Power supply cable 5mt



AVAILABLE ON REQUEST: the kit for bipolar OPERATION AT THE INTRODUCTORY PRICE which includes:

kit code 02700008 - E005798

- Adapter for bipolar cable
- Bipolar Cable (3 m)
- Straight Bipolar Forceps (tips 2 mm)



Adapter for
Bipolar Cable



Bipolar Cable
(3 m)



Straight Bipolar Forceps
(tips 2mm)



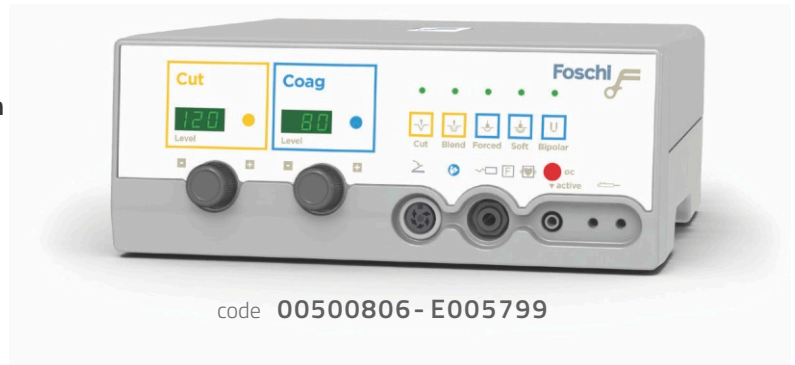
Foschi F120 electro-scalpel

for Monopolar and Bipolar Surgery

Made in Italy 

The Foschi F120 electro-scalpel is an electrosurgical unit capable of supplying current suitable for cuts, coagulating cuts, coagulation in monopolar mode and coagulation in bipolar mode, using neutral electrodes, single or bipartite.

- Pure cut
- Coagulating cut
- Deep coagulation in absence of coagulation
- Superficial coagulation
- Bipolar coagulation
- Microcontroller of the operating functions
- Supply from handpiece or pedal



CHARACTERISTICS

- Digital power display
- Sound emission adjustable in 5 steps (from 55 to 75 dBA)
- Self-diagnosis of failures
- Control of accuracy of radiated power
- Possibility to connect bipartite electrodes
- Storage of last settings used
- Neutral electrode
- Duty Cycle (action/pause) in seconds
- Pedal/manual activation
- Defibrillator protection
- Equipotential plug
- ABS container



With the following accessories included:

- Sterilisable handpiece with buttons
- Kit of assorted electrodes (10 pcs)
- Neutral electrode connection cable
- Steel neutral electrode
- Single airtight pedal
- 5 m power cable



AVAILABLE ON REQUEST: the kit for bipolar OPERATION AT THE INTRODUCTORY PRICE which includes:

kit code 02700008 - E005798

- Adapter for bipolar cable
- Bipolar Cable (3 m)
- Straight Bipolar Forceps (tips 2 mm)





Diamx VET

Diathermy in veterinary medicine

Diathermy is an innovative, non invasive physical therapy that leads to a heat generation within the body.

An ion flow is created inside the treated tissues due to an electromagnetic field. The involved cells are thus stimulated to reactivate their metabolism, with subsequent increased energy and therefore temperature variation. The capacitive mode is used to treat mainly the soft tissues like muscles, tendons and the more superficial structures, whilst the resistive mode is used to act primarily on bones, joints and on the more deep structures.



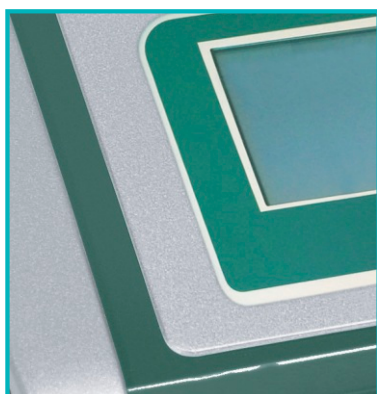
PRODUCT CONFIGURATION

- Main unit
- 1 Return Electrode
- 1 Capacitive application probe
- 1 Resistive application probe
- 1 Capacitive bipolar probe (for small animal version)
- 4 Capacitive electrodes
- 4 Resistive electrodes
- 1 Capacitive Static Electrode (for the horse version)
- 1 Resistive Static Electrode (for the horse version)
- Elastic Bands
- 1 250 ml Conductive cream Tubes



CHARACTERISTICS

- Dimensions 120 X 400 X 300 mm
- Weight - 7Kg
- Operating Frequencies 0,45 Mhz-0,68 Mhz $\pm 10\%$
- Power 100 - 230 Vac - 300 Va
- Control Menu assisted through LCD Touch-Screen



code **00002352 - E005801** Horse Version

code **00001784 - E005802** Small Animal Version



Pulse Oximetry M800 VET-S1 with SpO₂



STANDARD CONFIGURATION

- 2.4" LCD colour display
- SpO₂ technology blt 0-100%
- Heart rate 25-250 bpm
- Charger not included



AVAILABLE ON REQUEST

- Rechargeable battery + Charger

code **00721395 - E006108**



code **00712016 - E005812**

Pulse Oximetry M800 VET-S1 with 3-LEAD ECG



STANDARD CONFIGURATION

- 2.4" LCD colour display
- SpO₂ technology blt 0-100%
- Heart rate 25-250 bpm
- 3-LEAD ECG
- Charger not included



AVAILABLE ON REQUEST

- Rechargeable battery + Charger

code **00721395 - E006108**



code **00721341 - E005813**



O₂ Concentrator 0-8 LT/MIN

code **02721625 - E005815**

The Oxygen concentrator is a medical device capable of retaining Nitrogen and enriching the Oxygen content of the ambient air. The product, enriched with Oxygen, then passes through a bacterial filter before going to the patient.

UNIQUE

The O₂ concentrator is extremely silent and its price is the lowest on the market!



CHARACTERISTICS

- Flow: from 0 to 8 l/min
- Oxygen concentration: 93% ± 3%
- Maximum output pressure: 0.04-0.07 Mpa
- Power supply: AC230V ± 10% - 50 Hz ± 1
- Noise: ≤50 dB max
- Weight: 27 kg
- Dimensions (d x l x h): 365 x 375 x 600 mm
- Electrical category: Class II type B
- Product category: Class II A

Mayo serving trolley - Foschi

with raising and extractable inox level

code **00554078 - E005816**

CHARACTERISTICS

- Dimensions: 73,5 x 47,5 cm
- Height: 70/120H



Bridge serving trolley - Foschi

code **00572034 - E005817**

CHARACTERISTICS

- Dimensions: 76 x 42 x 90 / 140 h





Electrocardiograph: 1 channel

code 00709390 - E005867



CHARACTERISTICS OF THE PRODUCT

- Large 3.8" backlit display
- Derivations: 12
- Modes: manual, automatic, analysis
- Printing channels 1
- Memory: 15 ECG exams
- Printer: H50 mm on graph paper
- Power supply: mains and rechargeable lithium battery with an autonomy of 2 hours of use
- Built-in ECG stimulator
- Connection to the PC via USB



Electrocardiograph: 3 channels



CHARACTERISTICS OF THE PRODUCT

- Backlit 5.7" liquid crystal display
- Derivations: 12
- Interpretation of the electrocardiogram complete with measurements, with a specific program for dogs and cats
- Modes: manual, automatic, analysis
- Possibility to enter the clinical information of the animal
- Help functions accessible by the user
- Memory: 15 ECG exams
- Power supply: mains and rechargeable lithium battery with an autonomy of 2 hours of use
- Printer: H80 mm on graph paper
- Built-in ECG stimulator
- Connection to the PC via USB port



code 00709392 - E005868

Electrocardiograph: 6 channels



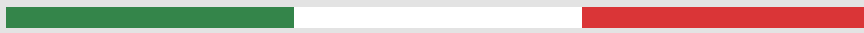
CHARACTERISTICS OF THE PRODUCT

- Backlit 5.7" liquid crystal display
- Interpretation of the electrocardiogram complete with measurements
- Modes: manual, automatic, analysis
- Help functions accessible by the user
- Memory: 150 ECG exams
- Power supply: mains and rechargeable lithium battery with an autonomy of 2 hours of use
- Printer: H112 mm on graph paper
- Built-in ECG stimulator
- Connection to the PC via RS232 serial interface, USB and wireless (optional)
- Internal accumulators recharge time: 18 hours 100%



code 00709393 - E005869

Service.
Quality.
Innovation.



Since 1905



ALL THE BEST BRANDS

Eurovets is dedicated to providing your clinic with all your veterinary needs. We offer a comprehensive product range at highly competitive prices for small and large animal practices, stables and wholesale outlets. This include biological, diagnostics, nutritionals, medicines, equipment, consumables and more.

Contact us today

Eurovets Veterinary Suppliers

Tel: +971 4 434 2436 **OR** Technical Support Team contact: +971 56 880 9212

E-mail: orders@eurovetworld.com

Address: Warehouse A6, Dubai Science Park, Dubailand, Al Barsha South,
Dubai, United Arab Emirates



www.eurovetworld.com

