



CATALOGUE



YOUR COMPLETE VETERINARY SUPPLY AND SUPPORT SOLUTION

VETERINARY SUPPLIERS



ABOUT EUROVETS

EUROVETS IS YOUR COMPLETE VETERINARY SUPPLY & SUPPORT SOLUTION

Eurovets, established in 2001 has become the Middle East's foremost supplier of some of the world's best known veterinary products to veterinary clinics throughout the UAE.

We represent leading multi-national brands in nutrition, veterinary equipment, medicines and consumables for companion, -equine and production animals. In addition to the traditional wholesaling, Eurovets provides warehousing, distribution, marketing and sales resources in order to support the product in the region. We also offer a host of value-added services such as maintenance and support for all equipment supplied; service-based offerings such as Spectrum allergy testing; even end-to-end IT solutions for clinics.

Eurovets supports Continued Professional Development, imparting knowledge of the latest developments in the field to veterinary professionals through high-powered seminars. We pride ourselves on our professional approach and offer vet specialized product advice where required.

In conclusion our mission is to not only deliver excellent products but to be committed to deliver exceptional customer service to all veterinary clinics and pet retailers in the region. Eurovets YOUR headquarters for veterinary supply and support, and a proud distributor of the Foschi brand.



ABOUT FOSCHI

Foschi is part of the Demas Group, which is an Italian Company founded in 1968 from the Foglietti Family.

They are committed to:

- Leadership and excellence in delivering quality healthcare veterinary products, services and knowledge;
- Educating and training veterinarians and other veterinary healthcare professionals;
- Striving to improve the health status of animals.

Foschi's division ARIA (Advanced Resources for Imaging and Application) is dedicated to the radiology market for equine and small animals. They supply direct and computed radiography solutions, software, accessories for DR panels and digital radiology units.

INDEX



Consumables

6



Ophtalmology

38



Digital X-Ray

12



Lighting

44



Endoscopy

24



Equipment

46



Orthopaedics

30



Technical
Furnishings

60

ALL YOUR VET TOOLS
IN ONE PLACE



QUALITY & TECHNOLOGICAL INNOVATION

*Selected products
and wide range
of high-end solutions*



A COMPLETE OFFER

*Products and solutions
for your business*



CUSTOMER SERVICE

*Pre and after sale
technical and operating support*



SIMPLICITY AND RELIABILITY

*One partner
for all your business needs*





CONSUMABLES



CONSUMABLES

FOQUS
FOSCHI QUALITY SOLUTIONS

SUTURES



The veterinary medical consumable products that you use in daily practice can make a huge difference to the quality of care you are able to deliver. Our FOQUS line provides a range of everyday high-quality veterinary consumables at a great value price, giving you complete confidence in the safety and security in the demanding veterinary environment.

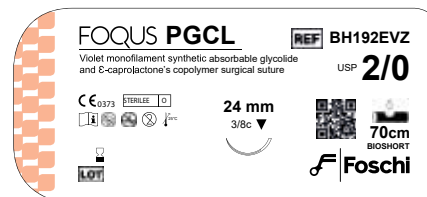
PGCL

TPOLOGY: Monofilament absorbable synthetic suture
COLOR: Violet or undyed

MOLECULE: Copolymer composed of 75% glycolide and 25% ϵ -caprolactone (PGA-PCL)
COATING TYPE: Uncoated

PACKAGE 12 PIECES

CODE	DESCRIPTION
00005737	USP 2/0 Cutting edge, 3/8 Circle, 24 mm 70 cm Undyed
00005738	USP 2/0 Cutting edge, 3/8 Circle 24 mm 70 cm Violet
00005735	USP 2/0 Round body, 1/2 Circle 26 mm 70 cm Violet
00005740	USP 2/0 Round body, 1/2 Circle 30 mm 70 cm Violet
00005742	USP 3/0 Round body, 1/2 Circle 22 mm 70 cm Violet
00005739	USP 3/0 Cutting edge, 3/8 Circle 24 mm 70 cm Violet
00005736	USP 3/0 Round body, 1/2 Circle 26 mm 70 cm Violet
00005741	USP 3/0 Round body, 1/2 Circle 30 mm 70 cm Violet
00006473	USP 4/0 Round body, 1/2 Circle 22 mm 70 cm Viola
00006474	USP 4/0 Round body, 1/2 Circle 20 mm 70 cm Viola
00006475	USP 5/0 Round body, 1/2 Circle 17 mm 70 cm Viola



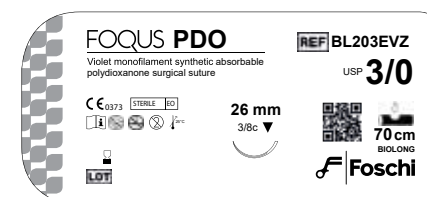
PDO

TPOLOGY: Monofilament absorbable synthetic suture
COLOR: Violet

MOLECULE: Polidioxanone
COATING TYPE: Uncoated

PACKAGE 12 PIECES

CODE	DESCRIPTION
00005743	USP 0 Round body, 1/2 Circle 26 mm 70 cm Violet
00005752	USP 0 Round body, 1/2 Circle 36 mm 70 cm Violet
00005749	USP 2/0 Cutting edge, 3/8 Circle 26 mm 70 cm Violet
00005744	USP 2/0 Round body, 1/2 Circle 26 mm 70 cm Violet
00005751	USP 2/0 Round body, 1/2 Circle 30 mm 70 cm Violet
00005747	USP 3/0 Cutting edge, 3/8 Circle 18 mm 70 cm Violet
00005746	USP 3/0 Cutting edge, 3/8 Circle 24 mm 70 cm Violet
00005750	USP 3/0 Cutting edge, 3/8 Circle 26 mm 70 cm Violet
00005745	USP 3/0 Round body, Tapercut, 1/2 Circle 26 mm 70 cm Violet
00005753	USP 3/0 Round body, Tapercut 1/2 Circle 26 mm 70 cm Violet
00005748	USP 4/0 Cutting edge, 3/8 Circle 18 mm 70 cm Violet



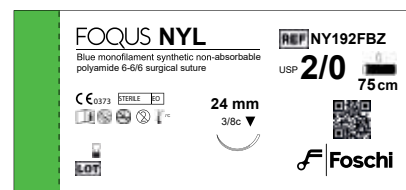
NYLON

TYPOLGY: Monofilament non-absorbable synthetic suture
COLOR: Blue

MOLECULE: Polyamide 6 or Polyamide 6-6
COATING TYPE: Uncoated

PACKAGE 12 PIECES

CODE	DESCRIPTION
00005781	USP 0 Cutting edge 3/8 Circle 30 mm 75 cm Blue
00005777	USP 2/0 Cutting edge, 3/8 Circle 24 mm 75 cm Blue
00005780	USP 2/0 Cutting edge, 3/8 Circle 26 mm 75 cm Blue
00005778	USP 3/0 Cutting edge, 3/8 Circle 24 mm 75 cm Blue
00005779	USP 4/0 Cutting edge, 3/8 Circle 18 mm 45 cm Blue

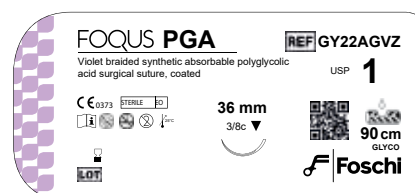
**PGA**

TYPOLGY: Braided and coated absorbable synthetic suture
COLOR: Violet or undyed (beige)

MOLECULE: Polyglycolic acid (PGA)
COATING TYPE: Polycaprolactone and calcium stearate

PACKAGE 12 PIECES

CODE	DESCRIPTION
00005787	USP 2 Mf. Braided Reel Sterile 250 Cm Violet
00005782	USP 1 Mf. Braided Reel Sterile 150 Cm Violet
00005769	USP 1 Cutting edge 3/8 Circle 36 mm 90 cm Violet
00005774	USP 0 Cutting edge. 1/2 Circle 26 mm 70 cm Violet
00005767	USP 0 Cutting edge 3/8 Circle 30 mm 70 cm Violet
00005754	USP 0 Round body 1/2 Circle 26 mm 70 cm Violet
00005771	USP 0 Round body 1/2 Circle 30 mm 70 cm Violet
00005783	USP 0 Mf. Braided Reel Sterile 250 cm Violet
00005773	USP 2/0 Cutting edge 1/2 Circle 22 mm 70 cm Violet
00005760	USP 2/0 Cutting edge 3/8 Circle 24 mm 70 cm Violet
00005764	USP 2/0 Cutting edge 3/8 Circle 26 mm 70 cm Undyed
00005791	USP 2/0 Cutting edge 3/8 Circle 26 mm 70 cm Violet
00005768	USP 2/0 Cutting edge 3/8 Circle 30 mm 70 cm Violet
00005776	USP 2/0 Cutting edge reinf 1/2 Circle 36 mm 70 cm Violet
00005757	USP 2/0 Round body 1/2 Circle 26 mm 70 cm Violet
00005772	USP 2/0 Round body 1/2 Circle 30 mm 70 cm Violet
00005784	USP 2/0 Mf. Braided Reel Sterile 250 cm Violet
00005762	USP 3/0 Cutting edge 3/8 Circle 18 mm 70 cm Violet
00005761	USP 3/0 Cutting edge 3/8 Circle 24 mm 70 cm Violet
00005765	USP 3/0 Cutting edge 3/8 Circle 26 mm 70 cm Violet
00005775	USP 3/0 Cutting edge 1/2 Circle 26 mm 70 cm Violet
00005770	USP 3/0 Round body 1/2 Circle 22 mm 70 cm Violet
00005763	USP 3/0 Round body 3/8 Circle 24 mm 70 cm Violet
00005758	USP 3/0 Round body 1/2 Circle 26 mm 70 cm Violet
00005759	USP 4/0 Round body 1/2 Circle 26 mm 70 cm Violet



FOQUS
FOSCHI QUALITY SOLUTIONS

GLOVES



AQL
0.65

AQL – a guarantee for quality. The Acceptable Quality Level (AQL) indicates the number of defects that may be accepted in a production lot of disposable gloves. The lower the AQL value is, the lower are the chances of having a defective glove. Average values of AQL on the market are between 1.5 and 4.0. All FOQUS gloves are certified with an AQL 0.65, meaning they guarantee the highest quality and a reduced risk of exposure.

LATEX GLOVES

POWDERED

CODE	DESCRIPTION	QUANTITY
61620100	Size XS	100 Pcs
61620101	Size S	100 Pcs
61620102	Size M	100 Pcs
61620103	Size L	100 Pcs
61620104	Size XL	100 Pcs



AQL
0.65

POWDER FREE

CODE	DESCRIPTION	QUANTITY
61629903	Size XS	100 Pcs
61629900	Size S	100 Pcs
61629901	Size M	100 Pcs
61629902	Size L	100 Pcs
61623004	Size XL	100 Pcs



STERILE SURGICAL GLOVES

POWDERED

CODE	DESCRIPTION	QUANTITY
61624002	Size 6	50 Pcs
61624003	Size 6,5	50 Pcs
61624004	Size 7	50 Pcs
61624005	Size 7,5	50 Pcs
61624006	Size 8	50 Pcs
61624007	Size 8,5	50 Pcs
61624008	Size 9	50 Pcs



AQL
0.65



POWDER FREE

CODE	DESCRIPTION	QUANTITY
61625501	Size 6	50 Pcs
61625502	Size 6,5	50 Pcs
61625503	Size 7	50 Pcs
61625504	Size 7,5	50 Pcs
61625505	Size 8	50 Pcs
61625506	Size 8,5	50 Pcs
61625507	Size 9	50 Pcs



AQL 0.65



FOQUS
FOSCHI QUALITY SOLUTIONS

SYRINGES

CODE	DESCRIPTION	QUANTITY
00011030	1 MI Central Needle 25 G (0,50mmx16mm)	100 Pcs
00111025	1 MI Central Needle 26 G (0,45mmx16mm)	100 Pcs
00111020	1 MI Central Needle 27 G (0,40mmx13mm)	100 Pcs
00251045	2,5 MI Central Needle 22 G (0,70mmx32mm)	100 Pcs
00511045	5 MI Central Needle 22 G (0,70mmx32mm)	100 Pcs
01001045	10 MI Central Needle 22 G (0,70mmx32mm)	100 Pcs



CODE	DESCRIPTION	QUANTITY
02002065	20ml Eccentric Needle 18g (1,20mmx38mm)	50 Pcs
30020000	30ml Without Needle Eccentric Luer Cone	40 Pcs
30030000	30ml Without Needle Luer Lock Cone	40 Pcs
05002000	50ml Without Needle Eccentric Luer Cone	25 Pcs
05003000	50ml Without Needle Luer Lock Cone	25 Pcs
05000000	50/60ml Without Needle Catheter Cone	25 Pcs



TNT SPUNLACE ROLL

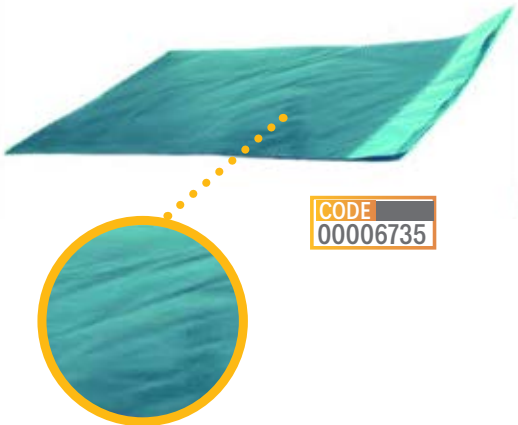


FEATURES

- Ideal for surgical field
- Resistant material

CODE	DESCRIPTION	QUANTITY
00006733	100x50 mt	1 Pcs
00006734	120x50 mt	1 Pcs

DECONTAMINATION MAT



CODE
00006735

FOQUS decontamination mat is a multilayer decontaminating mat used in all environments that require the total absence of contaminating agents and the preservation of high hygiene levels."



FEATURES

- Antibacterial adhesive
- 30 numbered disposable layers
- Easy and safe removal of used layers without risk of ripping or hand contact
- Dimension 115x60 cm

STANDING AUTOMATIC GEL DISPENSER



CODE
00008282



FEATURES

- **Liquid Gel Dispenser 1 Lt:**
 - Dispenser for liquid sanitizing gel for hands, entirely in abs with removable key lock, photocell and automatic dispensing 30 numbered disposable layers
- **Stand for gel dispenser:**
 - 1,5 mm thick powder coated metal stand for GEL dispensers. dim. 130x30x13 cm



DIGITAL X-RAY

WITHOUT ARIA

POWERED BY ARIA

RADIOLOGY, SMARTER THAN EVER

DIGITAL X-RAY



A COMPLETE PORTFOLIO OF RADIOLOGY PRODUCTS DESIGNED AND DEVELOPED IN ITALY BY FOSCHI

ARIA stands for “Advanced Resources for Images and Applications” and is a complete radiography product line.

Digital Radiography solutions are as individual as veterinary practices, and this is why ARIA offers a wide range of solutions for all your X-ray needs, from Computed Radiography (CR) to Digital Radiography (DR) and Digital image management.

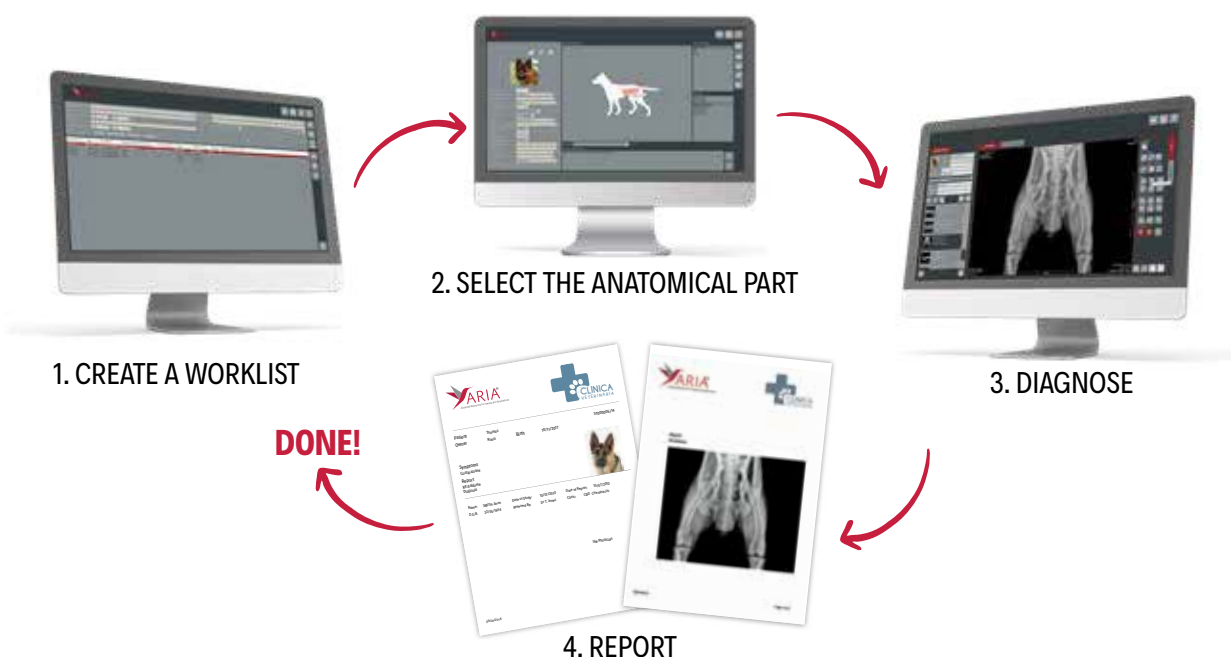
HARDWARE: all of our hardware is designed with the manufacturer or sourced from the world’s leading imaging providers. It is reliable, but in case of breakdown we offer an extensive technical service and different maintenance options.

SOFTWARE: the center of all ARIA solutions is the inhouse developed software which allows the Vet to control, manage and archive all processes related to the digital X-ray processes. The ARIA software was developed with Vets for the Vet, in order to offer a technology that is built to perform in the demanding environment of the Veterinary professionals.

BE SMART. BE ARIA®

- MORE THAN 1000 OPTIMIZATION ALGORITHMS
- INTEGRATED REPORTING SYSTEM
- STARTING THE SOFTWARE IN LESS THAN 3 SECONDS
- FUNCTIONS STANDARD DICOM
- DEDICATED VETERINARY MEASUREMENTS
- NEW RADIOGRAPHIC REGISTER

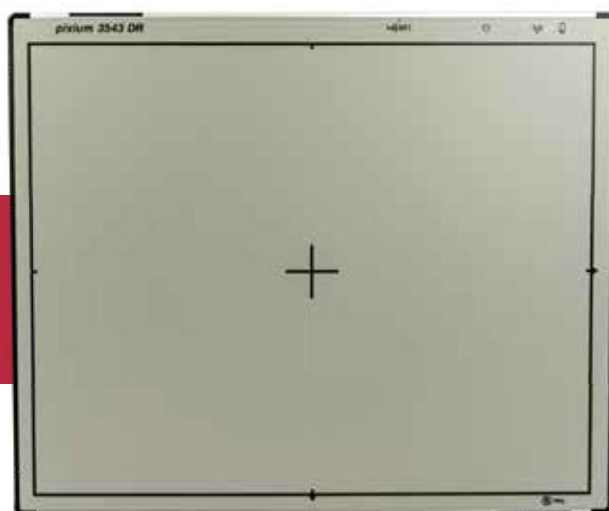
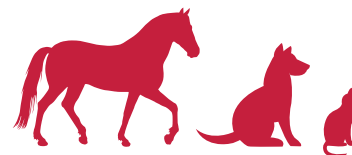
YOUR IMAGES IN JUST 3 CLICKS



DR SOLUTIONS

FLAT PANEL ARIA 3543 DR

OPTIMAL ERGONOMICS & UNLIMITED FLEXIBILITY



THALES

Made in UE

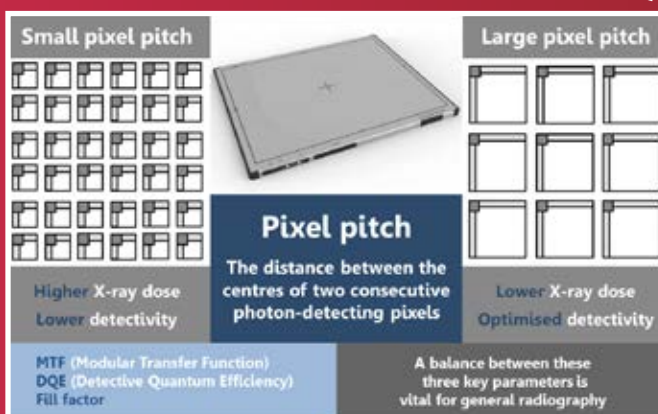
The **ARIA DR** product range is synonymous with high performance and reduced exposure and the latest product in the line, the portable **ARIA 3543 DR**, features the most state-of-the-art performance levels of any portable flat panel detectors on the market.

Produced by the Leading French Company, **THALES**, this flat panel weighs only 3,1 kg and features a unique borderless design for **extreme mobility** and flexibility. This last generation panel can be used either in wired mode, inside the bucky tray, but is also wifi-enabled and can therefore be removed to ensure versatility for all exam types and maximise your workflow from the x-ray room, to the surgery room or ICU.

With its 35x43 “**cassette-size**”, the detector fits into any standard bucky tray on the market. When positioned inside the bucky tray, the panel operates in wired mode through the magnetic power cable, while charging the battery. In case of disconnection of the magnetic cable, the panel self-configures in Wi-Fi mode for use in other environments.

Code	00005642
Detection Area	35x43 cm
Scintillator	CsI
Connection	Wi-Fi e Cable
Dimensions (W x L x D)	383.5 x 459.5 x 15.0 mm
Pixel	2156x2664
Pixel Pitch	160 µm
AD conversion	16 bit
Dqe @ 0 Lp/Mm_2 µgy	> 70%
Acquisition time	< 3 sec
Storage mode	YES
Weight	3,1 kg

PIXEL PITCH OPTIMIZATION FOR AN HIGHEST DQE



FLAT PANEL ARIA 2430 DR

10X12" WIRELESS



Made in UE



Code	20005283
Detection Area	24x30 cm
Scintillator	CsI
Connection	Wi-Fi
Dimensions (W x L x D)	327.5 x 267.5 x 15.6 mm
Pixel	1560 x 1920
Pixel Pitch	148 µm
AD conversion	16 bit
Dqe @ 0 Lp/Mm_2 µgy	> 66%
Acquisition time	<3 sec
Storage mode	YES
Weight	1,6 kg

ARIA 2430 DR CONFIGURATION includes:

- Tablet 15" with Ultra HD resolution Surface Pro Book powered by Microsoft
- High capacity long life battery – 11 hours
- Spare high capacity long life battery
- Router with 5 GHz Wi-Fi and 4G capability
- Ultra light protection with handle for flat panel



ARIA 8020 HF

MEETING NEW EXPECTATIONS FOR MOBILE EQUINE RADIOLOGY

The **ARIA 8020 portable generator** is the ideal solution to meet the needs of the equine practitioner.

This portable generator combines an extremely low weight with optimum handling.

The high power output of 1,6 kW guarantee high performance with stifle, cervical and spine's images of the horse.

Code	00003855
Output	20mA@50-80kV (0.02 – 0.10 sec.) 15mA@50-80kV (0.11 – 2.0 sec.)
Timer	0.02-2.00 sec
AC Input	230V (50/60Hz)
Size	W 182mm × H 157mm × L 299mm
Focal Spot	0.8mm
Total filtration	3.0mm Al equivalent
Memory storage	5 presets
Laser pointer	Dual laser
Weight	6.40 kgs



CR SOLUTIONS

CR VITA FLEX

DR Imaging Made Affordable: upgrade to the Digital Detector designed with a Vet's needs in mind.

CARESTREAM Vita Flex CR Systems are designed for small-to-midsize veterinary hospitals, clinics and practices that need compact digital solutions at an affordable price. With two options for throughput speed, Vita computed radiography systems offer in-house, high-quality digital imaging to fit your workflow. The flexible orientation makes it perfect for small spaces in offices or in mobile settings.

FEATURES

- Weight: 25 kg
- Dimensions (W x D x H): 68 x 34 x 45 cm
- Overall Size: 0,30 mq
- Resolution: 11,6 px/mm
- Boot: 15 seconds

NOISE LEVEL

- Noise Level while Operating: below 58 dBA
- Noise Level during Loading Period: below 70 dBA

ERASE SPECIFICATIONS

- Erase Range: $0 < 40$ mr
- Erase Time: $7 < 80$ sec.



SELF-REPAIR FEATURE

- Fast self-repair maximizes uptime and budget
- Fix it yourself with three easy, self-replaceable units
- Or, call for full-service from a certified technician



SUPPORTED CASSETTE SIZES AND SPECIFICATIONS

CASSETTE SIZE	CODE	PLATE SIZE		PIXEL PITCH
		X	Y	
35 x 43 cm	00721143	354	430	86 μ m
24 x 30 cm	00721141	252	304	86
20 x 25 cm	00721112	220	252	86



FlexFit Means There Are Two Ways to Save Space.

Vita Flex's benefits for small offices don't end with its compact footprint. You can find the fit that's best for you. Vita Flex fits on a tabletop, desktop, sitting on the floor or in the back of a van. You can position it in a traditional horizontal configuration, or set it up vertically if that's a better fit for your space.

Now that's flexibility.



CODE
01069350

ARIA 450 GENERATOR

with 4-way floating table

 *Produced and designed in Italy by Foschi*

From our passion and continuous research in the Imaging Veterinary Field, we have developed the newest product of the ARIA range: the ARIA 450 Radiographic Generator. The ARIA 450 is the first generator produced in Italy by Foschi in collaboration with the major imaging providers. A perfect blend of Italian technology and design, with high power and stability, able to face the demanding needs of today's veterinary practices.

The 32 kW generator is able to produce a maximum output of 450 mA and a power of 125 kV. The new inverter with working frequencies from 100 kHz is able to guarantee stability and reliability of the x-ray emission delivering highest image quality, while avoiding repetitions and unnecessary exposure of the patient.

The graphical user interface has been revisited and is even more intuitive and simple. You can choose between over 1,000 presets for 11 different species: by choosing the anatomical width or the size of the breed, ARIA will load the ideal exposure for the highest image quality with the lowest dose.

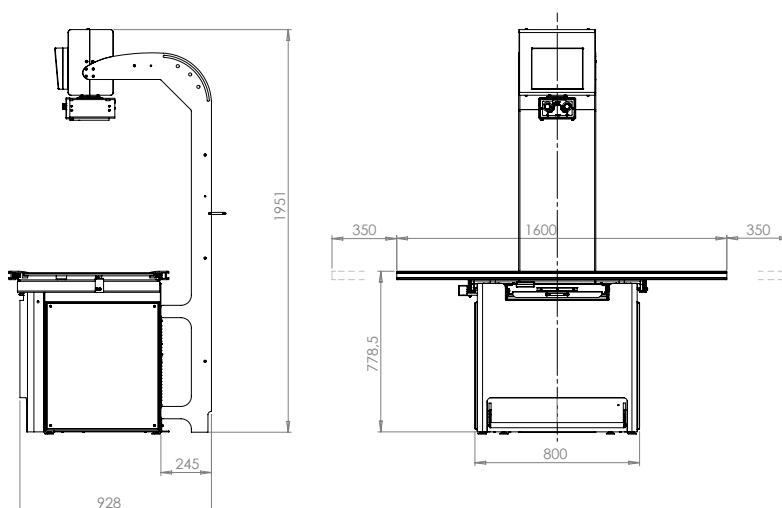


TECHNICAL DETAILS

- Max Current 450 mA
- Max Voltage 125 kV
- Max Power 32 kW
- Working Frequency 100 kHz
- kV Range 40 – 125 (1 kV step)
- mAs Range 0,5 – 150
- Focal Spot 0,6 / 1,3 mm
- Touch Screen with Anatomical Preset
- Doses for 11 Different Species
- More than 1000 Preset
- 2 and 3 Points Technique
- Thickness Dose Manager
- Compact Collimator with Low Leakage
- 4 Way Floating Table
- Quiet Mechanical Brake

CODE
00004659

X-RAY GENERATOR
ARIA 450 – 450/125 H.F.



ACCESSORIES

Lead Aprons 0.50 mm

CODE	DESCRIPTION
00721338	0.50 mm lead equivalence – 120 cm



Thyroid Protector

CODE	DESCRIPTION
00673223	Thyroid Shield – 0.5 mm lead equivalence



X-Ray Mittens 0.50 mm

CODE	DESCRIPTION
00407018	Gloves 0.50 mm lead equivalence



Eye Protection

CODE	DESCRIPTION
00842017	Eyewear – front and side protection



Portable generator holder

CODE	DESCRIPTION
00500986	Portable generator holder



X-Ray Foam Positioners



CODE	DESCRIPTION
00002658	Circular block – big 25 x 20 x 11 cm
00002659	Circular block – small 11,5 x 20 x 6 cm
00002655	Rectangular block – 25 x 20 x 7 cm
00002657	Cylinder bolster – 11 x 25 cm
00002656	Positioning block – 20 x 5 cm
00002660	Positioning block with hole – 20 x 7,5 x 7 cm

Hip dysplasia holder



CODE	DESCRIPTION
00707515	Hip dysplasia holder

5G XL Cone Beam 3D Imaging NewTom VET what's next

THE EVOLUTION OF ADVANCED 3D VETERINARY IMAGING

NewTom 5G XL, a CBCT device incorporating unique technology, guarantees advanced top-level diagnostics by maximising patient stability and providing a broad selection of FOVs, resulting in 3D and 2D images of the very highest quality.

CBCT technology combines low X-ray doses with high spatial resolution: the outstanding quality of 5G XL images lets veterinary specialists identify pathologies and fractures that would otherwise be unidentifiable. Patient health – enhanced by the ECO Dose mode and exclusive SafeBeam™ technology – is a key design priority.

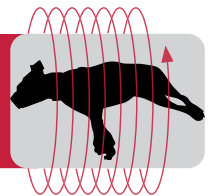
The native 21 x 19 cm FOV and numerous smaller high resolution FOVs constitute a 'toolbox' that is perfect for veterinary diagnostics, which demand sharp, extremely detailed images.



TRADITIONAL CT

MSCT

X-Ray
Fan
Beam



CONE BEAM CT

CBCT

X-Ray
Cone
Beam



SUPERIOR DIAGNOSTIC QUALITY

Very high resolution 3D and 2D images and a broad range of FOVs make the device suitable for a vast selection of clinical applications.



MOTOR-DRIVEN PATIENT TABLE A CBCT

system with an open gantry and motor-driven patient table allows remote-controlled patient positioning, ensuring stability and fast completion of examinations.



MINIMUM TIMES, MAXIMUM USER-FRIENDLINESS

Minimum scan times and automatic calculation of X-ray doses ensure fast acquisition of detailed images and maximum diagnostic capacity.



VETERINARY SOFTWARE

The dedicated interface lets users display images and access innovative 3D and 2D analysis functions for fast, accurate diagnoses and optimal workflow.

**360° RECONSTRUCTION**

The 360° scan acquires the entire volume with a single rotation. 5G XL rapidly generates a complete dataset of axial, coronal and sagittal images as well as 3D renderings.

**EXTRA FOV VISION**

The eXtra FOV function lets users examine large anatomical districts longitudinally (Ø15 x 22 cm). The availability of multiple 3D FOVs, from a minimum of Ø6 x 6 cm to a maximum native FOV of Ø21 x 19 cm, for optimised image acquisition.

**HIRES ANALYSIS**

The ultra-high spatial resolution of 5G XL returns extremely clear, detailed images, allowing for the clear display of micro-fractures and micrometric anatomical details.

**ECO SCAN**

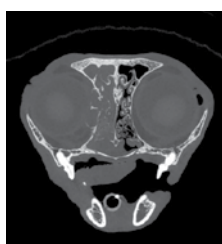
Emissione di raggi x ridotta fino a 0,9 secondi nel caso di esami standard. Il protocollo ECO Scan è l'ideale per controlli post-operatori e analisi di macro strutture.

**SAFEBEAM™**

Exclusive SafeBeam™ technology eliminates the risk of exposing the patient to an unnecessarily high dose by automatically adapting radiation levels to the patient's anatomical FEATURES.

**RAY2D**

The Ray2D function lets users perform a preliminary low dose 2D X-ray examination; if necessary, this can be followed by a high resolution 3D examination of the specific area of interest for further in-depth diagnostics.



DENTAL RADIOLOGY

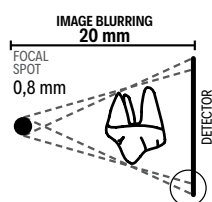
ARIA DentalRay

HIGHER PERFORMANCE AND MAXIMUM ERGONOMICS

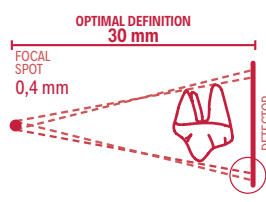


CODE
00006787

Thanks to the protractor with graduated scale, arm and tube head positioning is stable, effective and just right for the task. Made of extruded aluminium and featuring an integrated self-balancing device, allowing them to be pointed in 6 directions and making installation as simple as possible.



Increased X-ray parallelism and an incorporated collimator allow the ARIA DentalRay to achieve a source-to-skin distance of 30 cm, providing pin-sharp, precise images with outstanding detail.



USER-FRIENDLY CONTROL

A practical, user-friendly handheld unit, designed for immediate, precise X-ray image acquisition, allows easy selection of the most suitable programme. Moreover, it allows users to control the exact emitted dose and the tube temperature via the sequential exposure graph.

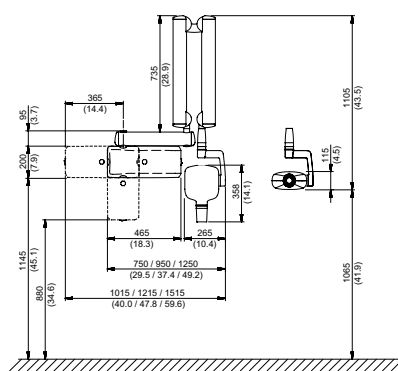
TECHNICAL DETAILS

Generator	Constant potential, microprocessor-controlled
Working frequency	145 ÷ 230 KHz with self-adjustment (typically 175 KHz)
Focal spot	0,4 mm (IEC 336)
Total filtration	2.0 mm Al @ 70kV
Anode current	4 / 8 mA
Voltage at X-ray tube	70 kV
Exposure times	0.020 – 1.000 seconds, R'10 and R'20 scale
Source-skin distance	20 e 30 cm
Irradiated field	Ø 55 mm and Ø 60 mm round
Power supply	50/60 Hz, 115–120Vac ±10% o 230–240Vac ±10%
Max. arm extension	230 cm, from wall
Versions	Standard (wall mounted) or Mobile (on portable cart)

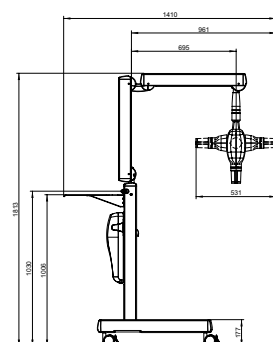


CODE
00006788

WALL MOUNTED



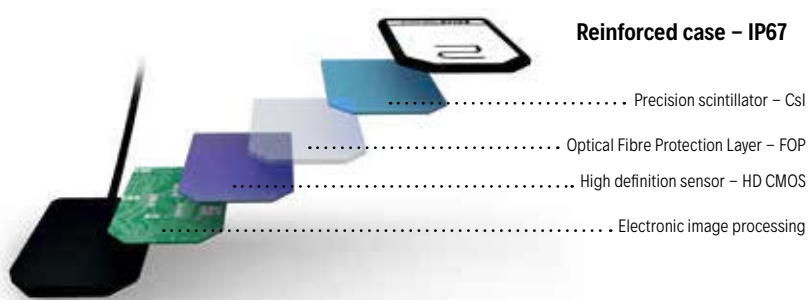
MOBILE



ARIA X-HD

ALWAYS READY, FAST, PORTABLE

ARIA X-HD means real-time diagnostics, direct USB plug-and-play connection, high definition and immediate results. The sensor uses NNT, the all-in-one software ideal for diagnostics, communication and management of intraoral veterinary imaging in perfect synchronism with any other device already in the surgery.



FIVE-LAYER SENSOR

Five-layer technology, for high-contrast images and precision detail. Cesium Iodide (Csl) scintillator made up of column-like micro-structures that preserve image quality; it first intercepts the X-ray beam and converts it into visible light. The fibre optics layer (Fibre Optics Plate) collimates the radiation onto the sensor and protects it against direct X-ray penetration. The third layer (CMOS HD) is the acquisition device which converts the light into a digital image with 16,384 grey levels. The fourth layer pre-processes the image and converts it into a USB signal. The last layer has a protective function.

TECHNICAL DETAILS

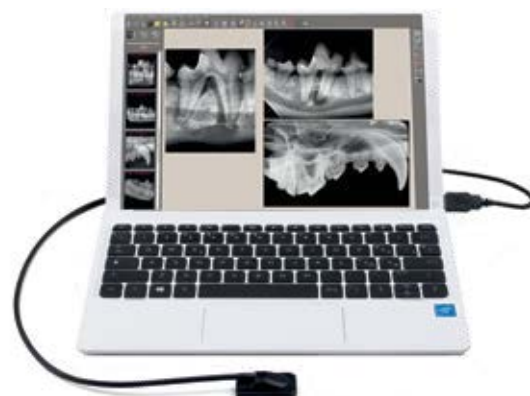
	1	2
External dimensions (mm)	38,9 x 24,9	41,9 x 30,4
Thickness (mm)	5,3	5,7
Pixel matrix	1500 x 1000	1700 x 1300
Pixel size (µm)	20	20
Maximum resolution (lp/mm)	25	25
Grey levels depth	14-bit acquisition – 16384 maximum grey levels	
Scintillator technology	Csl (Cesium Iodide) with micro-columnar structure	
Direct exposure protection	FOP (Fibre Optics Plate)	
Protection rating	IP 67 (Guaranteed against liquid or dust infiltration)	
Connectivity	Direct USB to PC	
Image management software (for PC)	NNT (for PC) with DICOM 3.0 interface with free viewer and APP for iPad	
Supported operating systems	Windows® 7 (SP1) – 8 – 10 (64 bit)	
Display settings	1344 x 768 or greater, 16 million colours	
Port	USB 2.0 or subsequent 5 VDC, 500 mA (via USB)	



DUAL FORMAT

ARIA X-HD is equipped with a sensor, available in two sizes, ergonomic and with smoothed edges, which adapt it to the anatomy of the patient's oral cavity, guaranteeing outstanding positioning comfort.

Reduced dimensions and a maximum active area ensure advanced X-ray diagnosis.



ARIA IN THE WORLD



ARIA stands for “**Advanced Resources for Imaging and Applications**” and is a complete **digital radiography product line** developed and distributed by Foschi.

We are aware that digital radiography solutions are as individual as veterinary practices, and this is why ARIA offers a wide range of solutions for Computed Radiography (CR), Digital Radiography (DR) and digital image management. All of our hardware is designed with the manufacturer or sourced from the world's leading imaging providers. It is tough and reliable, but in case of a breakdown, we offer an extensive Service and Support concept with different maintenance options.

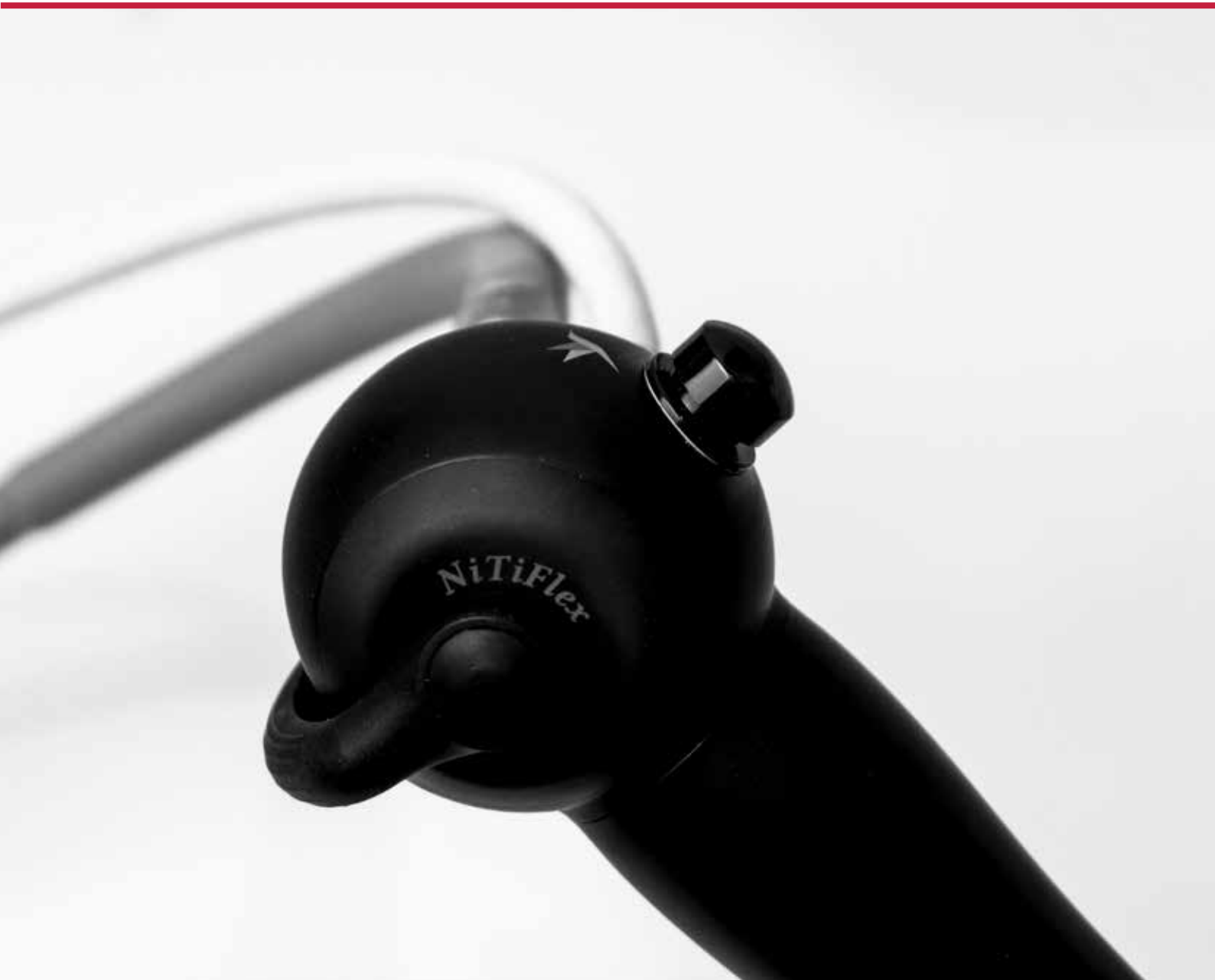
The centre of all our xray solutions is the in-house developed **software ARIA**, which has been developed **with the vet, for the vet**. It was developed by Foschi in cooperation with diplomats from the ECVI (European College of Veterinary Diagnostic Imaging), in order to offer a technology that is reliable and built to cope with the demanding environment of the veterinary professionals.

Today ARIA counts over 10 international distributors worldwide and **more than 800 X-Ray systems installed globally**. The incredible success of ARIA x-ray system is the quality of the image, but also for its incredibly simple and intuitive interface and all the specific tools that were tailored specifically for the vets needs! Call us today to know the closest distributor next to you.





ARIA[®] NiTiFlex





THE FIRST LINE OF ENDOSCOPES MADE IN ITALY

The choice of innovative materials elevates us to new and improved quality standards.

**+ ALUMINIUM CHASSIS
FOR STRUCTURAL SOLIDITY**

+ NITINOL SHEATH STRUCTURE

**+ SHAPE-MEMORY INSERT
FOR A LONGER DURABILITY**

**+ FULL HD VIDEO SENSOR
FOR A SUPERIOR IMAGE QUALITY**

+ AUTOCLAVABLE UP TO 10 CYCLES

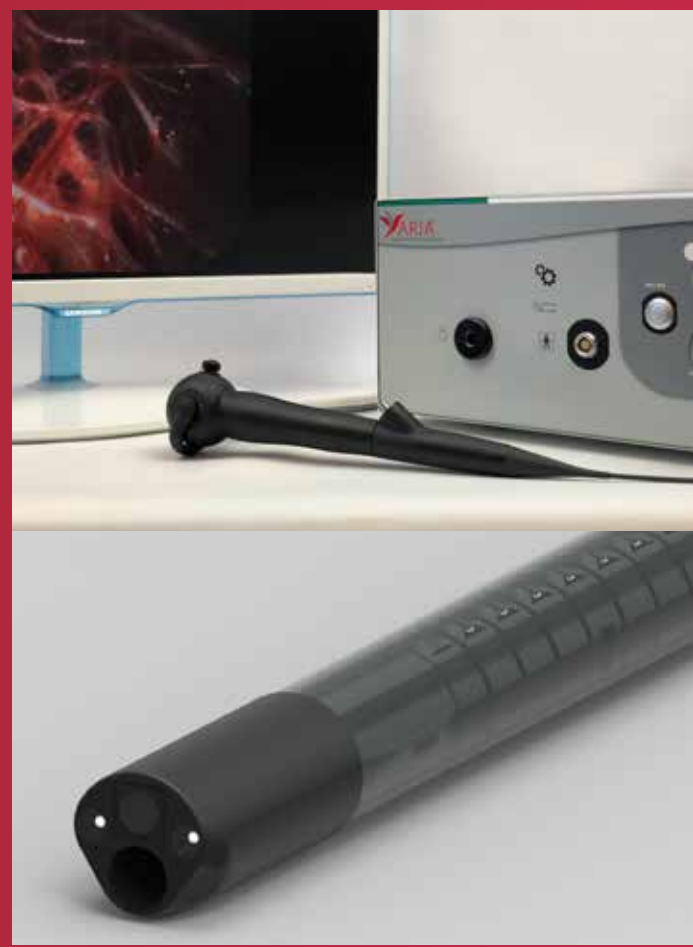
**+ 2 MODEL AVAILABLE
WITH DIFFERENT DIAMETERS**

ARIA NiTiFlex Video Endoscopes provide excellent diagnostic quality, which is obtained via a state-of-the-art **Full HD 1080p** output CMOS sensor. This technology guarantees a high resolution image with spectrometrically calibrated colours and it is able to accurately replicate various typologies of organic tissues.

The handles have been tested and designed to be extremely ergonomic, in order to optimize usability of transendoscopic accessories, facilitate handling and minimize weariness during standard utilization.

With **850mm of working length** and 2 diameters, 2,8mm for v2.85 and 4,4mm for v4.4, the probes are coated with a biocompatible material—sheath made of **Nitinol**, a Nickel and Titanium shape memory alloy characterized by excellent resistance and flexibility. The choice of these innovative materials allows a wide working channel of 1,2mm and a **distal angulation (up/down) up to 270°** for the NiTiFlex 2.85 and a superb working channel of 2,2mm and a **distal angulation (up/down) up to 180°** for V4.4.

The combination of all these FEATURES is what makes ARIA NiTiFlex Endoscopes absolutely unique.



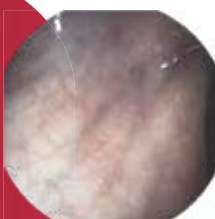


DEEVIEW VIDEO PROCESSOR

By connecting the Video Endoscope EndoFlex v2.85 to the Video Processor MP-DEEVIEW RGB LED, you can access a powerful, next-generation LED lighting system, paired with an optical filter switch that allows vision on three different depth levels. Therefore, this system enables early diagnosis and identification of the margins of injuries.

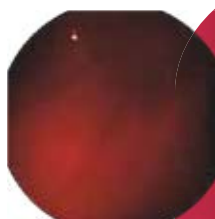
W-EMOS

Enables high-resolution vision of internal structures



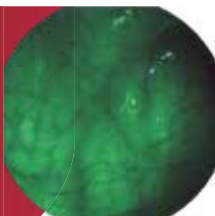
R-EMOS

Emphasises vascularisation patterns of the first layer underlying the mucous membrane



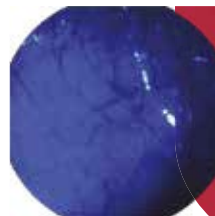
G-EMOS

Emphasises vascularisation patterns of the second layer underlying the mucous membrane



B-EMOS

Emphasises vascularisation patterns of the third layer underlying the mucous membrane



FEATURES

Observation	Output video signal	HDMI
	Image enhancement	Spectrometrically calibrated colours Automatic border enhancement Automatic range selection
	Brightness correction	Incremental with potentiometer 0–100 (%)
	Colour filters	Optical enhancement of the morphological structure of the mucous membrane to reveal up to three depth levels of tissue (selectable through switch on processor)
	White balance	Dedicated button on processor
	Multifunction button	Selectable function between Gain and Enhance
Power	Power supply	~110V/220V AC (±10%)
	Frequency	50Hz/60Hz
Noise	dB	< 52
Light	Bulb	LED
	Colour temperature	≥ 5500K





NITIFLEX v 2.85



The unique characteristics of **NiTiFlex v2.85** make it the perfect instrument for the endoscopic examination of the upper and lower respiratory tracts, the urinary tract and the upper digestive tract of companion animals. It also offers incredible applications in exotic pet medicine, allowing diagnostic endoscopy procedures and minimally invasive endosurgery to be applied to birds, reptiles, amphibians, fish, and small mammals.



FEATURES

Code	00007366
Working length	850 mm
External diameter	2,85 mm
Working channel	1,2 mm
Distal angulation	up 270°/down 270°
Light Fibers	2



External diameter 2,8 mm



Working length 1,2 mm

NITIFLEX v 4.4



NiTiFlex v4.4 is the essential tool for the endoscopy examination of companion animals. With its incredible ratio between the external diameter and the large working channel, it allows the vet to successfully carry out all diagnostic and therapeutic procedures.

FEATURES

Code	00008294
Working length	850 mm
External diameter	4,4 mm
Working channel	2,2 mm
Distal angulation	up 180°/down 180°
Light Fibers	2



External diameter 4,4 mm



Working length 2,2 mm



ACCESSORIES (on request)

00007702	Biopsy forceps, autoclavable, ø 1,0 mm, length 160 mm
00007703	Grasping forceps (Alligator), autoclavable, ø 1,0 mm, length 160 mm
00007710	Endoscopy cart with 2 movable shelves + drawer (55W x 50D x 145H cm)

OPTIONAL CAMERA FOR RIGID ENDOSCOPY

The camera head provides excellent diagnostic quality, which is obtained via a state-of-the-art Full HD 1080p CMOS sensor (NATIVE). This technology guarantees a high resolution image with spectrometrically calibrated colours and it is able to accurately replicate various typologies of organic tissue.



CODE
00007369



C-mount attachment coupler for full compatibility with rigid optics



Next-generation Full HD 1080p CMOS sensor NATIVE (1920x1080), with HDMI digital output



Three customisable buttons with multiple functions, including Gain and Enhance



Ergonomic design to facilitate handling and minimise weariness of operator

RIGID ENDOSCOPES

- + Sapphire full HD glass on the distal end and ocular side
- + Autoclavable at 134° for 18 minutes
- + 'Made in Germany' quality



ARTHROSCOPES

CODE	DIAMETER	LENGTH	DIRECTION OF VIEW
00007582	Ø 1.9 mm	60 mm	0°
00007583	Ø 1.9 mm	60 mm	30°
00007584	Ø 2.7 mm	110 mm	0°
00007585	Ø 2.7 mm	110 mm	30°
00007586	Ø 2.7 mm	110 mm	70°
00007587	Ø 2.7 mm	140 mm	0°
00007588	Ø 2.7 mm	140 mm	30°
00007589	Ø 2.7 mm	175 mm	0°
00007546	Ø 2.7 mm	175 mm	30°
00007591	Ø 2.7 mm	175 mm	70°
00007592	Ø 2.7 mm	187,5 mm	0°
00007593	Ø 2.7 mm	187,5 mm	30°
00007594	Ø 2.7 mm	187.5 mm	70°

LAPAROSCOPES

CODE	DIAMETER	LENGTH	DIRECTION OF VIEW
00007590	Ø 2 mm	300 mm	0°
00007614	Ø 2 mm	300 mm	30°
00007595	Ø 5 mm	300 mm	0°
00007388	Ø 5 mm	300 mm	30°
00007596	Ø 10 mm	339 mm	0°
00007387	Ø 10 mm	341 mm	30°
00007597	Ø 10 mm	341 mm	45°

CYSTOSCOPES

CODE	DIAMETER	LENGTH	DIRECTION OF VIEW
00007606	Ø 2.7 mm	302 mm	0°
00007607	Ø 2.7 mm	302 mm	30°
00007608	Ø 2.7 mm	302 mm	70°

URETEROSCOPES

CODE	DIAMETER	LENGTH	DIRECTION OF VIEW
00007598	Ø 1.5/2.2 mm	315 mm	5°
00007601	Ø 1.5/2.2 mm	430 mm	5°
00007599	Ø 2.0/2.5 mm	315 mm	5°
00007600	Ø 2.0/2.5 mm	315 mm	12°
00007602	Ø 2.0/2.5 mm	430 mm	5°
00007603	Ø 2.0/2.5 mm	430 mm	12°
00007604	Ø 2.7/3.2 mm	315 mm	12°
00007605	Ø 2.7/3.2 mm	430 mm	12°

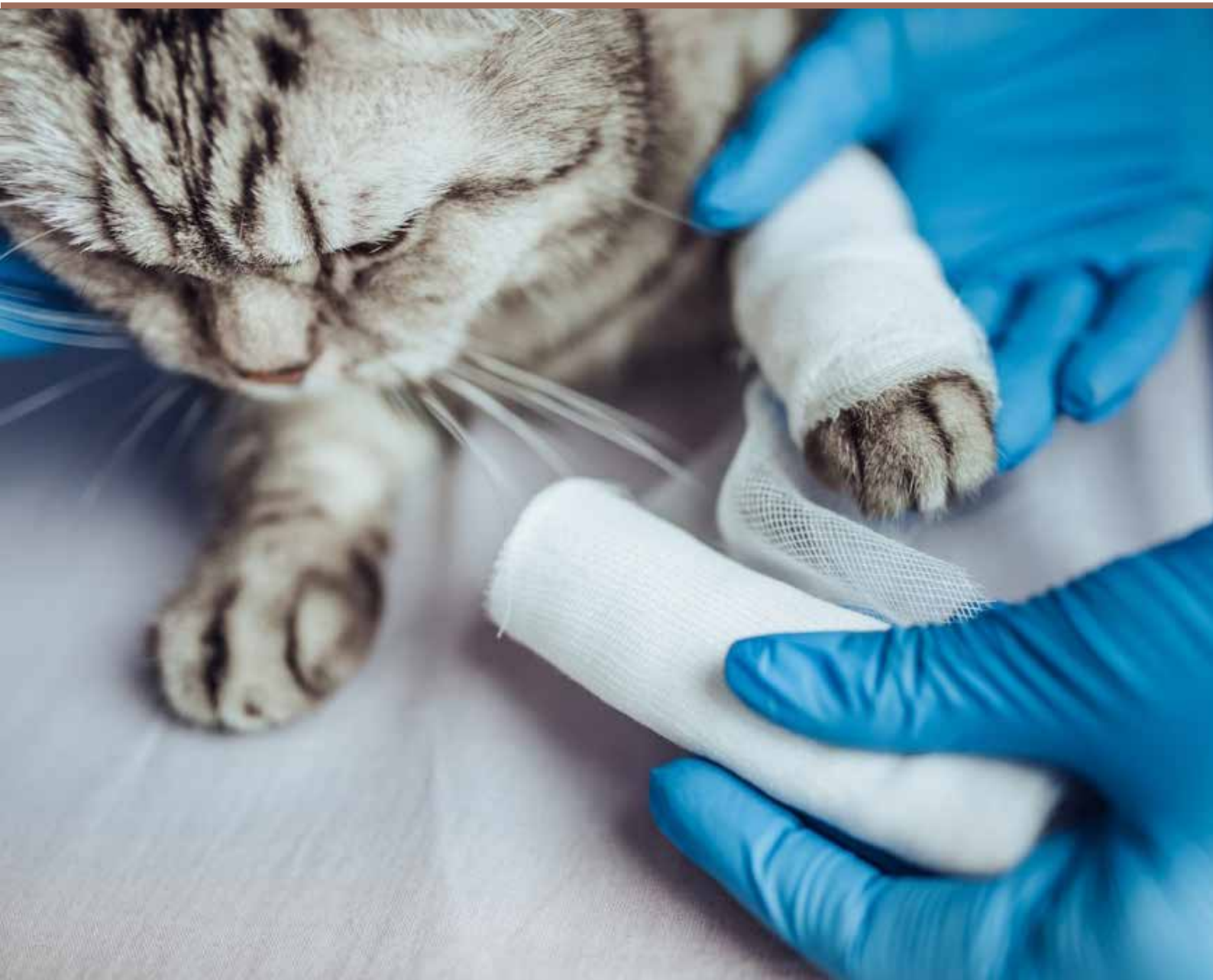
OTOSCOPES

CODE	DIAMETER	LENGTH	DIRECTION OF VIEW
00007609	Ø 2.7 mm	50 mm	0°
00007610	Ø 2.7 mm	50 mm	30°
00007611	Ø 4 mm	50 mm	0°
00007612	Ø 4 mm	50 mm	30°





ORTHOPAEDICS



ORTHOPAEDICS

FIRST LINE

Cannulated Drill



FEATURES

- Integrated Jacob chuck
- Battery service life up to 40 min
- Reverse switch
- Autoclavable 134°C (273°F)
- Cannulation up to 3.5 mm
- Noise ≤ 40 db
- Speed 0–630 rpm
- Torque 3.3 N m
- Weight 1.400 gr (without battery)



ACCESSORIES (on request)

- Battery charger (single slot) (code 00001197)
- Nickel–Metal Hydride Battery (NiMH) (code 00001196)
- Key for Jacobs chuck



FIRST LINE

Sagittal Saw



FEATURES

- Monofunctional handpiece
- Battery service life up to 40 min
- Autoclavable 134°C (273°F)
- Noise ≤ 75 db
- Operation voltage 14.4 V
- Oscillations 0–15.000 osc/min
- Output power ≥ 90 w
- Weight 1.400 gr (without battery)



ACCESSORIES (on request)

- Nickel–Metal Hydride Battery (NiMH) (code 00001196)
- Battery charger single slot (code 00001197)



BLADES (on request)

The saw mounts a variety of saw blades with different thickness and lengths:

00603067	Blade for sagittal saw 9.5/0.5/41 mm (L/W/H)
00603065	Blade for sagittal saw 10/0.5/60 mm (L/W/H)
00603066	Blade for sagittal saw 14/0.8/70 mm (L/W/H)

GIULIUS LINE

Cannulated Drill

FEATURES

- Integrated Jacobs chuck
- Battery service life up to 40 min
- Reverse switch
- Autoclavable 134°C (273°F)
- Cannulation up to 3.0 mm
- Noise ≤ 40 db
- Speed 0–600 rpm
- Torque 1 N m
- Weight 770 gr (without battery)

ACCESSORIES (on request)

- Battery charger (single slot) (code 00003360)
- Nickel–Metal Hydride Battery (NiMH) (code 00003361)
- Key for Jacobs chuck
- Autoclavable Stainless Steel Case (code 00603071)



GIULIUS LINE

Sagittal Saw



FEATURES

- Battery service life up to 40 min
- Monofunctional handpiece
- Autoclavable 134°C (273°F)
- Noise ≤ 40 db
- Oscillations 0–15.000 osc/min
- Weight 770 gr (without battery)

ACCESSORIES (on request)

- Battery charger (single slot) (code 00003360)
- Nickel–Metal Hydride Battery (NiMH) (code 00003361)
- Autoclavable Stainless Steel Case (code 00005190)

BLADES (on request)

The saw base mounts a variety of saw blades with different thickness and lengths:

00003460	Blade for sagittal saw 7,5/0,5/35 mm (L/W/H)
00003459	Blade for sagittal saw 9,5/0,5/35 mm (L/W/H)
00003461	Blade for sagittal saw 14/0,5/41 mm (L/W/H)

PREMIUM LINE

Cannulated Drill

The unit is fully autoclavable. The motor is quiet, high speed and grants long service life. Can connect various flexible reamers and reaming change is simple and fast. The Nickel–Metal Hydride battery, lasts up to 50 minutes.



FEATURES

- Integrated Jacobs chuck
- Battery service life up to 50 min
- Reverse switch
- Torque 6,5 N m
- Autoclavable 134°C (273°F)
- Cannulation up to 4.0 mm
- Noise ≤ 40 db
- Speed 0–1.000 rpm
- Weight 1.415 gr (with battery)



INCLUDES

- Battery charger (single slot) (code 00603077)
- Nickel–Metal Hydride Battery (NiMH) (code 00603076)
- Key for Jacobs chuck
- Stainless Steel Case for drill (code 00603079)



PREMIUM LINE

Sagittal Saw

For cutting bone steadily and quickly during joint surgery, avoiding soft tissue damage. The unit is fully autoclavable. The motor is quiet and the Nickel–Metal Hydride battery lasts up to 50 minutes, allowing long service life.



FEATURES

- Monofunctional handpiece
- Battery service life up to 40 min
- Autoclavable 134°C (273°F)
- Noise ≤ 40 db
- Oscillations 0–15.000 osc/min
- Weight 770 gr (without battery)
- Speed mode switch (Low–High)



INCLUDES

- Battery charger (single slot) (code 00603077)
- Nickel–Metal Hydride Battery (NiMH) (code 00603076)
- Stainless Steel Case for saw (code 00005191)



BLADES (on request)

The saw mounts a variety of saw blades with different thickness and lengths:

00603067	Blade for sagittal saw 9.5/0.5/41 mm (L/W/H)
00603065	Blade for sagittal saw 10/0.5/60 mm (L/W/H)
00603066	Blade for sagittal saw 14/0.8/70 mm L/W/H)



EXOTIC MINIDRILLS

Electric Saw



FEATURES

- Power 115 VA
- Frequency 50Hz
- Oscillations over 11.000 osc/min
- Noise ≤ 40 db
- Nickel–Metal Hydride Battery (NiMH)



CODE
00603064

Electric Drill



FEATURES

- Power 115 VA
- Frequency 50Hz
- Speed 1000 rpm
- Noise ≤ 40 db
- Nickel–Metal Hydride Battery (NiMH)



CODE
00603059



ACCESSORIES (on request)

CODE
00603057

• Battery

CODE
00603058

• Charger

CODE
00603063

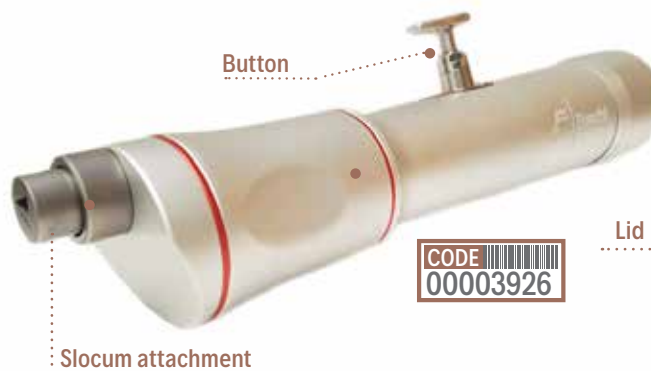
• Drill Bit

FURIUS TPLO SAW



FEATURES

- Monofunctional handpiece
- Autoclavable 134°C (273°F)
- Noise ≤ 75 db
- Oscillations 0–16.000 osc/min
- Battery service life up to 40 min
- Length 290 mm
- Diameter 55 mm
- Weight 900 gr (without battery)



CODE
00003926



ACCESSORIES (on request)

- Nickel–Metal Hydride Battery (NiMH) (code 00003928)
- Battery charger single slot (code 00003927)
- Stainless Steel Case (code 00003929)



TPLO BLADES (on request)

00006157	Slocum TPLO Blade 8 mm
00004389	Slocum TPLO Blade 10 mm
00004388	Slocum TPLO Blade 12 mm
00003923	Slocum TPLO Blade 15 mm
00001198	Slocum TPLO Blade 18 mm

00003924	Slocum TPLO Blade 21 mm
00001199	Slocum TPLO Blade 24 mm
00003925	Slocum TPLO Blade 27 mm
00001200	Slocum TPLO Blade 30 mm
00004909	Slocum TPLO Blade 33 mm



F2016

Multifunction powertool



FEATURES

- Multifunctional handpiece
- Autoclavable 134°C (273°F)
- Noise ≤ 75 db
- Reverse switch
- Battery service life up to 40 min
- Weight < 1 kg (with battery)



ACCESSORIES (on request)

- Nickel–Metal Hydride Battery (NiMH) (code 00001196)
- Battery charger single slot (code 00001197)
- Key for Jacobs chuck



CODE
00001169

ATTACHMENTS (on request)

JACOBS ATTACHMENT



- Speed 0–1.000 rpm
- Torque 2.9 N m

CODE
00001171

CANNULATED JACOBS ATTACHMENT



- Speed 0–630 rpm
- Torque 3.3 N m

CODE
00001172

AO RAPID ATTACHMENT



- Speed 0–1.100 osc/min
- Torque 3 N m

CODE
00001194

SAGITTAL SAW ATTACHMENT



- Speed 0–15.000 osc/min

CODE
00001170

TPLO ATTACHMENT



- Speed 0–15.000 osc/min

CODE
00001195

TPLO BLADES

00006157	Slocum TPLO Blade 8 mm
00004389	Slocum TPLO Blade 10 mm
00004388	Slocum TPLO Blade 12 mm
00003923	Slocum TPLO Blade 15 mm
00001198	Slocum TPLO Blade 18 mm
00003924	Slocum TPLO Blade 21 mm
00001199	Slocum TPLO Blade 24 mm
00003925	Slocum TPLO Blade 27 mm
00001200	Slocum TPLO Blade 30 mm
00004909	Slocum TPLO Blade 33 mm

FURIUS

Multifunction powertool



FEATURES

- Multifunctional handpiece
- Autoclavable 134°C (273°F)
- Reverse switch
- Noise ≤ 45 db
- Battery service life up to 40 min
- Weight 550 gr (without battery)



ACCESSORIES

- Nickel–Metal Hydride Battery (NiMH)
(code 00001196)
- Battery charger single slot (code 00001197)
- Key for Jacobs chuck



ATTACHMENTS (on request)

JACOBS ATTACHMENT



- Speed 0–1.000 rpm
- Torque 0.9 N m

CODE
00003356

CANNULATED JACOBS ATTACHMENT



- Speed 0–460 rpm
- Torque 1 N m

CODE
00003358

AO RAPID ATTACHMENT



- Speed 0–1.100 osc/min
- Torque 0.9 N m

CODE
00003357

SAGITTAL SAW ATTACHMENT



- Speed 0–15.000 osc/min

CODE
00003355

K-WIRE ATTACHMENT

- Available in 2 versions:
0.8 – 2.0 mm (code 00003359)
2.0 – 3.0 mm (code 00003436)
- Speed 0–1.100 rpm
- Torque 1 N m



CODE
00003359

CODE
00003436

JACOBS DRILL BITS

00603042	Jacob attachment Ø 1.1 mm, length 115/35 mm
00603043	Jacob attachment Ø 1.5 mm, length 115/35 mm
00603044	Jacob attachment Ø 1.8 mm, length 115/35 mm
00603045	Jacob attachment Ø 2.0 mm, length 115/35 mm
00603046	Jacob attachment Ø 2.5 mm, length 115/50 mm
00603047	Jacob attachment Ø 2.7 mm, length 115/50 mm



AO RAPID DRILL BITS

00603048	AO attachment Ø 1,1 mm length 125/25 mm
00603049	AO attachment Ø 1,5 mm length 100/35 mm
00603050	AO attachment Ø 1,8 mm length 125/25 mm
00603051	AO attachment Ø 2,0 mm length 125/30 mm
00603052	AO attachment Ø 2,5 mm length 150/45 mm
00603053	AO attachment Ø 2,7 mm length 125/50 mm

MICROMOTOR FOR SPINAL SURGERY

High power and easy to use micro-surgical power tool for a wide range of applications in neurosurgery (spine, brain, trauma). Attachments can be assembled and disassembled rapidly and are 134° C/273° F autoclavable.



FEATURES:

- Touch screen power console AC110V–220V (code 00603041)
- Electric handpiece (code 00603039)
- Angled attachment (1.000–100.000 rpm) (code 00603031)
- Sagittal saw attachment (0–15.000 rpm) (code 00603032)
- Pedal switch (code 00603040)

BLADES FOR SAGITTAL SAW (on request):



- Blade 18/5/0.5 mm

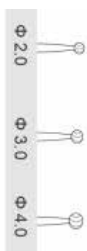


- Blade 21/7/0.5 mm



- Blade 28/5/0.5 mm

BURRS FOR ANGLED ATTACHMENT (on request):



- Rosen burr 2x70 mm



- Rosen burr 3x70 mm



- Rosen burr 4x70 mm



- Electric handpiece



- Angled attachment



- Sagittal saw





OPHTHALMOLOGY



OPHTHALMOLOGY

DRY EYE

SBM ICP OSA-VET – Ocular Surface Analyser

 Made in Italy

The Ocular Surface Analyser (OSA) is an excellent device for simplifying the dry-eye diagnosis procedure with clear, well-designed software presentation. The OSA can quickly determine which type of dry eye disease is present which allows the user to determine which treatment to provide.

The OSA easily and efficiently integrates the following complex examinations, providing the user with an easy to use 'traffic light' results report:

- Meibography imaging
- Blepharitis imaging
- Non Invasive Break up Time (NIBUT)
- Lipid Layer evaluation
- Tear Meniscus Height

OSA-VET MEIBOGRAPHY

Meibography allows to evaluate the morphology and drop out of the meibomian glands and to make the diagnosis of Meibomian Gland Dysfunction (MGD).

The software allows to analyze the functional and non functional areas, and to evaluate the extension of the affected area.

FEATURES

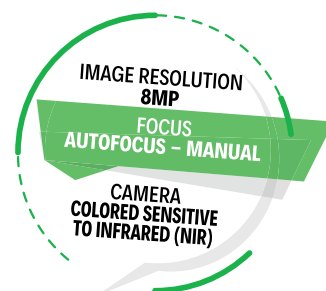
IMAGE RESOLUTION	5 mp
ACQUISITION MODE	Multi shot, video
FOCUS	Autofocus, manual focus
ISO MANAGEMENT	Variable
GRIDS	Placido disc, NIBUT grid
CAMERA	Coloured, sensitive to infrared (NIR)
LIGHT SOURCE	Infrared LED – Blue and white Led
OPERATIVE SYSTEM	For Windows System

ICP OSA-VET DRY EYE ANALYSIS

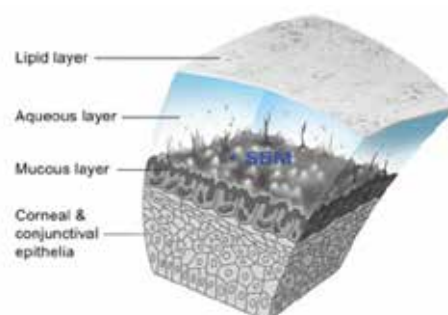
OSA-Vet is an instrument available to veterinary ophthalmologists to evaluate the composition and stability of the Precorneal Tear Film (PTF). It allows to better evaluate PTF qualitative deficiencies and make an accurate diagnosis of evaporative Dry Eye Disease (DED) due to imbalance of the three main PTF components:

- Lipids
- Aqueous
- Mucins

Thanks to OSA-Vet it is possible to identify the type of DED, determine which deficient layer is affected and select a specific treatment.



CODE
00004894





ICP TEARVET-A (Tear Film Analyser)



FEATURES

Tear film lipid layer examination—The scattered light emitted by the Tearvet-A system allows to evaluate the interference patterns of the tear film Lipid Layer (LL). The different patterns can be classified according to LL thickness and quality. By examining the LL it's possible to detect lacrimal abnormalities and make a correct diagnosis.

TPOLOGY	Tear Film diagnosis
IMAGE RESOLUTION	From 8 to 12 mp
ACQUISITION MODE	Multi shot, tube
FOCUS	Autofocus, manual focus
ISO MANAGEMENT	Variable
MAGNIFICATION	4x to 8x magnification with change via software
GRIDS	Placido disc, NIBUT grid
FILTERS	Yellow filter
LIGHTING	White led – Blue led
OPERATIVE SYSTEM	For iPad II, iPad, iPad Pro



ICP MGA-VET (Meibomian Glands Analyser-Vet)



FEATURES

- Imaging & Automated Analysis of Meibomian Glands;
- Diagnosis of Meibomian Gland Dysfunction – a leading cause of Dry Eye Disease;
- Simple fast acquisition and advanced recognition software;
- Quantifies Meibomian Gland percentage loss;
- Light weight portable device or Slit Lamp mounted;
- For use with an iPad.

TPOLOGY	Device for evaluation of the meibomian glands
CAMERA	Sensitive to infrared (NIR)
RESOLUTION	8 MPx
LIGHT SOURCE	Infrared LED
PART EXAMINED	Upper and lower eyelids
RATING	Calculation of the percentage of functional glands in the selected area and of the missing glands
GRAPHIC RESULT	Points out with color the areas with and without glands
TOOLS	Editor to highlight the area of the glands to be evaluated
OPERATIVE SYSTEM	For iPad – For Windows System



• COMPARATIVE TABLE •



ICP OSA-VET



ICP TEARVET-A



ICP MGA-VET

LIPID LAYER	LIPID LAYER	–
INTERFEROMETRY	INTERFEROMETRY	–
N.I.B.U.T	N.I.B.U.T	–
TEAR MENISCUS	TEAR MENISCUS	–
MEIBOGRAPHY	–	MEIBOGRAPHY
GRADING SCALE	GRADING SCALE	–
REPORT	REPORT	REPORT

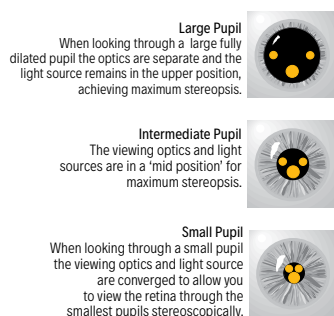


Keeler

VANTAGE PLUS LED indirect ophthalmoscope

(Not available in  and )

The LED cooler color temperature provides brighter illumination, longer battery life, and freedom from purchasing bulbs. The LED life expectancy is up to 10,000 hours. Clinically, the superior optics combined with the LED illumination could provide greater detail, allowing you to find retinal pathology that was not visible with the xenon bulb BIO's



-  Longest life, brightest, better detail
-  30% brighter than standard bulbs
-  New Slimline Lithium Polymer battery weighs less than 53 grams
-  Combined LED and Lithium Polymer battery can provide up to 6 hours of use on a single charge

KEELER® Practitioner Ophthalmoscope 3.6V

(Not available in  and )

The Keeler line of Direct Ophthalmoscopes have been designed to ensure ultimate control. Lenses, graticules and filters can all be introduced at the touch of a fingertip. No need to pull away from the patient, the Keeler Direct Ophthalmoscopes make routine examinations far easier.

FEATURES

- Head and handle
- Lens range up +40D to -25D
- Filters: Red free – Blue – Slit
- Rapid chgament in 2 hours



MINI LITHIUM CHARGER FOR 3.6V HANDLE



00003468

FINHOFF TRANSILLUMINATOR 3.6V (HEAD ONLY)



CODE 00003467



CODE 00003466

KEELER® PSL Classic Portable Slit Lamp

(Not available in  and )

Advanced optics, 10x & 16x magnifications Top quality multi layered glass is crafted into our Keeler multi-element and multi-layer coated optical system to give maximum performance.

Big Slit Lamp features, Portable usability Unique features such as the fixation targets, and the 1mm square light patch for assessing a/c flare set the new standard for Portable Slit Lamps. Comes with alluminium carrying case.



CODE
00002227



ALSO AVAILABLE

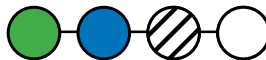
CODE
00002478

Psl spare battery

CODE
00002481

Psl led bulb

Filter wheel
Red free, Blue, Neutral
density (0.8) and Clear



Slit wheel



KEELER® Mini Loupes

(Not available in  and )

Mini Loupes are designed to be ultra light and comfortable with minimal compromise in field of view. Absolute comfort is our achievement; excellent peripheral vision is the added benefit of our slim design.



FEATURES

- Work distance from 42 to 46 cm
- Magnification from 2.0x to 5.5x
- 34000 LUX LED power



ALSO AVAILABLE

- Mounting system regular fit/standard temple black
CODE 00002382
- Headband Keeler for Loupes
CODE 00002230
- New k-led with 1 battery and charger tray
CODE 00002231
- Xl advantage loupe 3.5X/42cm
CODE 00002972



CODE
00002230

CODE
00002972



CODE
00002382

SUITABLE FOR:

- Ophthalmology
- Orthopaedics
- ENT
- Urology
- Obstetrics & Gynaecology
- General Dentistry



EQUIPMENT



LIGHTING

SCIALYTIC LAMPS Foschi

 *Made in Italy*

SURGICAL AND MEDICAL EXAMINATION LIGHTING SYSTEMS

Quality lighting is essential for every operating room. FOSCHI partners with Rimsa to offer a variety of high-quality LED surgical lights and medical examination lights to meet the needs of today's veterinary operating rooms and exam rooms. FOSCHI surgical lights and examination lights deliver pure white light that enhances deep saturated reds and colors, minimizes shadows and uses less heat, saving energy.

VEGA AND ANTARES

VEGA & ANTARES are a concentration of unparalleled performance technology, the best for a lamp for ambulatories and minor surgery. Their compact dimensions and extremely handy structure are permeated by the strong determination of Rimsa heart, a synonym of high technology, quality and performance ever since. The thin dome with two convenient side grips ensures easier positioning and adjustment and reduces overall dimensions.

ANTARES



FEATURES

- Light intensity mt.1: 100.000 lux
- Color temperature: 4.500 K
- Diameter of the reflector: Ø 400 mm



VEGA



FEATURES

- Light intensity mt.1: 120.000 lux
- Color temperature: 4.500 / 5.000 K
- Manual regulation of focus
- Diameter of the reflector: Ø 400 mm



Mobile version



Wall version



Ceiling version

	Mobile version	Wall version	Ceiling version
ANTARES	00005681	00005680	00005682
VEGA	00005685	00005683	00005684

SIRIO

SIRIO is a surgical lamp with excellent operating versatility. The dome is reduced in size, the focus and the light field can be manually adjusted by turning the central sterilisable handle. This function allows to optimize the light flux and adapt the light field diameter according to the different surgeries.



FEATURES

- Light intensity mt.1: 130.000 lux
- Color temperature: 4.200 k
- Diameter of the reflector: Ø 400 mm



Ceiling version



Wall version



Mobile version



EQUIPMENT

S CLASSIC STERILIZER 17 LT AND 22 LT



Made in Italy

The B Classic makes work easier by optimising times and costs. High-level quality and functions guarantee safety, reliability and ease of use. Thanks to the same external dimensions and LCD display, B Classic is a perfect solution for everyone.

CLASSE
S

17 LT

CODE
00006074

22 LT

CODE
00005567

MODULAR TRAY HOLDER



Allows to make the most of the autoclaving chamber thanks to its circular shape it is able to exploit the whole cylinder of the boiler, increasing the useful space available inside the chamber.

CODE
00005634

SIMPLE TO USE



The LCD display provides a steady stream of useful information on sterilizer status. A solution that ensures excellent, long-lasting sterilizer performance and reliability.

CONSTANT MONITORING



The LCD display provides a steady stream of useful information on sterilizer status. As a result the user is immediately informed as soon as it is necessary to proceed with maintenance tasks. A solution that ensures excellent, long-lasting sterilizer performance and reliability.

SAFE



S Classic incorporates the new safe and simple door closure mechanism which ensures the load can be recovered manually in the event of a power failure.

RAPID COUPLINGS



The quick coupling system for water emptying on the front section of the sterilizer simplifies and speeds up the relevant tasks.

WATER FILLING AND EMPTYING



Complete with level sensors, the filling/emptying tanks feature large doors to make access, inspection and sanitisation easy.

DATA SHARING



FEATURES

	17 LT.	22 LT.
Power supply voltage	220/240 V 50 Hz	
Power	2300 W	
External dimensions LxHxD	480 x 500 x 600 mm	
Chamber dimensions dxD	250 x 350 mm	250 x 450 mm
Total weight	50 kg	53 kg
Autonomy	Da 9 a 12 cicli	Da 7 a 10 cicli
Sterilizable load*	4,5 litri	4,5 litri

EQUIPMENT

USB Port	✓
Serial Port (RS 232)	✓
Bacteriological filter	✓
Trays	2
Tray extractor	✓
Tray support	✓

B CLASSIC STERILIZER 22 LT



Foschi



Made in Italy

The B Classic makes work easier by optimising times and costs. High-level quality and functions guarantee safety, reliability and ease of use. Thanks to the same external dimensions and LCD display, B Classic is a perfect solution for everyone



CLASSE
B

MODULAR TRAY HOLDER



Allows to make the most of the autoclaving chamber thanks to its circular shape it is able to exploit the whole cylinder of the boiler, increasing the useful space available inside the chamber.

CODE
00005634

CODE
00005568

• B Classic 22 Lt

CODE
00005569

• B Classic 22 Lt + demineralizer Pure 100 (22 LT)



FEATURES

Power supply voltage	220/240 V 50 Hz
Power	2300 W
External dimensions LxHxD	480 x 500 x 600 mm
Chamber dimensions dxD	250 x 450 mm
Total weight	54 kg
Autonomy	Da 6 a 10 cicli
Sterilizable load*	4,5 litri



EQUIPMENT

USB Port	✓	Trays	5
Serial Port (RS 232)	✓	Tray extractor	✓
Anti-Dust Filter	✓	Tray support	✓
Bacteriological filter	✓		

ADVANCED OPTIONS



In the case of particularly difficult loads, B Classic lets users set a further drying stage. A delayed start option is also available, allowing users to programme the sterilization cycle at certain times.

INTERNATIONAL SETTINGS



More than 20 languages and the unit of measure can be selected, making the B Classic sterilizer suitable for any surgery.

SAFETY OPENING



No problem in the event of a power outage: the machine hatch can be opened and the material inside it retrieved simply by undoing the lid, gaining access the closure system and opening it manually.

DATA SHARING



B Classic is equipped with an internal memory able to store up to 500 cycles. Automatically saved data can be downloaded at any time via the USB port on the front of the unit. It's also possible to display the files on any device and without any need for additional software thanks to the PDF format.

Foschi **ELECTRO-SCALPEL**

for Monopolar and Bipolar Surgery

 Made in Italy

F120

The Foschi F120 electro-scalpel is an electrosurgical unit capable of supplying current suitable for cuts, coagulating cuts, coagulation in monopolar mode and coagulation in bipolar mode, using neutral electrodes, single or bipartite.



CODE 
00500806

FEATURES

- Digital power display
- Sound emission adjustable in 5 steps (from 55 to 75 dBA)
- Self-diagnosis of failures
- Control of accuracy of radiated power
- Possibility to connect bipartite electrodes
- Storage of last settings used
- Neutral electrode
- Duty Cycle (action/pause) in seconds
- Pedal/manual activation
- Defibrillator protection
- Equipotential plug
- ABS container

Accessories included:

- Sterilisable handpiece with buttons
- Kit of assorted electrodes (10 pcs)
- Neutral electrode connection cable
- Steel neutral electrode
- Single airtight pedal
- 5 m power cable

F200

Allows to execute surgical minimally invasive procedure of resection, evaporation and coagulation. Foschi F200 is a high frequency electrosurgical equipment which is suitable to light and medium surgery.



CODE 
00002300

FEATURES

- Maximum output power CUT: 200 W – 250 Ω
- Maximum output power ENHANCED Ω : 120W – 250 Ω
- Maximum output power BLEND: 120W – 200 Ω
- Maximum output power FORCED COAG: 150 W – 150 Ω
- Maximum output power SOFT COAG: 90 W – 100 Ω
- Maximum output power BIPOLAR COAG: 80 W – 100 Ω
- Working frequency: 600 kHz
- Patient circuit: F
- Mains voltage: 115 – 230 Vac
- Mains frequency: 50–60 Hz
- Electrical input power: 350 VA
- Weight Kgs: 6
- Size WxHxD mm: 370x144x319

Accessories included:

- Reusable handle with switches
- Assorted electrodes (10 pcs)
- Blade electrode 7 cm (3 pcs)
- Needle electrode 7 cm (3 pcs)
- Ball electrode 6 cm (3 pcs)
- Cable for neutral electrode
- Steel neutral electrode
- Disposable split neutral electrode (2 pcs)
- Waterproof foot switch
- Power supply cable 5mt



AVAILABLE ON REQUEST: KIT FOR BIPOLAR SURGERY:

KIT CODE 
02700008

- Adapter for bipolar cable
- Bipolar Cable (3 m)
- Straight Bipolar Forceps (tips 2 mm)

F160HF RADIO-SCALPEL

for Monopolar and Bipolar Surgery

 *Made in Italy*

Foschi F160HF is an **RF electrosurgical unit (radio-scalpel)** capable of supplying current suitable for cuts, coagulating cuts, coagulation in monopolar mode and coagulation in bipolar mode.

- **Pure cut**
- **Coagulating cut**
- **Deep coagulation in absence of coagulation**
- **Superficial coagulation**
- **Bipolar coagulation**
- **Cut with reduced production of necrosis**
- **Operating times programmable in thousandths**



CODE
00500807

FEATURES

- Bipolar coagulation with automatic activation/deactivation
- Automatic impedance control (bipolar coagulation – autostart/autostop)
- Pulse interval repetition
- Timed emission (10 msec – 30 sec)
- Power control via monopole–encoder
- Adjustable sound emission
- Self–diagnosis of failures
- Control of radiated power
- Control of neutral electrode contact – patient
- Possibility to connect bipartite electrodes



Accessories included:

- Sterilisable handpiece with buttons
- Handpiece for microsurgery
- Kit of assorted electrodes (10 pcs)
- Needles for microsurgery/hair removal (10 pcs)
- Blade electrode (3 pcs)
- Needle electrode (3 pcs)
- Ball electrode (3 pcs)
- Neutral electrode connection cable
- Steel neutral electrode
- Bipartite neutral single–use electrode (2 pcs)
- Neutral single–use electrode (2 pcs)
- Single airtight pedal
- 5 m power cable



AVAILABLE ON REQUEST:

KIT FOR BIPOLAR SURGERY:

KIT CODE
02700009

- Bipolar Cable (3 m)
- Straight Bipolar Forceps (tips 2 mm)



Foschi DENTAL UNITS ON TROLLEY

 Made in Italy

Our bestselling **FOSCHI Dental units on trolley** are designed to meet the specific needs of the Veterinary professionals. Those compact dental solutions offer oil-free technology and combine all of the essential dental equipment you need in a single system.

Today there is a tremendous opportunity for improving the level of veterinary dental care delivered by the average practice which results in improved patient care, improved client loyalty, as well as significant financial rewards of your practice.

CV 200 LUX

NEW!



AVAILABLE:

CODE
00007510

**MAIN UNIT
WITH ACCESSORIES**

PLUS
High/low speed,
scaler and
coupling hand-
piece with LED



CV 200



AVAILABLE IN 2 CONFIGURATIONS:



MAIN UNIT + ACCESSORIES + COMPRESSOR



MAIN UNIT + ACCESSORIES



DENTAL UNITS FEATURES:

- Air supply: 5–8 bar
- Dimensions (w x h x l): 500x800x400 mm
- Weight: 30 kg
- Spray water bottle: 1000 ml
- Suction drain bottle: 4000 ml
- Scaler air consumption: 25/35 NI/min approx.
- High speed handpiece air consumption: 35/50 NI/min approx.
- Micromotor air consumption: 50/60 NI/min approx.
- Instrument water consumption: 30/50 ml/min approx.



ACCESSORIES INCLUDED:

- A. Syringe
- B. Suction hose
- C. Low speed hand-piece
- D. High speed hand-piece
- E. Scaler
- F. Tray table
- G. Micromotor spray water control
- H. High speed hand-piece spray water control
- I. Scaler spray water control
- L. Suction drain bottle
- M. Water bottle 1 Lt
- N. Pedal for activating manual controls



Foschi dental units are distributed throughout Europe and are the ideal solutions for high quality at a competitive price!

Dental Unit Air Compressor 70 LT/MIN



CONFIGURATION

- Air return 70 liters / minute
- Air suction 115 liters
- Tank capacity 4 liters
- Two-cylinder engine
- Power 550 watts
- Noise 52 db
- Power supply 220/240 V – 50/60 Hz



00721623



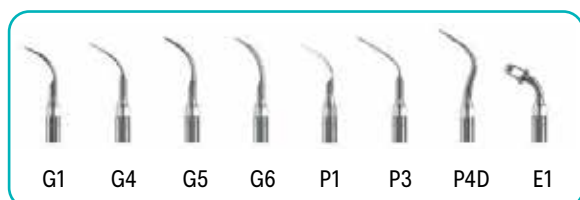
UDS-E ULTRASOUND TOOTH SCALER

Tooth scaler with digital control and automatic research of the frequency. In addition to the standard mode that allows to increase or to reduce the intensity, the toothscaler also allows to work with the peak handpiece (that can be put in the autoclave at 135°) with its interior in titatium and a frequency between 28/32 khz.



FEATURES

- Digital control and automatic frequency research
- Independent watering that can be selected by the operator by a 350 ml tank.
- Disinfectant solutions like clorhexidine, hypochlorite sodium, salty solutions, ect.
- Includes eight scaling tips for hygiene and prophylaxis: E1 – G1 – G4 – G5 – G6 – P1 – P3 – P4D .



CODE
00711981

UDS-L ULTRASOUND TOOTH SCALER

Ultrasound tooth scaler with control and digital frequency research. Automatic water supply system. It works on a standard mode so it is possible to increase or to reduce the intensity, while the UDS-L also allows to work a endo mode.



FEATURES

- Peak handpiece (that can be put in the autoclave at 135 °C) with interior in titanium and frequency between 28/32 kHz
- Digital control and automatic frequency research
- Includes six scaling tips: E1 – P1 – G1x2 – G2 – G4
- Automatic system of water supply.

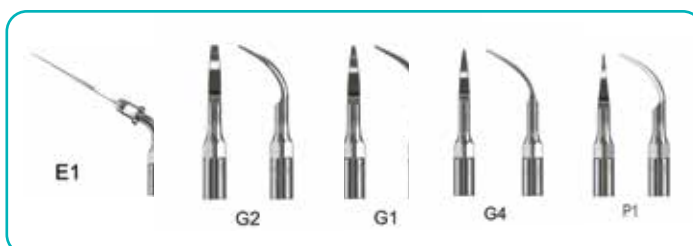


CODE
00711836

**RAPIDLY
REMOVES
PLAQUE
& CALCULUS**

SCALING TIPS

00711837	handpiece	00721366	G5
00711838	torque lurech	00721367	G6
00721362	E1	00721361	P1
00721358	G1	00711369	P3
00721359	G2	00721370	P4
00721360	G4		



PULSE OXIMETRY M800 VET WITH SPO₂



FEATURES

- 2.4" LCD colour display
- SpO₂ technology blt 0–100%
- Heart rate 25–250 bpm
- 3 non-rechargeable batteries included
- Charger not included



AVAILABLE ON REQUEST

- Dock Charger
- Rechargeable battery



(x 3)



PULSE OXIMETRY M800 VET WITH 3-LEAD ECG



FEATURES

- 2.4" LCD colour display
- SpO₂ technology blt 0–100%
- Heart rate 25–250 bpm
- 3-LEAD ECG
- Charger not included



AVAILABLE ON REQUEST

- Dock Charger
- Rechargeable battery



(x 3)



M9000 VET

Multiparametric Monitor

- High resolution 12.1 " LCD display
- 3/5 Lead ECG
- Heart Rate
- Respiratory frequency
- SpO₂ with BLT technology.
- Non invasive pressure (NIBP)
- Temperature (2-TEMP)

Software:

- dogs, cats, horse



STANDARD CONFIGURATION



MONITOR WITH NO
CO₂ PREDISPOSITION



CO₂ CONFIGURATION



MONITOR WITH
CO₂ PREDISPOSITION



CO₂ MODULE



CO₂ SAMPLING LINE

INFUSION PUMP SK 600 I



APPLICATIONS

- Total Parenteral Nutrition (TPN)
- Critical care
- Animal transport
- Emergency medicine
- Fluid replacements
- Lipids
- Enzyme replacements
- Chronic pain management



FEATURES

- Large and easy to use LCD display for simple set up and monitoring
- Soft key board for easy setting
- Supports multiple languages
- Infrared sensor and alarm for air detection
- Drip sensor
- Flow rate range: 1–600 ml / h (in 1 ml / h increments)
- Bolus rate: 600 ml/h;
- The application of the dual CPU system makes the pump safer and more reliable
- Compatible with any type of standard set



INTENDED USE

- Parenteral
- Intravenous
- Subcutaneous
- Percutaneous
- Intra-Arterial

SYRINGE INFUSION PUMP SK 500 II



FEATURES

- Three infusion modes: Rate Mode, Time Mode, Body Weight Mode
- Soft Keyboard for easy setting
- Hook for universal stand
- Dual CPU system that makes the infusion process safer and more reliable
- Accuracy: $\pm 3\%$
- The injection time is indicated so that the solution can be controlled during the process
- The KVO rate prevents the formation of clots when the pump is inactive. Between 0.1 ml/h and 5 ml/h can be selected
- The device is capable of recognizing the capacity of the syringe
- The device is equipped with an alarm that automatically stops the process in case of errors or malfunctions
- In case of power failure, thanks to the built-in battery, the device will automatically save the settings
- Syringe type: 5, 10, 20, 30, 50 ml
- Increment: 0,1 ml/m



ANAESTHESIA DEVICE ON A TROLLEY VERSION



FEATURES

- Glass flowmeter double scale 0–10 Lt
- Tec 3 isoflurane vaporizer
- Isoflurane keyfillers
- Vaporizer: fixed mount
- Mapleson C (for open breathing system)
- Green rubber ball anesthesia 1 lt
- Absorber for Komesaroff anaesthetic machine, whit gas inlet
- F–hose for Komesaroff
- Bain coaxial respiratory circuit (for closed breathing system)
- Anesthesia balloon (0,5 L – 1 L – 1,5 L – 2 L)
- Tracheal tube (from 2,5 mm to 10 mm)
- Steel anaesthesia trolley with blue drawers



AVAILABLE ON REQUEST

WITH SEVOFLURANE VAPORIZER



Anaesthesia Device
on a Trolley version:

CODE
21006962

SELECTATEC

CODE
20006962

CAGEMOUNT



CODE
21001173

ANAESTHESIA DEVICE ON WALL VERSION



FEATURES

- Glass flowmeter double scale 0–10 Lt
- Tec 3 isoflurane vaporizer
- Isoflurane keyfillers
- Vaporizer: fixed mount
- Mapleson C (for open breathing system)
- Green rubber ball anesthesia 1 lt
- Absorber for Komesaroff anaesthetic machine, whit gas inlet
- F–hose for Komesaroff
- Bain coaxial respiratory circuit (for closed breathing system)
- Anesthesia balloon (0,5 L – 1 L – 1,5 L – 2 L)
- Tracheal tube (from 2,5 mm to 10 mm)
- Wall bar



CODE
21001174



AVAILABLE ON REQUEST

WITH SEVOFLURANE VAPORIZER

CODE
20006786

SELECTATEC

CODE
20006121

CAGEMOUNT



ANAESTHESIA DEVICE ON STAND VERSION



CODE
02705129



FEATURES

- Glass flowmeter double scale 0–10 Lt
- Tec 3 isoflurane vaporizer
- Isoflurane keyfillers
- Vaporizer: fixed mount
- Mapleson C (for open breathing system)
- Green rubber ball anesthesia 1 lt
- Absorber for Komesaroff anaesthetic machine, whit gas inlet
- F–hose for Komesaroff
- Bain coaxial respiratory circuit (for closed breathing system)
- Anesthesia balloon (0,5 L – 1 L – 1,5 L – 2 L)
- Tracheal tube (from 2,5 mm to 10 mm)
- Steel anaesthesia trolley with blue drawers
- Stainless Stand

CODE
02707004

ANAESTHESIA DEVICE ON STAND VERSION WITH TRAY



AVAILABLE ON REQUEST

SEVOFLURANE SYSTEM:

Anaesthesia Device on stand version:



CODE
22006786

SELECTATEC VAPORIZER (open/closed system)

WITH TRAYS:

CODE
22206786

SELECTATEC VAPORIZER (open/closed system)



CODE
22006121

CAGEMOUNT VAPORIZER (open/closed system)

WITH TRAYS:

CODE
22206121

CAGEMOUNT VAPORIZER (open/closed system)

ISOFLURANE VAPORIZER TEC 3



CODE
00710034

The vaporizers deliver a very fine, highly accurate, and consistent dose of Isoflurane or Sevoflurane to the anesthesia machine.

FEATURES

- Key-fill
- 250cc Liquid anesthetic capacity– nearly twice as much as other vaporizers
- Flow-rate and temperature compensation device
- Constructed of high grade steel and brass with precision manufacture unequaled in the industry.
- Cagemount connection

SEVOFLURANE QUICK FILL VAPORIZER

FEATURES

- Quick-fill
- Positive-locking dial to prevent unintentional engagement
- Automatic flow rate and temperature compensation
- Large sight glass for at-a-glance liquid level monitoring

CODE
00006121

FIXED CONNECTION (CAGEMOUNT)

CODE
00006786

RAPID CONNECTION (SELECTATEC)



VENTILATOR PLUS FOR ANAESTHESIA

Model Plus

Pulmonary ventilator for anaesthesia Plus Model , usable only for closed anaesthesia circuits and monitored data viewers

FEATURES

- LCD 5.5" Display
- Waves P-t, V-t
- Ventilation volume 50–1600 ml
- Respiratory frequency 1–65 BPM
- I:E ratio 8:1 – 1:8
- Monitored parameters : Tidal volume, MV, Ppeak, PEEP,
- Respiratory frequency, I:E ratio
- Maximum pressure alarms: Maximum 20– 60 cmH2O– Minimum: 0–20 cmH2O
- Dimensions 33 x 27 x 41 cm
- To use only with closed anaesthesia circuit.



CODE
00712379

DIGITAL PLATFORM SCALE 0–150 Kg

FEATURES

- Powered by mains
- Dimensions of platform cm 105 x 50 x 5 h
- Weighing range from 0 kg to 150 kg
- Weighing accuracy: 50 gr
- High quality FEATURES
- Digital display
- Automatic stand-by



CODE
02500432

O₂ CONCENTRATOR 0–8 LT/MIN

The Oxygen concentrator is a medical device capable of retaining Nitrogen and enriching the Oxygen content of the ambient air. The product, enriched with Oxygen, then passes through a bacterial filter before going to the patient.

FEATURES

- Flow: from 0 to 8 l/min
- Oxygen concentration: 93% \pm 3%
- Maximum output pressure: 0.04–0.07 Mpa
- Power supply: AC230V \pm 10% – 50 Hz \pm 1
- Noise: \leq 50 dB max
- Weight: 27 kg
- Dimensions (d x l x h): 365 x 375 x 600 mm
- Electrical category: Class II type B
- Product category: Class II A

UNIQUE

The O₂ concentrator is extremely silent and its price is the lowest on the market!



CODE
02721625



AVAILABLE ON REQUEST

CODE
00001640

10 LT (SINGLE FLOW) OXYGEN CONCENTRATOR

LABORATORY CENTRIFUGE FOSCHI F/D–16

FEATURES

- Adjustable from 0 till 4500 revolutions/min
- Integrated timer 0–60 minutes
- Easy to use
- For eight 15 ml tubes
- the engine stops automatically if the cover is open.



CODE
00001368



TECHNICAL FURNISHINGS



Made in Italy



STAINLESS STEEL CAGES

Whether it's a new build or an existing kennel area FOSCHI can offer the best housing solution for all kinds of veterinary practices. Having the proper kennel supplies and equipment makes boarding cats and dogs much more comfortable for them.

With this in mind FOSCHI offers a wide range of standard stainless steel kennel assemblies, configured on years of experience and on the advice of vets and nurses. For those that require a more custom-built design, FOSCHI also offers a custom consultancy service to design a stainless steel kennel that is perfect for your patients' needs.

STANDARD ASSEMBLIES:

All our cages are made from the highest quality stainless steel and produced entirely in Italy. All units are 70 cm deep and are made from polished type 304 stainless steel for easy cleaning and to last a life time.

FEATURES of our standard assemblies kennels include:

- Polished type 304 stainless steel for easy clean cleaning
- AISI 304 UNI EN 1.4301 Certification
- Unique One-Handed Positive Lift Latch for easy access
- Easy assembly
- 'Slam action' locks allow doors to be closed easily, even when handling a patient

FOSCHI 4-PLACE STAINLESS STEEL CAGE



FEATURES

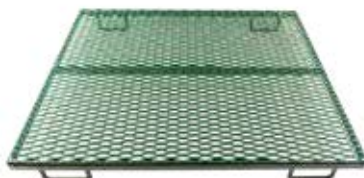
This standard assembly 4-place kennel is composed:

- TOP ROW: 2 modules (W=61, D=70, H=61 cm)
- BOTTOM ROW: 1 module with divider plate (W= 122, D=70, H=92 cm)
- Mobile stainless steel base with wheels (H=20 cm)
- Total dimensions, including mobile base and wheels: W=122, D=77, H=173 cm.



Accessories on request (not included)

Code	Description
00005320	Grill floor, coated in PVC, for module A1S (1 pc)
00707702	Grill floor, coated in PVC, for module C2+D (2 pcs)



FOSCHI 5-PLACE STAINLESS STEEL CAGE

A1S A1S A1S



CODE
00005309



FEATURES

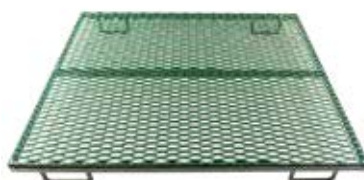
This standard assembly 5-place kennel is composed:

- TOP ROW: 3 modules (W=61, D=70, H=61 cm)
- BOTTOM ROW: 1 module with divider plate (W=183, D=70, H=92 cm)
- Mobile stainless steel base with wheels (H=20 cm)
- Total dimensions, including mobile base and wheels: W=183, D=77, H=173 cm.



Accessories on request (not included)

Code	Description
00005320	Grill floor, coated in PVC, for module A1S (1 pc)
00710395	Grill floor, coated in PVC, for module D2+D (2 pcs)



A3

C2



CODE
00005377



FEATURES

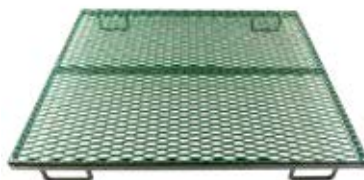
This standard assembly 5-place kennel is composed:

- TOP ROW: 1 module, with 2 dividers (W=127, D=70, H=61 cm)
- BOTTOM ROW: 1 module, with 1 divider (W=127, D=70, H=95)
- Mobile stainless steel base with wheels (H=20 cm)
- Total dimensions, including mobile base and wheels: W=127, D=77, H=176 cm.



Accessories on request (not included)

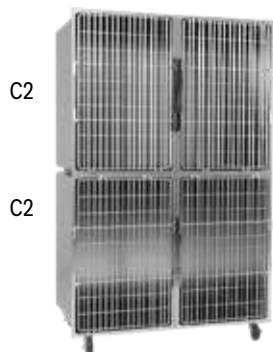
Code	Description
00707701	Grill floor, coated in PVC, for module A3+D (3 pcs)
00707702	Grill floor, coated in PVC, for module C2+D (2 pcs)



OTHER STANDARD ASSEMBLIES ON REQUEST

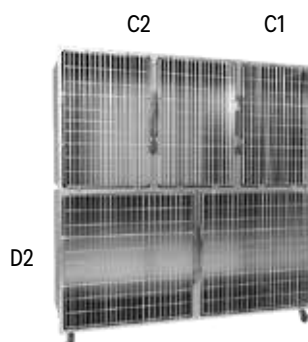


**CUSTOMIZED
DESIGN
CONSULTANCY**



4-PLACE (C2/C2)
Total dimensions:
W=127, D=77, H=203 cm

CODE
00005625



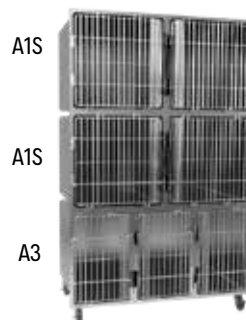
5-PLACE (C2-C1/D2)
Total dimensions:
W=190, D=77, H=203 cm

CODE
00005850



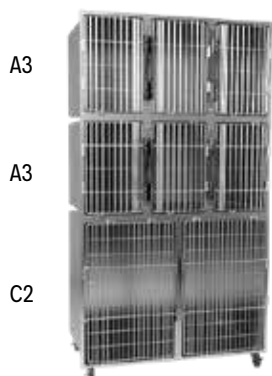
6-PLACE (A1Sx2/A1Sx2 /A1Sx2)
Total dimensions:
W=127, D=77, H=203 cm

CODE
00005623



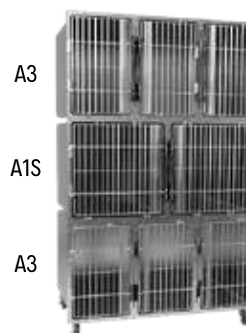
7-PLACE (A1Sx2/A1Sx2/
A3+D)
Total dimensions:
W=127, D=77, H=193 cm

CODE
00005621



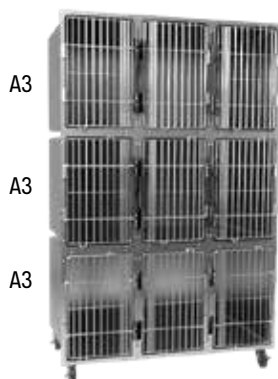
8-PLACE (A3+D/A3+D/
C2+D)
Total dimensions:
W=127, D=77, H=228 cm

CODE
00005628



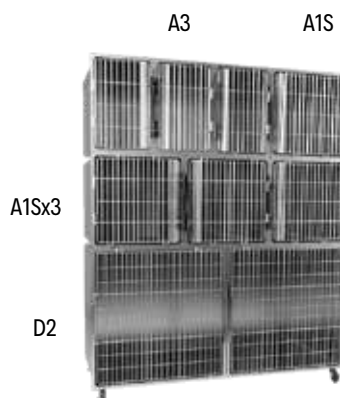
8-PLACE (A3+D/A1Sx2/A3+D)
Total dimensions:
W=127, D=77, H=193 cm

CODE
00005620



9-PLACE (A3+D/A3+D/A3+D)
Total dimensions:
W=127, D=77, H=193 cm

CODE
00005622



9-PLACE (A3+D-A1S/
A1Sx3/D2+D)
Total dimensions:
W=190, D=77, H=238

CODE
00005400

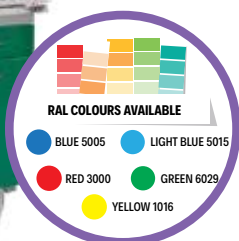
FOSCHI 5-PLACE STAINLESS STEEL CAGE ON CABINET



FEATURES

- TOP ROW: 1 module, 2 dividers
- BOTTOM ROW: 2 modules
- CABINET: laminate cabinet with 2 drawers, 2 doors
- Total dimensions: W=127, D=77, H=216 cm

CODE
00005523



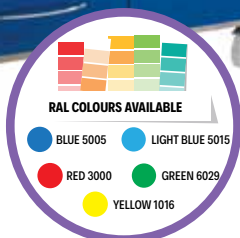
FOSCHI 2-PLACE STAINLESS STEEL CAGE ON CABINET



FEATURES

- TOP ROW: 2 modules
- CABINET: laminate cabinet with 4 drawers, 1 door.
- Total dimensions: W=127, D=77, H=156 cm.

CODE
00005524



Mobile Oxygen Unit

CODE
00721580

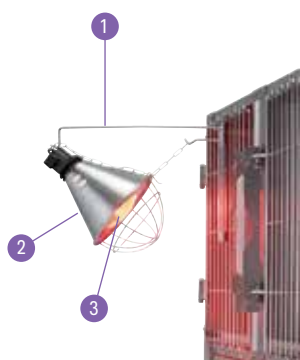


This single unit on wheels features our Oxygen Therapy door that helps provide additional oxygen to support patients in need. The castor wheels allow mobility and moving the patient without stress. The O2 door is in Plexiglass and provides a low-stress method of O2 delivery.

Total dimensions: W=94, D=60, H=92 cm



STAINLESS STEEL CAGES ACCESSORIES



LUX LAMP-HOLDER

Code	Description
00711619	Stainless steel pole for heating lamp LUX (Fig. 1)
00677004	Aluminum reflector for heating lamp LUX with 5 mt cable (Fig. 2)
00691001	Infrared heating bulb 150 W (Fig. 3)
00691002	Infrared heating bulb 250 W (Fig. 3)

LUX CLAMP-ON IV POLE



Entirely made of stainless steel, easily clamps on to the cage door and is adjustable in height.

CODE
00711618



RECORD HOLDER

Entirely made of stainless steel, hooks easily to cage door for holding patient's records.

CODE
00572103

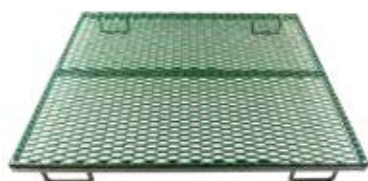


OXYGEN THERAPY DOOR

Made of clear polycarbonate for unobstructed patient view.

Code	Description
00721821	Oxygen therapy door H=60 cm; fits module A1S
00005632	Oxygen therapy door H=60 cm; fits module A3+D
00005875	Oxygen therapy door H=95 cm; fits module C1
00721823	Oxygen therapy door H=95 cm; fits module C2+D
00005633	Oxygen therapy door H=95 cm; fits module D2+D

COATED CAGE FLOORS



Code	Description
00005320	Grill floor, coated in PVC, for module A1S (1 pc)
00707701	Grill floor, coated in PVC, for module A3+D (3 pcs)
00710394	Grill floor, coated in PVC, for module C1 (1 pc)
00707702	Grill floor, coated in PVC, for module C2+D (2 pcs)
00710395	Grill floor, coated in PVC, for module D2+D (2 pcs)

PVC CAGES

These cages are made out of molded polyethylene. The doors and the mobile base are made out of the highest quality stainless steel. They represent a highly cost-effective solution for animal housing. The PVC is corrosion-resistant and guarantees easy sanitation and durability.

4-PLACE PVC CAGE



CODE
00705099



FEATURES

- Thickness 8 mm
- TOP ROW: 2 modules (W=65, D=74, H=83,5 cm)
- BOTTOM ROW: 1 module (W=131, D=74, H=84 cm)
- Mobile stainless steel base with wheels (H=20 cm)
- Total dimensions, including mobile base and wheels: W=131, D=80, H=180 cm



Accessories on request (not included)

	Code	Description
2x	00707699	Stainless steel grill floor, PVC coated, for top/bottom single modules
	00700001	Stainless steel grill floor, PVC coated, for bottom right (module with divider)
	00700003	Stainless steel grill floor, PVC coated, for bottom left (module with divider)
	00710031	Stainless steel collecting container, for top/bottom single modules
	00700002	Stainless steel collecting container, for bottom right (module with divider)
	2x 00700004	Stainless steel collecting container, for bottom left (module with divider)



6-PLACE PVC CAGE



CODE
00705100



FEATURES

- Thickness 8 mm
- TOP ROW: 3 modules (W=65, D=74, H=83,5 cm)
- BOTTOM ROW: 1 module with divider W=131, D=74, H=84 cm + 1 module W=65, D=74, H=84 cm.
- Mobile stainless steel base with wheels (H=20 cm)
- Total dimensions, including mobile base and wheels: W=196, D=80, H=180 cm



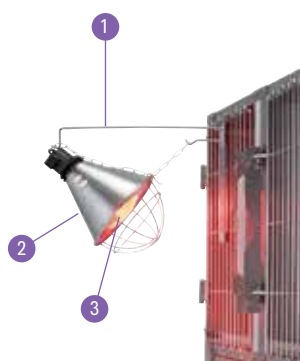
Accessories on request (not included)

	Code	Description
4x	00707699	Stainless steel grill floor, PVC coated, for top/bottom single modules (1 pc)
	00700001	Stainless steel grill floor, PVC coated, for bottom right (module with divider) (1 pc)
	00700003	Stainless steel grill floor, PVC coated, for bottom left (module with divider) (1 pc)
	00710031	00710031 Stainless steel collecting container, for top/bottom single modules (1 pc)
	00700002	Stainless steel collecting container, for bottom right (module with divider) (1 pc)
	00700004	Stainless steel collecting container, for bottom left (module with divider) (1 pc)





PVC CAGES ACCESSORIES



LUX LAMP-HOLDER

Code	Description
00711619	Stainless steel pole for heating lamp LUX (Fig. 1)
00677004	Aluminum reflector for heating lamp LUX with 5 mt cable (Fig. 2)
00691001	Infrared heating bulb 150 W (Fig. 3)
00691002	Infrared heating bulb 250 W (Fig. 3)



RECORD HOLDER

Entirely made of stainless steel, hooks easily to cage door for holding patient's records.

CODE
00572103



LUX CLAMP-ON IV POLE

Entirely made of stainless steel, easily clamps on to the cage door and is adjustable in height.

CODE
00711618



OXYGEN THERAPY DOOR

Made of clear polycarbonate for unobstructed patient view.

CODE
00707221

COATED GRILL FLOORS & COLLECTING CONTAINERS



Code	Description
00707699	Stainless steel grill floor, PVC coated, for top/bottom single modules (1 pc)
00700001	Stainless steel grill floor, PVC coated, for bottom right (module with divider) (1 pc)
00700003	Stainless steel grill floor, PVC coated, for bottom left (module with divider) (1 pc)
00710031	00710031 Stainless steel collecting container, for top/bottom single modules (1 pc)
00700002	Stainless steel collecting container, for bottom right (module with divider) (1 pc)
00700004	Stainless steel collecting container, for bottom left (module with divider) (1 pc)

WALK-IN KENNELS

FOSCHI offers a wide range of walk-in kennel solutions that are designed specifically for you and your patients' needs. A variety of walk-in kennel doors are available from toughened glass, gated, combination of glass and gate and critical care.

Our wealth of experience in designing walk-in kennels and run areas for veterinary Hospitals and clinics allow us to help design the best option for your needs, at all levels.

CONTACT US
TO CONFIGURE YOUR
OWN KENNEL RUN



FOSCHI HYDRAULIC V-TOP SURGICAL TABLE

The V-Top acts as a helper during surgery, keeping the patient in the correct position. Gives you the flexibility to go from straight horizontal and level, to V-Shaped, near vertical positioning without external devices.

FEATURES

- Entirely made out of AISI 304 stainless steel
- Folding adjustable V-Top with 8/10 thickness
- Trendelenburg lifting system, with 2 independent hydraulic pumps
- Drainage system: 2 lateral stainless steel reservoirs that slides out, for easy cleaning
- Attachment rails for accessories, such as cleats
- Foot operated

DIMENSIONS:

- 142 x 55 cm
- Weight: 95 kg
- Adjustable height: from 90 to 110 cm
- Max weight: 100 kg

CODE
00572076



ACCESSORIES ON REQUEST (not included)

Code	Description
00711827	Quick release cam cleat tie-down attachments (1 pc)
00711828	Cam cleat tie-down attachment with 12 mm ø hole (1 pc)
00711829	Stainless steel instrument tray (40x30) with support pole, 35 x 35 cm. (1 pc)
00911830	Stainless steel bridge support (1 pc)
00000336	Removable grid with collection basin for dental procedures



Collection basin



Foot pedal



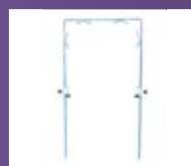
Hydraulic block



Quick release cam cleat tie-down attachments



Cam cleat tie-down attachment with 12 mm ø hole



Stainless steel bridge support



Instrument Tray



Dental Collection Basin

STAINLESS STEEL ELECTRIC SURGICAL TABLE (TO-140)

The FOSCHI TO-140 V-Top Table features two stainless steel table panels for positioning animals in the best position during all procedures. It also features an easy to clean removable gutter with a drain.

The table tops tilt from level to 35° via one-hand control. The table top and V-panels are counterbalanced for easier positioning of the patient.



FEATURES

- Adjustable top panels: 0 – 35° “V”
- Top panels open completely for thorough and easy cleaning
- Bidirectional tilt mechanism: 15° (gutter side) and 30° (other side)
- Entirely made of AISI 304 stainless steel
- Foot operated for hands-free height adjustment (78 to 108 cm)
- Weight capacity 180 kg
- Tabletop dimensions (in cm): W=145 x D=56



CODE
00712277



ACCESSORIES ON REQUEST (not included)



Quick release cam cleat tie-down attachments



Cam cleat tie-down attachment with 12 mm ø hole



Instrument Tray

FOSCHI EXAMINATION FLAT-TOP TABLE



FEATURES

- Entirely made out of AISI 304 stainless steel
- Stainless steel exam top is 130 x 60 cm, with raised edges to prevent fluid run-off
- Hands free height adjustment from 27 to 105 cm high
- Foot switch engages a quiet, electric actuator system that lifts up to 100 kg smoothly



CODE
00005219

WITH SCALE

- Incorporated scale
- Weighing capacity up to 150 kg
- Weighing precision: 50 gr

CODE
00711857



CONSULTING STAINLESS STEEL TABLE



FEATURES

- Entirely made out of AISI 304 stainless steel
- Lateral reservoir for fluid collection
- Adjustable feet

DIMENSIONS:

W=130 x D=60 x H=89 cm

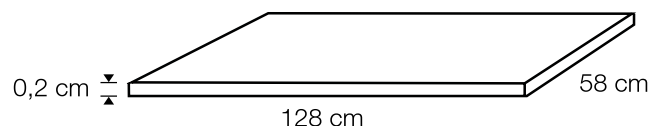


FOSCHI ARTHANE® TABLE MAT

The Arthane® Table Mat by Foschi is a high-quality exam table mat designed to stabilize pets on exam tables and other clinic surfaces leading to a more stress-free veterinary visit. This Mat is specifically designed for use in animal hospitals by making it non-slip, easy to clean, and highly durable to withstand the wear and tear from animals, while maintaining a balance of softness to ensure comfort for pets.

BENEFITS

- Reduces stress and anxiety for pets by providing a better surface grip
- Easy to disinfect by wiping the surface or handwashing
- Non-skid padded bottom layer secures and stabilizes mat onto surfaces
- Protection of the table from scratches



CONSULTING STAINLESS STEEL TABLE WITH WHEELS



FEATURES

- Entirely made out of AISI 304 stainless steel
- Lateral reservoir for fluid collection
- 4 lockable swivel castors

DIMENSIONS:

W=130 x D=60 x H=89 cm





FOLD UP STAINLESS STEEL EXAM TABLES

Fold up to use, fold down to store. Entirely made out of AISI 304 stainless steel. Wall mounted. Flat sheet top. Working load 25kg (can vary, dependent on wall type and fixings used).

DIMENSIONS:

W=58 x D=100 x H=102 cm

Wall-mounted side: W=58 cm



Storage position



CODE
00554020



Storage position



DIMENSIONS:

W=100 x D=58 cm

Wall-mounted side: 100 cm

CODE
00721261

FOSCHI STAINLESS STEEL TUB TABLE

Entirely made out of AISI 304 stainless steel, this multi-purpose table features a stainless steel sink with a removable stainless steel grill and a mixer tap (hot/cold) with extractable shower. This table provides you with flexibility for all of your daily surgical procedures and dental services, as well as your other daily needs.

INCLUDED

- The stainless steel grill, mixer tap and extractable shower are included

DIMENSIONS:

W=140 x D=70 x H=86 cm



ACCESSORIES ON REQUEST

Code	Description
00000370	Removable solid stainless steel top (turns the wet table into a consulting table)

FOSCHI TUB TABLE WITH CABINET

Entirely made out of AISI 304 stainless steel, this multi-purpose table features a stainless steel sink with a removable stainless steel grill, a mixer tap (hot/cold) with extractable shower and a choice of cabinet styles. The tub has knee space for added convenience and comfort during dental or other procedures.



INCLUDED

- The stainless steel grill, mixer tap and extractable shower are included.

DIMENSIONS:

W=140 x D=70 x H=93 cm

CODE	COLOR
20005878	green ●
20005877	blue ●
20005876	white ○
20006662	red ●



SURGEON'S SCRUB SINKS

SINGLE SURGEON'S SCRUB SINK



FEATURES

Durable AISI 304 stainless steel construction.

The sink includes:

- Single lever faucet with mixer tap (hot/cold)
- 1 soap dispenser (stainless steel)
- 1 brush dispenser (stainless steel)

DIMENSIONS:

W = 80 cm



ON REQUEST
YOU CAN ADD THE
AUTOMATIC SENSOR
FOR ALL OUR SCRUB
SINKS! CALL US KNOW
FOR MORE INFO.

DOUBLE SURGEON'S SCRUB SINK



FEATURES

Durable AISI 304 stainless steel construction.

The sink includes:

- 2 single lever faucets with mixer tap (hot/cold)
- 1 soap dispenser (stainless steel)
- 1 brush dispenser (stainless steel)

DIMENSIONS:

W = 130 cm



ON REQUEST
YOU CAN ADD THE
AUTOMATIC SENSOR
FOR ALL OUR SCRUB
SINKS! CALL US KNOW
FOR MORE INFO.

KNEE OPERATED SURGEONS SCRUB SINK



Wall mounted, durable AISI 304 stainless steel construction, the sink is knee operated and has a Gooseneck Swivel Sink Faucet. Ready to be installed.



FOSCHI SERVING TROLLEY

with non-toxic ABS (Acrylonitrile butadiene styrene) top



DIMENSIONS:

W=60 x D=30 cm



FOSCHI MAYO SERVING TROLLEY

Entirely made of stainless steel, this best-selling trolley is a perfect aid in daily tasks and procedures. Easy to clean, this trolley with wheels features an extractable raising top to provide additional mobile workspace throughout your facility. The foot break on the wheel allows to control movement easily. Height of the top is adjustable manually.



FOSCHI BRIDGE SERVING TROLLEY

This trolley is designed to be easy to clean, easy to transport and durable. The height is adjustable manually and the **top is completely removable**. 4 swivel wheels, 2 with breaks. Base is chrome-plated steel and the removable tray is stainless steel.

DIMENSIONS:

W=76 x D=42 x H=90-140 cm.



INOX STRETCHER ON WHEELS

This multi-function mobile stretcher solves your transport issues, especially for injured and post-op animals. The top is removable and becomes a stretcher with handles. It has 4 swivel wheels, 2 with breaks.

DIMENSIONS:

W=130 x D=50 x H=83 cm

CODE
00554029



MOBILE STRETCHER

Allows easy transport of any dog or other small animal, for emergencies, recovery, or other pet-care situation. Made of washable, durable, PVC and an aluminum frame, the stretcher features 2 rear wheels for dragging and 2 velcro easy-adjusting body straps.

DIMENSIONS:

W=120 x D=50 cm.

CODE
00844209



FOLDING STRETCHER

The stretcher is constructed of easy-to-clean and durable, reinforced PVC and aluminum frame. The PVC cloth measures 100 x 50 cm when open. When folded, the stretcher measures 63 x 13 cm width, so storage is no problem.

CODE
00705063

DIMENSIONS:

W=120 x D=52 x H=80 cm.



MOBILE STRETCHER WITH WHEELS

This transport stretcher has a totally removable gurney top in reinforced PVC, with easy-adjusting body straps. The steering handles at both ends aid when turning sharp corners and maneuvering in tight spaces. The large casters make it even more nimble, and they lock securely when it needs to be parked. 4 swivel wheels, 2 with breaks.

DIMENSIONS:

W=120 x D=52 x H=80 cm

CODE
20005496



ANAESTHESIA STAND

Structure made of stainless steel. This trolley accommodates the flow meter and has two bottle cradles complete with chains. It has 4 anti-static wheels, including 2 braked. On the back side of the trolley there is room for the cylinders.

DIMENSIONS:

W=41 x D=70 x H=153 cm

CODE
00707055



ANAESTHESIA STAND WITH TRAY

Stainless steel construction and 3 trays (for the oxygen concentrator, for the patient monitor and for the ventilator). The stand features two bottle cradles complete with chains, 4 anti-static wheels, including 2 braked.

DIMENSIONS:

W=41 x D=70 x H=153 cm

CODE
00707004



ANAESTHESIA STAND ON TROLLEY

Stainless steel construction with 2 stainless steel trays and a cabinet with 2 drawers.

DIMENSIONS:

W=54 x D=53 x H=152 cm



CODE
00707559

TROLLEY

FOSCHI's new Clinical Veterinary Carts series offers features that are unparalleled in the veterinary mobile storage market. These tough, durable carts are designed to meet the demands you have today and make change easy **as your needs change**. A modular cart system means universal sizes and easily interchangeable drawers and accessories.

Procedure/supply cart, utility cart, med/surg supply cart, linen storage cart—a variety of cart bodies and a wide selection of modular, lightweight, interchangeable interior **FEATURES** and accessories make it **easy to create the cart you need**.

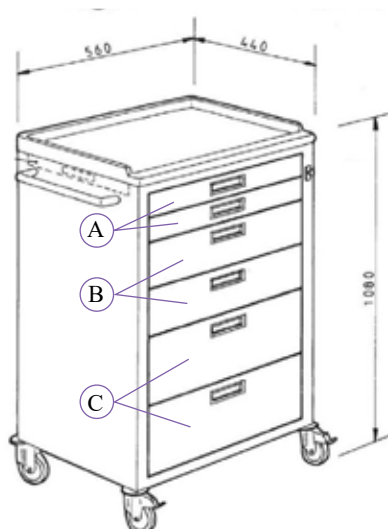
Designed for heavy use, our carts are made of **highly durable, impact-resistant plastic with color integrated**, so there is no color chipping, fading, denting, or rusting, even if surfaces are scratched.

Our flexible and adaptable solution expands your storage and transport capabilities, saves you time and money, and **improves efficiency and productivity!**

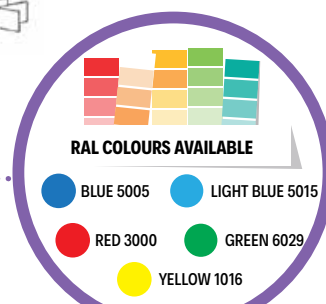


ARTIDE**Emergency Trolley**

CODE
60230005

**Technical Design****Drawer dividers**

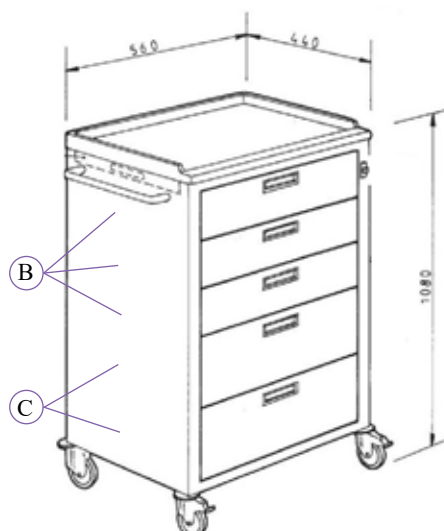
60220096	Organizer for small drawer (A)
60220093	Organizer for medium drawer (B)
60220090	Organizer for tall drawer (C)



CUSTOMIZABLE in other colors
Choose yours on the site
www.colorirai.it

EUROPA**Clinical Trolley**

CODE
60230008

**Technical Design****Drawer dividers**

60220093	Organizer for medium drawer (B)
60220090	Organizer for tall drawer (C)



AFRICA

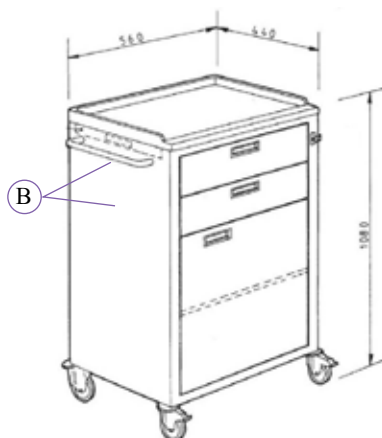
Clinical Trolley



CODE
60230012



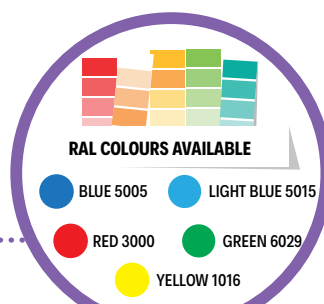
Technical Design



Drawer dividers



60220093 Organizer for medium drawer (B)



CUSTOMIZABLE in other colors
Choose yours on the site
www.coloriral.it

AMERICA

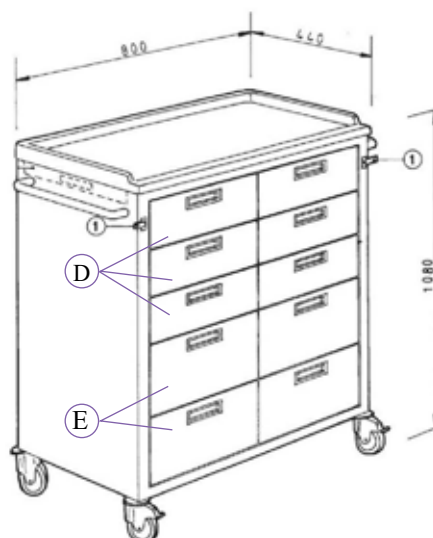
Clinical Trolley



CODE
60230002



Technical Design



Drawer dividers



60220094 Organizer for medium-narrow drawer (D)

60220091 Organizer for tall-narrow drawer (E)

OCEANIA

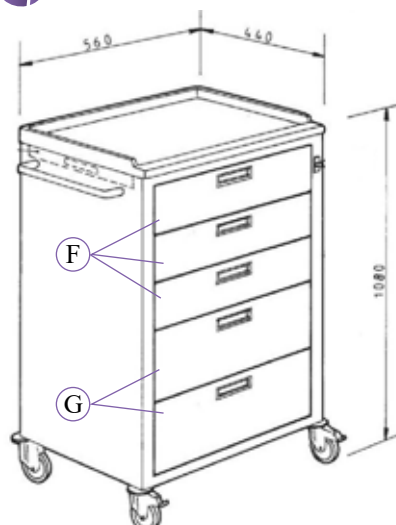
Clinical Trolley



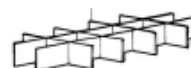
CODE
60230016



Technical Design



Drawer dividers



60220095 Organizer for medium-wide drawer (F)

60220092 Organizer for tall-wide drawer (G)



RAL COLOURS AVAILABLE

- BLUE 5005 ● LIGHT BLUE 5015
- RED 3000 ● GREEN 6029
- YELLOW 1016

CUSTOMIZABLE in other colors
Choose yours on the site
www.coloriral.it

ASIA

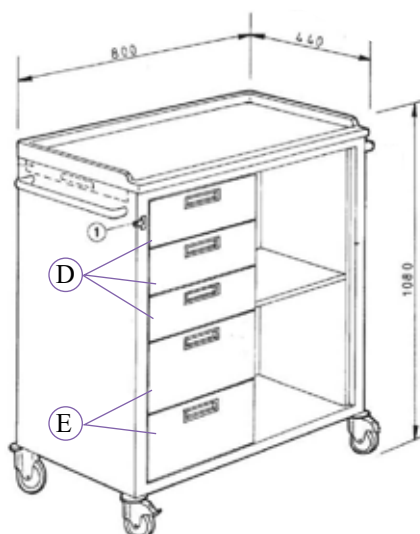
Clinical Trolley



CODE
60230021



Technical Design



Drawer dividers

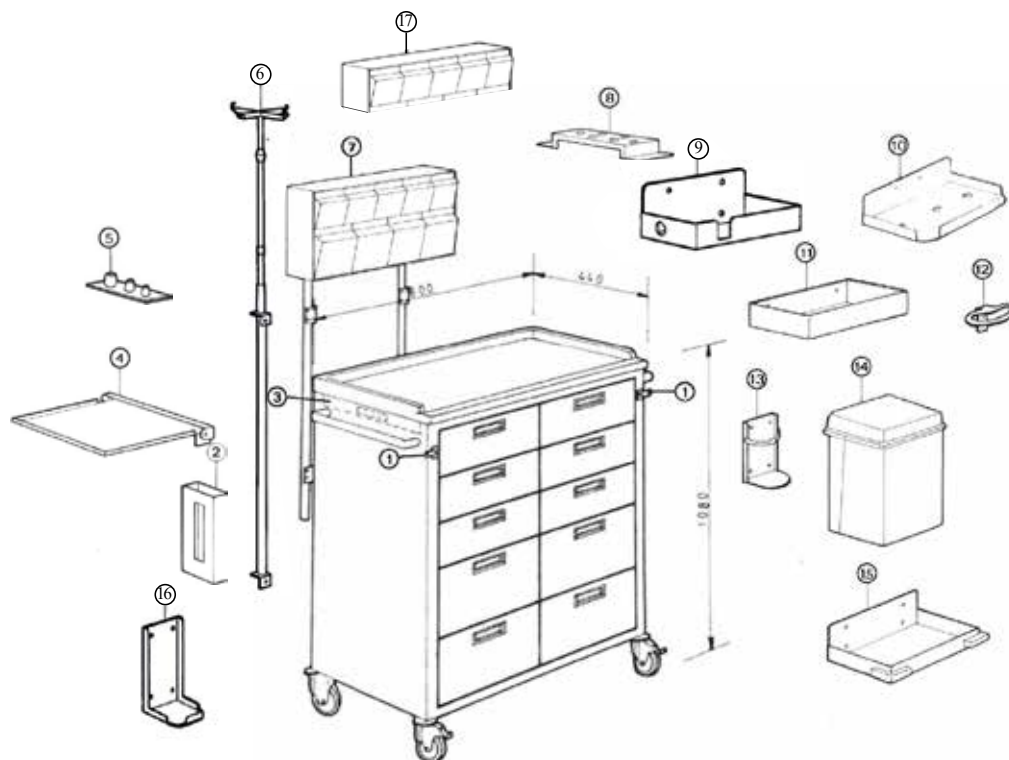


60220094 Organizer for medium-narrow drawer (D)

60220091 Organizer for tall-narrow drawer (E)

CART ACCESSORIES

60220001	Centralized locking Fig. 1
60220018	Catheter tubes/holder Fig.2
60220076	Pull out side tray Fig.3
60220011	Reclinable top Fig.4
60220086	Dispenser for cups in abs Fig.5
60220083	Steel iv pole Fig.6
60220082	Bridge with 2 rows of tipping boxes (5 top + 4 bottom) Fig.7
60220013	Vial holder Fig.8
60220020	Support for aspirator Fig.9
60220079	Support for disinfection basin Fig.10
60220080	Vertical tray Fig.11
60220100	Support for kidney dish Fig.12
60220014	Sharps bin holder Fig.13
60220089	Knee operated waste bin Fig.14
60220003	Support for 20 lt hazardous medical wastes carton Fig.15
60220016	Support for oxygen bottle Fig.16
60220081	Bridge single row of 5 tipping boxes Fig.17



When your needs change, just exchange the FEATURES to create new functionality.

MULTI 640

This multi-purpose medical cart features 4 drawers and a tank holder in the back. It is made of paint-coated metal and non-toxic ABS (Acrylonitrile butadiene styrene). The tray is manually adjustable in height and direction.



CODE
00005129

MULTI 620

This multi-purpose medical cart features 1 door and 1 drawer and a tank holder in the back. It is made of paint-coated metal and non-toxic ABS (Acrylonitrile butadiene styrene). The tray is manually adjustable in height and direction.



CODE
00005404

SHUTTER DOOR BASKET CABINETS

Our FOSCHI medical cabinet range offers the best solution for all your practice's needs.

All cabinets include ISO medical basket modules that are interchangeable and are on castors for easy mobility. All models are available with have lockable **shutter doors** or **glass doors**.

Ideal for the storing of medical consumables and equipment, these cabinets are easy to maneuver and push, even when fully loaded. Operation is self-evident, and it's easy for staff to add, remove, and change baskets.

FEATURES

- ISO 3394 baskets made of non-toxic, easy-to-clean, ABS (Acrylonitrile butadiene styrene) baskets
- Organizers for the baskets make it easy to store and find consumables and equipment
- Two robust handles make it easy to maneuver and push, even when fully loaded

A1 CABINET WITH SHUTTER DOOR

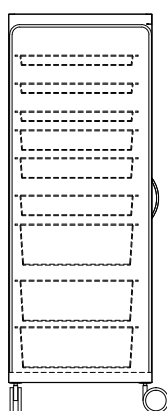
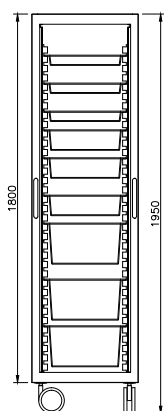
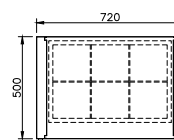
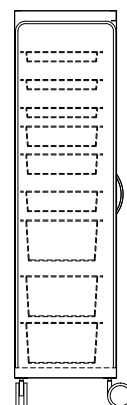
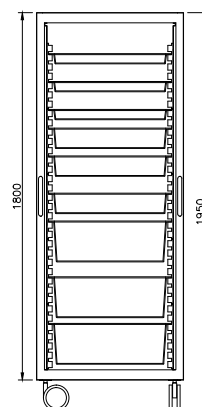
Measures:
W=720 x D=500 x H=1950 cm

CODE
00500094

A1 CABINET WITH GLASS DOORS

Measures:
W=720 x D=500 x H=1950 cm

CODE
00005546



A2 CABINET WITH SHUTTER DOOR

Measures:
W=520 x D=700 x H=1950 cm

CODE
00500091

A2 CABINET WITH GLASS DOORS

Measures:
W=520 x D=700 x H=1950 cm


CODE
00005547

FOSCHI CLINICAL FURNITURE

Made in Italy. These words make every Italian manufacturer proud and FOSCHI is first in line in promoting the excellence of this brand in the world, at an affordable price. Italian products and goods are known and highly appreciated for their top quality, attention to details and innovative design. All these factors are the key success factors of our brand new Clinical Furniture Line, that has been designed to offer hygiene, comfort and design to veterinary health professionals and their patients.

Make it yours. Regardless of the size of your practice or your equipment specification, FOSCHI has the capability to customize a solution tailored to your needs. The look and feel of your environment speaks volumes about your business, and sets the mood when your patients walk through the front door. Our specialists will help you choose the best solution for you, in order to create something that's all you and to make the most out of your investment.

Make it last. Creating a space that's all you, also means having the flexibility to reconfigure down the road as your needs change. FOSCHI's clinical furniture is a modular system that allows you to change from drawers to doors or vice versa. And, if your growing practice leads you to a new location, rest assured: You can take this furniture with you.



It must look beautiful, yet be functional. It must have proper storage – plenty of it – and unique areas to prepare, dispense and sterilize.

Keep everything in its place and you create the pinnacle of efficiency.

FOSCHI: furniture that performs.

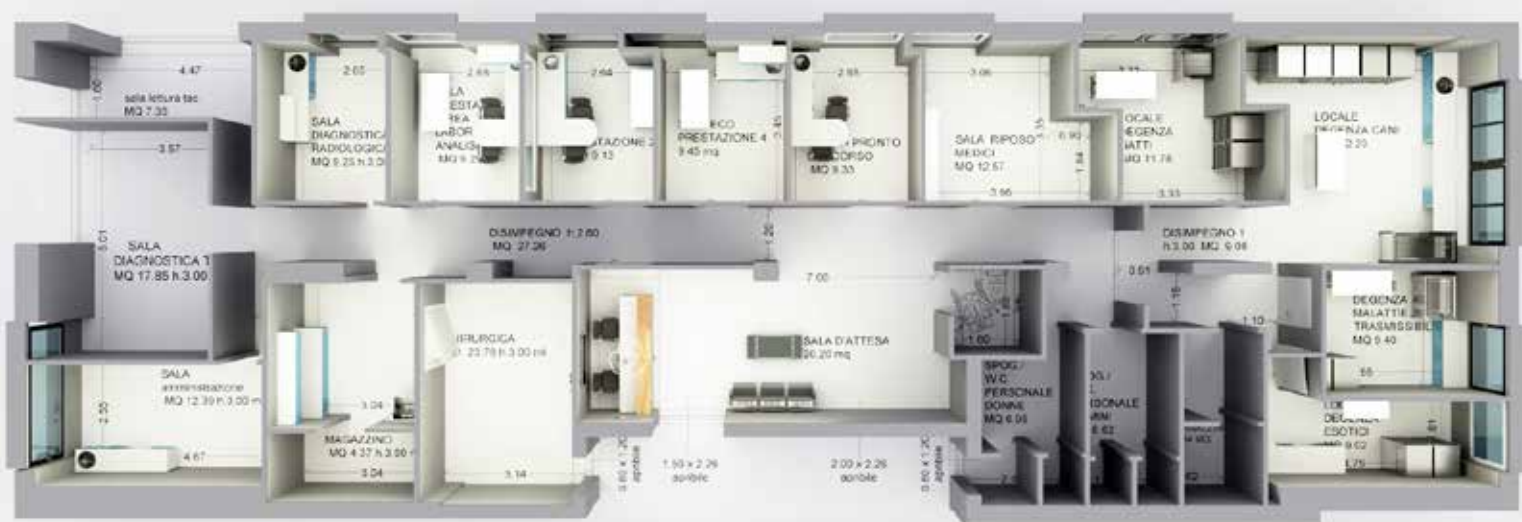
CLINICAL FURNITURE



YOU IMAGINE, WE CREATE

- + SPACE PLANNING
- + CUSTOMIZED SOLUTIONS
- + HANDCRAFTED FINISHES
- + ANALYSIS OF CRITICAL POINTS
- + INNOVATIVE MATERIALS
- + WIDE RANGE OF ITEMS

WITH US YOUR IDEAS COME TRUE



With every project we complete we gain a better insight into what practices need from this important space. Our focus is on creating a great working environment, providing the room you need to attend to patients.

Whether you're looking to renovate a small one consultation room practice or build a new hospital, we can help by working closely with the veterinarians and their team.

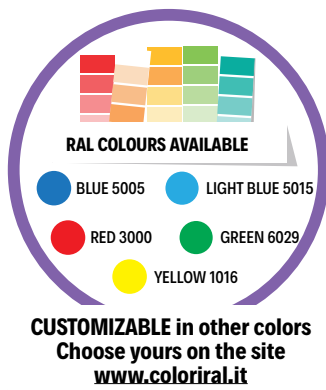
Here are some examples of what we can achieve together.



SIMPLE LINEAR

CODE
00500302

- Dimensions: W= 2000 x D= 500 mm
- Composition of 4 modules (500 mm)
- Colors: the base is white (RAL 9003), while you can choose your favorite color for door and drawers
- Handles: chromed curved handles
- Work top: quartz white laminated work top
- Sink: polycarbonate, white



SIMPLE PLUS

CODE
00710618

- Dimensions: W=2025 x D=1025 x H=500 mm
- Composition of 4 modules (500 mm) + 1 angular module (W=750 x D=500 mm)
- Colors: base is white (RAL 9003), while you can choose your favorite color for door and drawers
- Handles: chromed curved handles
- Worktop: quartz white laminated work top
- Sink: polycarbonate, white



SIMPLE STERIL

CODE
00500303

- Dimensions: W=1500 x D=600
- Bottom Composition of 3 modules (500 mm)
- Wall mounted: 1 cabinet (W=500 mm), with 2 sliding glass doors (W=1000 mm)
- Colors: base is white (RAL 9003), while you can choose your favorite color for door and drawers
- Handles: chromed curved handles
- Worktop: quartz white laminated work top
- Sink: polycarbonate, white











FURNISHINGS

for your Veterinary Clinic



www.foschigroup.com

SIMPLE LINE



FEATURES

- Epoxy-coated metal structure
- Quarz white laminated work top
- Chromed curved handles
- Colors: the base is white (RAL 9003), while you can choose your favorite color for door and drawers

5002SLCabinet, 1 door and 1 adjustable shelf
Code 00712429

W. 50, D. 53, H. 90+3 (top) cm



FEATURES

- Epoxy-coated metal structure
- Quarz white laminated work top
- Chromed curved handles
- Colors: the base is white (RAL 9003), while you can choose your favorite color for door and drawers

5003SLCabinet, 2 doors
Code 00721834

W. 50, D. 53, H. 90+3 (top) cm



FEATURES

- Epoxy-coated metal structure
- Quarz white laminated work top
- Chromed curved handles
- Colors: the base is white (RAL 9003), while you can choose your favorite color for door and drawers

5003SL/CCabinet, 2 big drawers
Code 50030000

W. 50, D. 53, H. 90+3 (top) cm



FEATURES

- Epoxy-coated metal structure
- Quarz white laminated work top
- Chromed curved handles
- Colors: the base is white (RAL 9003), while you can choose your favorite color for door and drawers

5004SLCabinet, 1 door + 1 drawer C
Code 00712805

W. 50, D. 53, H. 90+3 (top) cm



FEATURES

- Epoxy-coated metal structure
- Quarz white laminated work top
- Chromed curved handles
- Colors: the base is white (RAL 9003), while you can choose your favorite color for door and drawers

5006SL

Cabinet, 1 drawer B
+ 1 drawer C + 1 door

Code 0006882



W. 50, D. 53, H. 90+3 (top) cm



FEATURES

- Epoxy-coated metal structure
- Quarz white laminated work top
- Chromed curved handles
- Colors: the base is white (RAL 9003), while you can choose your favorite color for door and drawers

5006SL/C

Cabinet, 1 drawer B
+ 1 drawer C + 1 big drawer

Code 00712819



W. 50, D. 53, H. 90+3 (top) cm



FEATURES

- Epoxy-coated metal structure
- Quarz white laminated work top
- Chromed curved handles
- Colors: the base is white (RAL 9003), while you can choose your favorite color for door and drawers

5008SL

Cabinet, 2 drawers B + 2 drawers C

Code 00712818



W. 50, D. 53, H. 90+3 (top) cm



FEATURES

- Epoxy-coated metal structure
- Quarz white laminated work top
- Chromed curved handles
- Colors: the base is white (RAL 9003), while you can choose your favorite color for door and drawers

5010SL

Cabinet, 1 drawer A + 3 drawers C

Code 0007826



W. 50, D. 53, H. 90+3 (top) cm



FEATURES

- Epoxy-coated metal structure
- Quarz white laminated work top
- Chromed curved handles
- Colors: the base is white (RAL 9003), while you can choose your favorite color for door and drawers

5014SL

Cabinet, 2 drawers A
+ 1 drawer B + 2 drawers C

Code 00007827



W. 50, D. 53, H. 90+3 (top) cm



FEATURES

- Epoxy-coated metal structure
- Quarz white laminated work top
- Chromed curved handles
- Colors: the base is white (RAL 9003), while you can choose your favorite color for door and drawers

5016SL

Cabinet, 1 drawer A
+ 3 drawers B + 1 drawer C

Code 00007828



W. 50, D. 53, H. 90+3 (top) cm



FEATURES

- Epoxy-coated metal structure
- Quarz white laminated work top
- Chromed curved handles
- Colors: the base is white (RAL 9003), while you can choose your favorite color for door and drawers

5018SL

Cabinet, 5 drawers B

Code 00006086



W. 50, D. 53, H. 90+3 (top) cm



FEATURES

- Epoxy-coated metal structure
- Quarz white laminated work top
- Chromed curved handles
- Colors: the base is white (RAL 9003), while you can choose your favorite color for door and drawers

5022SL

Cabinet, 2 drawers A + 4 drawers B

Code 00007829



W. 50, D. 53, H. 90+3 (top) cm



FEATURES

- Epoxy-coated metal structure
- Quarz white laminated work top
- Colors: the base is white (RAL 9003), while you can choose your favorite color for door and drawers

5053SL/I

Sink cabinet with stainless steel basin, mixer tap, 1 door with knee opening and waste bin

Code 00721675



W. 50, D. 53, H. 90+3 (top) cm



FEATURES

- Epoxy-coated metal structure
- Quarz white laminated work top
- Chromed curved handles
- Colors: the base is white (RAL 9003), while you can choose your favorite color for door and drawers

5054SL/I

Sink cabinet with stainless steel basin, mixer tap, 1 door and waste bin

Code 00721848



W. 50, D. 53, H. 90+3 (top) cm



FEATURES

- Epoxy-coated metal structure
- Quarz white laminated work top
- Chromed curved handles
- Colors: the base is white (RAL 9003), while you can choose your favorite color for door and drawers

5075SL

Cabinet with refrigerator

Code 00000136



W. 50, D. 53, H. 90+3 (top) cm



FEATURES

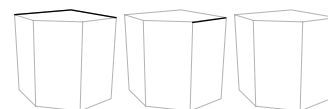
- Epoxy-coated metal structure
- Quarz white laminated work top
- Chromed curved handles
- Colors: the base is white (RAL 9003), while you can choose your favorite color for door and drawers

5060SL

Corner cabinet, 1 door and

1 adjustable shelf

Code 00005293



W. 77x77, D. 53, H. 90+3 (top) cm



FEATURES

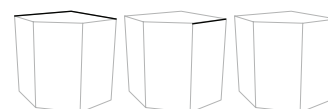
- Epoxy-coated metal structure
- Quarz white laminated work top
- Chromed curved handles
- Colors: the base is white (RAL 9003), while you can choose your favorite color for door and drawers

5062SL/I

Corner sink cabinet with stainless steel basin, mixer tap,

1 door and waste bin

Code 00006047



W. 77x77, D. 53, H. 90+3 (top) cm



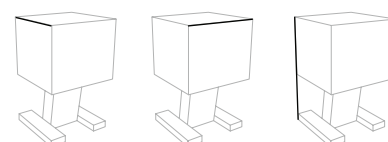
FEATURES

- Epoxy-coated metal structure
- Chromed curved handles
- Colors: the base is white (RAL 9003), while you can choose your favorite color for door and drawers

6506SL

Service unit on castors, 3 drawers B

Code 00007836



W. 50, D. 50 cm, H. 83 cm



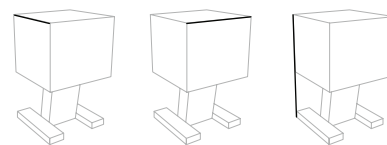
FEATURES

- Epoxy-coated metal structure
- Chromed curved handles
- Colors: the base is white (RAL 9003), while you can choose your favorite color for door and drawers

6508SL

Service unit on castors, 3 drawers B

Code 65080000



W. 50, D. 50 cm, H. 83 cm



FEATURES

- Epoxy-coated metal structure
- Chromed curved handles
- Colors: the base is white (RAL 9003), while you can choose your favorite color for door and drawers

6010SL

Service unit on castors,
2 drawers B + 2 drawers C

Code 00721676



W. 50, D. 50 cm, H. 75 cm



FEATURES

- Epoxy-coated metal structure
- Chromed curved handles
- Colors: the base is white (RAL 9003), while you can choose your favorite color for door and drawers

6011SL

Service unit on castors,
1 drawer A + 3 drawers C

Code 00007906



W. 50, D. 50 cm, H. 75 cm



FEATURES

- Epoxy-coated metal structure
- Chromed curved handles
- Colors: the base is white (RAL 9003), while you can choose your favorite color for door and drawers

6012SL

Service unit on castors,
2 drawers A + 1 drawer B + 2 drawers C

Code 00007907



W. 50, D. 50 cm, H. 75 cm



FEATURES

- Epoxy-coated metal structure
- Chromed curved handles
- Colors: the base is white (RAL 9003), while you can choose your favorite color for door and drawers

6013SL

Service unit on castors,
1 drawer A + 3 drawers B + 1 drawer C

Code 00007908



W. 50, D. 50 cm, H. 75 cm



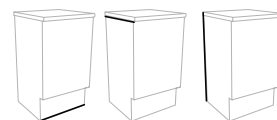
FEATURES

- Epoxy-coated metal structure
- Chromed curved handles
- Colors: the base is white (RAL 9003), while you can choose your favorite color for door and drawers

6014SL

Service unit on castors, 5 drawers B

Code 60140000



W. 50, D. 50 cm, H. 75 cm



FEATURES

- Epoxy-coated metal structure
- Chromed curved handles
- Colors: the base is white (RAL 9003), while you can choose your favorite color for door and drawers

6015SL

Service unit on castors,
2 drawers A + 4 drawers B

Code 00007909



W. 50, D. 50 cm, H. 75 cm



FEATURES

- Epoxy-coated metal structure
- Transparent glass shelves
- Colors: the base is white (RAL 9003)

0022/BIS

Open hanging unit,
2 adjustable shelves

Code 00711822



W. 50, D. 35 cm, H. 54 cm



FEATURES

- Epoxy-coated metal structure
- Transparent glass shelves
- Colors: the base is white (RAL 9003)

0049

Hanging unit, 1 glass door
and 2 adjustable shelves

Code 49000000



W. 50, D. 35 cm, H. 54 cm



FEATURES

- Epoxy-coated metal structure
- Chromed curved handles
- Colors: the base is white (RAL 9003), while you can choose your favorite color for door and drawers

0022

Hanging unit, 1 door
and 2 adjustable shelves

Code 00721850



W. 50, D. 35 cm, H. 54 cm



FEATURES

- Epoxy-coated metal structure
- Transparent glass shelves
- Colors: the base is white (RAL 9003)

0023

Open hanging unit,
2 adjustable shelves

Code 00244901



W. 100, D. 35, H. 54 cm



FEATURES

- Epoxy-coated metal structure
- Transparent glass shelves
- Etched or transparent glass sliding doors
- Colors: the base is white (RAL 9003)

0023/BIS

Hanging unit, 2 sliding glass doors
and 2 adjustable shelves

Code 00000551



W. 100, D. 35, H. 54 cm



FEATURES

- Epoxy-coated metal structure
- Chromed curved handles
- Colors: the base is white (RAL 9003), while you can choose your favorite color for door and drawers

0048

Hanging unit, 2 doors
and 2 adjustable shelves

Code 48000000



W. 100, D. 35, H. 54 cm



FEATURES

- Epoxy-coated metal structure
- Quarz white laminated work top
- Chromed curved handles
- Colors: the base is white (RAL 9003), while you can choose your favorite color for door and drawers

5006SL/BIS

Single cabinet, 1 drawer B,
1 drawer C + 1 big drawer

Code 00007903



W. 93.5, D. 53, H. 90+3 (top) cm



FEATURES

- Epoxy-coated metal structure
- Quarz white laminated work top
- Chromed curved handles
- Colors: the base is white (RAL 9003), while you can choose your favorite color for door and drawers

5008SL/BIS

Single cabinet,
2 drawers B + 2 drawers C

Code 00007904



W. 93.5, D. 53, H. 90+3 (top) cm



FEATURES

- Epoxy-coated metal structure
- Quarz white laminated work top
- Chromed curved handles
- Colors: the base is white (RAL 9003), while you can choose your favorite color for door and drawers

5002SL/BIS

Single cabinet,
2 cabinet doors

Code 00007905



W. 93.5, D. 53, H. 90+3 (top) cm



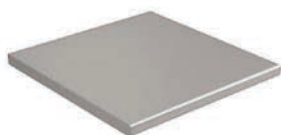
TOP

**FEATURES**

- Water-repellent white laminate worktop
- Thickness 3 cm
- This is the standard top provided with the clinical furniture, but it is possible to ask for a Krion or Steel worktop instead upon order (codes below).

7002SL**Code 00721849****FEATURES**

- Krion worktop
- Thickness 1,2 cm

7002/K500**Code 00000682****ON REQUEST****FEATURES**

- Steel worktop

**ON REQUEST**

HANDLES

**FEATURES**

- Anodized aluminum handle

3105**Code 00007933****FEATURES**

- Die-cast zamak handle

3130**Code 00007934****FEATURES**

- Die-cast zamak handle

3165**Code 00007935****FEATURES**

- Die-cast zamak handle

3960**Code 00007936**

ACCESSORIES FOR POLYCARBONATE DRAWERS



7050

Plastic insert
1 partition, low
Code 70500000

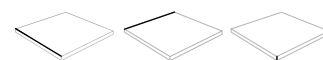


W. 43, D. 37 cm, H. 3,5 cm



7051

Plastic insert
1 partition, high
Code 70510000



W. 43, D. 37 cm, H. 7,5 cm



7052

Plastic insert
2 partitions, low
Code 70520000

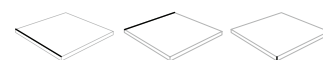


W. 43, D. 37 cm, H. 3,5 cm



7053

Plastic insert
2 partitions, high
Code 70530000



W. 43, D. 37 cm, H. 7,5 cm



7054

Plastic insert
3 partitions, low
Code 70540000

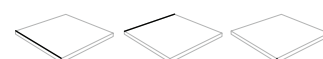


W. 43, D. 37 cm, H. 3,5 cm



7055

Plastic insert 3
partitions, high
Code 70550000



W. 43, D. 37 cm, H. 7,5 cm



7057

Plastic insert
4 partitions, low
Code 70570000

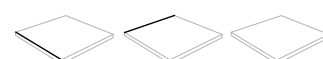


W. 43, D. 37 cm, H. 3,5 cm



7058

Plastic insert
4 partitions, high
Code 70570000



W. 43, D. 37 cm, H. 7,5 cm

CUSTOMIZATIONS

All modules can be customized in a wide range of colors and are available with feet (picture 1) or with end panel (picture 2)

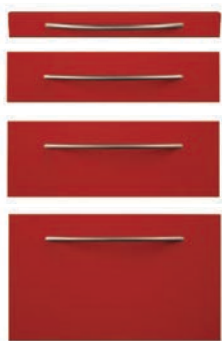
(picture 1)



(picture 2)



Drawers size

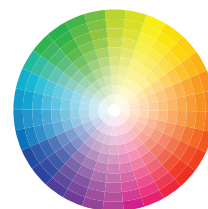


Drawer A: h. 57 mm

Drawer B: h. 117 mm

Drawer C: h. 177 mm

Big drawer: h. 295 mm



CUSTOMIZABLE in other colors
Choose yours on the site
www.coloriral.it





**Always by Your Side,
to Treat Animals. *Differently.***



Veterinary Solutions



WHY EUROVETS?



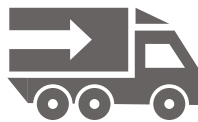
IMPORTER

Source and import the highest quality products to meet the needs of veterinary, equine and camel markets across the GCC region.



SEMINARS AND CPD EVENTS

Continuing professional development (CPD) seminars and events deliver relevant, practical knowledge for veterinarians and healthcare professionals.



LOGISTICS, FLEET AND DISTRIBUTION

Temperature-controlled vehicle fleet and state-of-the-art inventory management system.



FACILITIES

Fully certified,
Temperature-controlled warehouses.



BRAND MANAGEMENT & MARKETING

Digital & traditional marketing support for the brands and products we represent.



AFTERMARKET SOFTWARE AND SUPPORT

In-house technical field support team provides onsite installation, staff training, equipment maintenance and software updates.

Eurovets YOUR complete veterinary Supply and Support SOLUTION.



Copyright © 2020

Eurovets Veterinary Medicines LLC

All right reserved

CONTACT US:

Tel: +971 4 434 2436

E-mail: orders@eurovetsworld.com

Address: Warehouse A6, Dubai Science Park, Dubailand,
Al Barsha South, Dubai, United Arab Emirates

For online orders visit:
eurovets.ae



eurovetsworld.com